

Role of dipolar interactions in a system of Ni nanoparticles studied by magnetic susceptibility measurements

S. H. Masunaga and R. F. Jardim*

Instituto de Física, Universidade de São Paulo, CP 66318, 05315-970 São Paulo, SP, Brazil

P. F. P. Fichtner

Escola de Engenharia, UFRGS, 91501-970 Porto Alegre, RS, Brazil

J. Rivas

Departamento de Física Aplicada, Universidade de Santiago de Compostela, Campus Universitario, 15706 Santiago de Compostela, Spain

(Received 6 July 2009; revised manuscript received 25 September 2009; published 30 November 2009)

The role of dipolar interactions among Ni nanoparticles (NPs) embedded in an amorphous SiO₂/C matrix with different concentrations has been studied performing ac magnetic susceptibility χ_{ac} measurements. For very diluted samples, with Ni concentrations <4 wt % Ni or very weak dipolar interactions, the data are well described by the Néel-Arrhenius law. Increasing Ni concentration to values up to 12.8 wt % Ni results in changes in the Néel-Arrhenius behavior, the dipolar interactions become important, and need to be considered to describe the magnetic response of the NPs system. We have found no evidence of a spin-glasslike behavior in our Ni NP systems even when dipolar interactions are clearly present.

DOI: [10.1103/PhysRevB.80.184428](https://doi.org/10.1103/PhysRevB.80.184428)

PACS number(s): 75.47.Lx, 75.50.Kj, 71.30.+h

I. INTRODUCTION

A particle of a ferromagnetic (FM) material is believed to be more stable when consisting of only one magnetic domain, provided that its size is below a certain critical value.¹ The critical radius R_C of ordinary FM nanoparticles (NPs) have been estimated to be in the range of 10–1000 nm,² a value calculated to be ~ 30 nm for nickel Ni.³ Ni is a prototype of FM material but when it is reduced below its critical size R_C , thermal agitation will lead to a superparamagnetic (SPM) state instead of stable magnetization.

The reversion of the magnetic moment of an isolated single-domain particle with volume V and anisotropy constant K over a uniaxial anisotropy energy barrier E_a is characterized by the Néel-Arrhenius relaxation time,⁴

$$\tau^N = \tau_0^N \exp\left[\frac{E_a^N}{k_B T}\right], \quad (1)$$

where τ_0^N in the range of 10^{-12} – 10^{-9} s is a characteristic attempt time for FM NPs, k_B is the Boltzmann constant, and $E_a^N = KV$. In a system comprised of fine particles, with a distribution of particle size and various sources of anisotropy, V is replaced by a mean value $\langle V \rangle$ and the activation energy is then related to an effective anisotropy constant K_{eff} . For observation times τ_{obs} much longer than the relaxation time τ ($\tau_{obs} \gg \tau$), the magnetic moments $\vec{\mu}$ of the NPs reach the thermal equilibrium, characterizing the SPM behavior. On the other hand, for $\tau_{obs} \ll \tau$, the $\vec{\mu}$ are blocked by the energy barrier, a state corresponding to a stable magnetization below a certain blocking temperature T_B , which is defined for $\tau_{obs} = \tau$.

The dipole-dipole interaction is always present in systems comprised of magnetic NPs and can be only considered the most relevant interaction provided that the agglomeration of NPs is absent and that they are stabilized within an isolated

matrix or separated by a surfactant.⁵ Due to the $\sim 10^3 \mu_B$ order of the magnetic moment of the NPs, the magnitude of the dipolar interaction becomes appreciable so the manifestation of its effect is easily observed in ordinary magnetic characterizations.⁵ For lightly diluted samples, the noninteracting case is treated as a good approximation. However, even for very diluted samples, the interaction strength can reach units or tens of kelvins, becoming a relevant part of the total energy of the system. A rough estimate of the temperature T_0^{Eq} related to the dipolar interaction strength between two NPs is given by the relationship⁶

$$T_0^{Eq} = \frac{\langle \mu \rangle^2}{k_B r^3} = \frac{M_S^2 \langle V \rangle}{k_B} x_V, \quad (2)$$

where $\langle \mu \rangle$ is the mean magnetic moment of a log-normal distributed system, r is the average interparticle distance assuming a regular arrangement of particles in the sample, x_V is the volume concentration of particles, $\langle V \rangle$ is the mean particle volume, M_S is the saturation magnetization, and k_B is the Boltzmann constant.

Equation (1) has been used frequently and accounts for the magnetic properties of ensembles of noninteracting particle systems.⁷ However, when the concentration of NPs increases, the energy barrier is modified by the magnetic interaction between granules. Under this circumstance, the Vogel-Fulcher law,

$$\tau^V = \tau_0^V \exp\left[\frac{E_a^V}{k_B(T - T_0^V)}\right], \quad (3)$$

where T_0^V is the strength of interparticle dipolar interaction, is useful to describe the magnetic properties of systems with weak magnetic interactions, provided that $T_B \gg T_0^V$.⁸ The same approach is also used for describing the magnetic properties of spin-glass systems, where T_0 is now understood as

the ideal glass temperature for real glasses.⁹ Although the Vogel-Fulcher approach has been used for different systems, the frequency $f=1/\tau$ sensitivity between the blocking temperature $T_B(f)$ in SPM systems and the freezing temperature $T_f(f)$ in spin glasses is quite different in nature.¹⁰

Separating the contribution of the dipolar interaction in systems with increasing particle concentration constitutes a difficult task. This is mainly due to the intricate details in producing samples with different concentrations of NPs without changing their size distributions appreciably. Increasing the particle size usually lead to an increase in the dipolar interaction while different sizes introduce size effects.¹⁰

We discuss here the ac magnetic susceptibility χ_{ac} data at zero applied dc magnetic field of five samples with different concentrations of Ni NPs. Even though we have already studied systems similar to the ones discussed here, roughly determining a dipolar energy added to the barrier energy by comparing only two samples with different Ni concentrations and average radius,^{11,12} the sample preparation method has been improved and we have synthesized Ni NPs in a larger range of concentration. Furthermore, we discuss the results of χ_{ac} in samples with similar radius $R \sim 2.5 \text{ nm} \ll R_C$ and width of particle distribution, providing a systematic study of the magnetic dynamics of Ni NPs. Mostly due to the very small ac applied magnetic field used in all measurements, $H_{ex}=1 \text{ Oe}$, only a slight modification is caused to the barrier energy. Therefore the relaxation time τ in the absence of magnetic field has been used as a good approximation.¹⁰ The combination of these characteristics has allowed us to systematic study the effect of dipolar interaction on the magnetic properties of these Ni NPs. Moreover, by studying the frequency sensitivity of the peak temperature in χ_{ac} curves we were able to assure that spin-glasslike behavior is absent in our Ni NPs systems.

II. EXPERIMENTAL PROCEDURE

Ni nanoparticles embedded in an amorphous matrix, which is composed of SiO_2 and $\text{C}(\text{SiO}_2/\text{C})$, were prepared through a method in which silicon oxianions and the metal cation (Ni) are immobilized within a polymeric matrix based on polyester. Initially, citric acid was dissolved in ethanol and tetraethyl orthosilicate $[\text{Si}(\text{OC}_2\text{H}_5)_4, 98\%]$. Nickel (II) nitrate hexahydrate $[\text{Ni}(\text{NO}_3)_2 \cdot 6\text{H}_2\text{O}, 99.9985\%]$ was added to the latter mixture and mixed for homogenization. Ethylene glycol was thus added to promote the polymerizing reaction when the solution is heated up to $80 \text{ }^\circ\text{C}$. The resulted solid resin was heat treated at $300 \text{ }^\circ\text{C}$ for 3 h, ground in ball mill, and then pyrolyzed in N_2 atmosphere at $500 \text{ }^\circ\text{C}$. The pyrolysis of the precursor resulted in a CO/CO_2 rich atmosphere, which together with the N_2 flux, promote the reduction in the Ni citrate. Further details of method employed for producing the samples are described elsewhere.¹³ The Ni content of the samples ($x=1.9, 2.7, 4.0, 7.9, \text{ and } 12.8 \text{ wt } \%$ Ni) was determined by inductively coupled plasma-atomic emission spectrometry (ICP-AES).

X-ray powder-diffraction (XRD) patterns were taken using a D8 Advance Bruker-ASX diffractometer with $\text{Cu } K\alpha$

radiation. A 2θ angular scan range between 20° and 80° was made in all samples with 2θ accuracy of $\sim 0.05^\circ$ at room temperature. The XRD diagrams indicated that all samples are single phase and comprised of crystalline fcc Ni and an amorphous phase related to the SiO_2/C matrix.

The size distribution and the morphology of the Ni NPs were studied by transmission electron microscopy (TEM) on two microscopes: (i) JEOL JEM-2010 operating at 200 kV and (ii) Philips CM-12, operating at 120 kV. Measurements of the ac magnetic susceptibility $\chi_{ac}=\chi'+i\chi''$ were performed in powder samples by using two Quantum Design apparatuses: a superconducting quantum interference device magnetometer and a physical property measurement system. The measurements were performed under zero dc magnetic field, an excitation field of 1 Oe, and driving frequencies varying over five decades, or more appropriately, from 0.033 to 9999 Hz.

III. RESULTS AND DISCUSSION

All the five samples containing Ni concentrations $x=1.9, 2.7, 4.0, 7.9, \text{ and } 12.8 \text{ wt } \%$ Ni were synthesized by the above-mentioned method. TEM analyses were performed in the series to confirm the presence of Ni NPs and to determine their size distribution. Typical images from the TEM investigation for the samples studied, accompanied by their histograms, are displayed in Fig. 1. The histograms were constructed by counting over 1400 Ni NPs spread out on different regions of the TEM grid and considering a log-normal distribution. The images from TEM investigation indicate that the Ni NPs are homogeneously distributed within the amorphous SiO_2/C matrix, with no sign of agglomeration, and have nearly spherical shape. For example, the relevant size parameters of the sample with 4.0 wt % Ni were a mean diameter of $\langle d \rangle = 5.0 \text{ nm}$, a median diameter $d_0 = 4.9 \text{ nm}$, and a size distribution width of $\sigma_d = 0.24$, as estimated by the log-normal distribution function. In addition to this, as displayed in Table I, all samples have quite similar average diameter and size-distribution width. The average distance r between NPs is believed to decrease with increasing Ni concentration therefore increasing the coupling between particle magnetic moments. We have found that r , estimated from the Ni concentration in the samples and in excellent agreement with the ones extracted from the TEM images, roughly varies from 14 nm for the most concentrated sample (12.8%) to 21 nm for the most diluted one (1.9%), as displayed in Table I. The latter value of $r=21 \text{ nm}$ is essentially the same when compared to the one of the sample with 2.7 wt % Ni due to the small difference in the average radius of the samples. In any event, these features are important for studying the role of the dipolar interactions in this series, as discussed below.

The temperature dependence of both the real χ' and imaginary χ'' components of the ac magnetic susceptibility for two selected samples, 1.9 and 12.8 wt % Ni or more appropriately the most diluted and the most concentrated one, respectively, are shown in Fig. 2. Some features of interest in these curves are: (i) the occurrence of a frequency-dependence rounded maximum at T'_m and T''_m on both χ' and

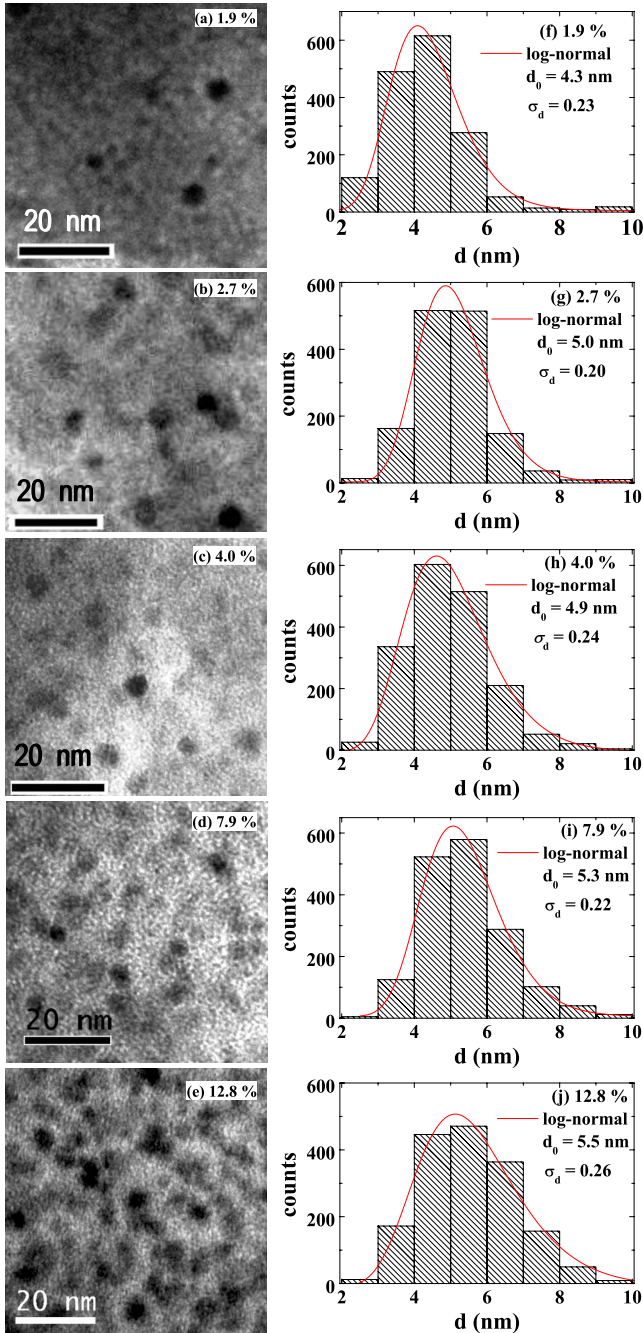


FIG. 1. (Color online) [(a)–(e)] TEM images of the samples with 1.9, 2.7, 4.0, 7.9, and 12.8 wt % Ni. The images show nearly spherical Ni NPs with uniform sizes. [(f)–(j)] Histograms of the NP size distributions for the correspondent samples determined from TEM images. Solid lines are the fittings by using a log-normal distribution.

χ' components, respectively; (ii) increasing f results in a shift of both T'_m and T''_m to higher temperatures; (iii) χ' is frequency independent at high temperatures $T \gg T'_m$, indicating a SPM behavior of the Ni NPs (Refs. 10 and 14); and (iv) a frequency-dependent behavior of χ' for $T \leq T'_m$ signaling the blocking process of the Ni NPs.¹⁰ We notice that at very low frequency (~ 0.033 Hz), the χ' component of χ_{ac} peaks at $T'_m \sim 12$ K and $T''_m \sim 36$ K for samples with 1.9 and

TABLE I. Median NP diameter d_0 , width σ_d , mean value $\langle d \rangle$, and average interparticle distance r extracted from TEM analysis.

ICP-AES		TEM		
x (wt % Ni)	r (nm)	d_0 (nm)	σ_d	$\langle d \rangle$ (nm)
1.9	21	4.3	0.23	4.4
2.7	21	5.0	0.20	5.1
4.0	18	4.9	0.24	5.0
7.9	16	5.3	0.22	5.4
12.8	14	5.5	0.26	5.7

12.8 wt % Ni, respectively. We have observed a similar trend in ac magnetic susceptibility curves for other samples, that exhibited peaks at $T'_m \sim 15, 16,$ and 23 K, for Ni content of 2.7, 4.0, and 7.9 wt %, respectively. We also mention that T'_m increases with increasing Ni content for a certain fixed frequency and a similar behavior has been found for the T''_m dependence, as seen in the plots of Fig. 3. Therefore, both peaks in χ_{ac} data shift to higher temperatures with x , signaling the effect of interparticle (dipolar) interactions throughout the series.

As mentioned above, the observed frequency-dependent behavior in the χ_{ac} data may, in principle, be attributed to (i) the blocking process of superparamagnetism arising from isolated, noninteracting, and weak-interacting NPs (Refs. 15 and 16); (ii) intraparticle spin-glasslike behavior due to the reduced size of the NPs and surface disorder;¹⁷ or (iii) collective spin-glass behavior, which is caused by strong dipolar interparticle interactions and randomness.¹⁷ As few experimental methods are able to distinguish between the paramagnetic to spin-glass transition and the superparamagnetic to spin-glass transition, we further discuss our findings in the χ_{ac} data. Thus, from several curves similar to the ones displayed in Fig. 2, we have computed pairs of (T''_m, f) for the construction of $\ln(\tau)$ vs $1/T''_m$ curves for the five samples studied, as shown in Fig. 3. We mention here that a similar

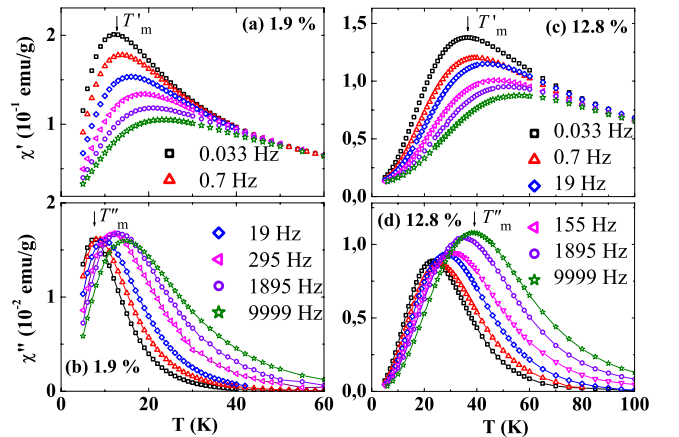


FIG. 2. (Color online) Temperature dependence of the ac magnetic susceptibility for samples with 1.9 and 12.8 wt % Ni. Real (a) and (c) and imaginary (b) and (d) parts of the ac magnetic susceptibility at some selected frequencies are indicated in the figure.

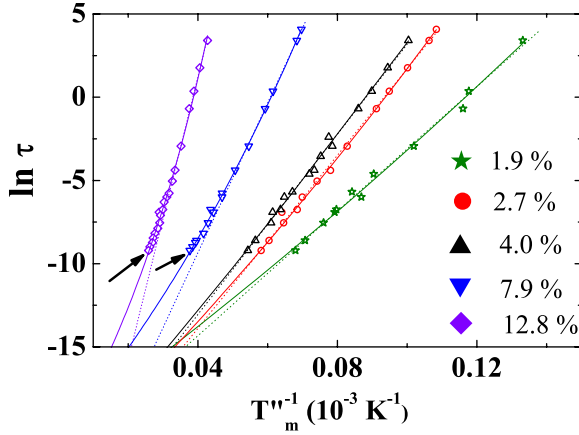


FIG. 3. (Color online) Classical plots of $\ln(\tau)$ vs $1/T_m''$ for samples with 1.9, 2.7, 4.0, 7.9, and 12.8 wt % Ni. Dotted lines are fitted to the Néel-Arrhenius law given by Eq. (1) and arrows indicate a clear deviation of the fitting in the limit of high frequencies. Solid lines represent the best fit of the Vogel-Fulcher law given by Eq. (3).

behavior has been found when the temperature maximum T_m'' is replaced by T_m' in curves of Fig. 3. The attempt time τ_0^N [see Fig. 4(a)] and the effective magnetic anisotropy $K_{eff}^N = (E_a^N / \langle V \rangle)$ obtained from the linear fittings by using the Néel-Arrhenius law of Eq. (1) are listed in Table II. They show that increasing x results in a decrease in τ_0^N , as displayed in Fig. 4(a), and a smooth increase in K_{eff}^N (see Table II), indicating a progressive strengthening of the interaction between granules with x .

The increase in the dipolar interactions with x manifests itself in a clear deviation of the linear fit in the curves of samples with 7.9 and 12.8 wt % Ni at very high frequencies, in a similar fashion as observed in systems with high content of maghemite and Fe NPs.^{7,16} The values of K_{eff}^N for the three less concentrated samples, inferred from data shown in Table II, are similar ($\sim 5.5 \times 10^5$ erg/cm³) and in excellent agreement with $K_{eff} \sim 4.5 \times 10^5$ erg/cm³ expected for Ni NPs in Ref. 18. However, for the two more concentrated samples, the values of K_{eff}^N are higher and reached $\sim 12 \times 10^5$ erg/cm³, for the most concentrated specimen. Such a value of K_{eff}^N is much higher than the one of the bulk Ni, $K_1 = -8 \times 10^5$ erg/cm³ (Ref. 12) but may be attributed, in principle, to the magnetic contribution of a disordered spin surface layer of the Ni NPs. On the other hand, the attempted time $\tau_0^N = 5.8 \times 10^{-15}$ s for the most concentrated sample 12.8 wt % Ni has an unphysical small value, further indicating that a simple Néel-Arrhenius law is not adequate to describe the dynamical properties in samples with higher Ni content. In addition, when the interparticle interaction is non-negligible, a collective state may occur provided that the system has a large distribution of particle size and randomly distributed magnetic NPs.²

Increasing concentration of the magnetic material may lead to a collective behavior of the magnetic NPs. Such a process, that differs from the individual blocked ones, can result in a thermodynamic phase transition, as frequently discussed in spin-glass systems.^{2,6,9,16} In order to test the hypothesis that all samples studied here can be classified as

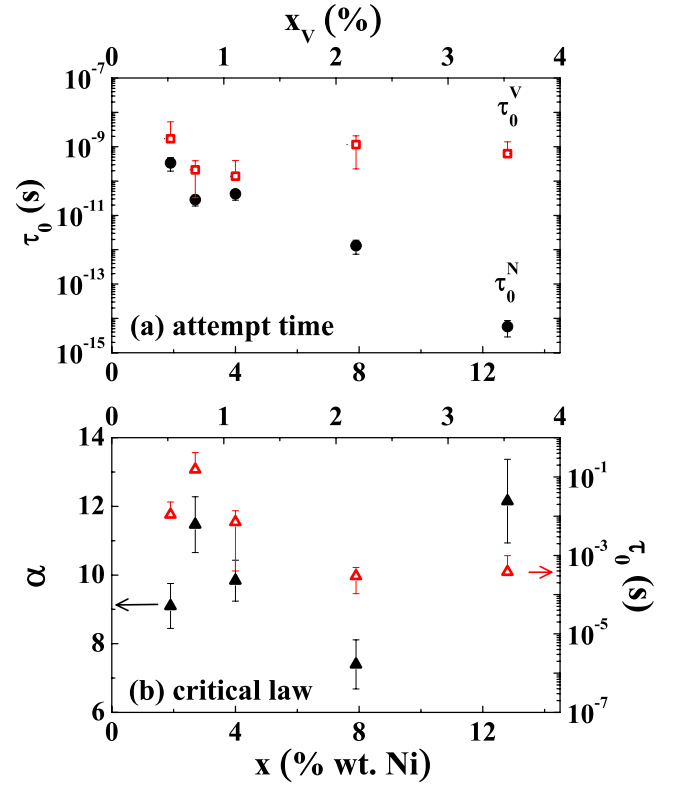


FIG. 4. (Color online) (a) Attempt time obtained by fitting the data displayed in Fig. 3 to the Néel-Arrhenius law, τ_0^N (closed circles), and to the Vogel-Fulcher law, τ_0^V (open squares) as a function of the Ni NP concentration. (b) Dynamical exponent α (closed triangles) and attempt time τ_0 (open triangles) as a function of the Ni NP concentration, obtained from the fittings of the critical law given by Eq. (5). The volume concentration x_V as well as the weight concentration x dependence of all parameters are displayed in the bottom and top axes, respectively. The error bars are also indicated.

SPM systems, a criterion, which is model independent, can be used.¹⁰ It relates the relative shift of the temperature of the maximum in χ'' , T_m'' , with the measured frequency f as

$$\Phi = \frac{\Delta T_m''}{T_m'' \Delta \log(f)}, \quad (4)$$

where $\Delta T_m''$ is the relative variance of T_m'' per decade frequency $\Delta \log(f)$. In spin-glass systems the variation in the freezing temperature $T_f \sim T_m''$ with τ is believed to be very small and therefore $\Phi < 0.05$. On the other hand, SPM systems exhibit large values of Φ , between 0.10 and 0.13 for noninteracting NPs, and 0.05 and 0.13 for interacting ones.¹⁰ The values of Φ obtained in our Ni NPs, evaluated from the χ_{ac} data taken near 50 Hz, are displayed in Table II. The results indicate that Φ varies significantly with increasing x being 0.13 for the most diluted specimen (1.9 wt % Ni), decreases with increasing Ni content, and assumes a value of 0.08 for the most concentrated sample (12.8 wt % Ni). At first glance, the results strongly indicate that changes in T_m'' when τ is varied are much larger than those expected for spin-glass systems. However, to reject the hypothesis of a spin-glasslike state below $T_m'' \sim T_f$ in our samples, a spin-

TABLE II. Values of Φ evaluated at $f \sim 50$ Hz accompanied by the fitted parameters of both the Néel-Arrhenius and the critical law given by Eq. (5) for the series studied.

Sample		Néel-Arrhenius		Critical law		
x (wt % Ni)	Φ	τ_0^N (s)	K_{eff}^N ^a	τ_0 (10^{-3} s)	T_g (K)	α
1.9	0.13	3.4×10^{-10}	5.9 ± 1.2	1.1×10^{-2}	8.7 ± 0.5	9.1
2.7	0.11	2.9×10^{-11}	5.2 ± 0.9	1.5×10^{-1}	9.1 ± 0.6	11.5
4.0	0.12	4.2×10^{-11}	5.7 ± 1.0	7.0×10^{-2}	11.2 ± 0.5	9.8
7.9	0.10	1.3×10^{-12}	7.5 ± 1.3	3.8×10^{-4}	19.3 ± 0.9	7.4
12.8	0.08	5.8×10^{-15}	12.1 ± 1.9	4.0×10^{-4}	26.2 ± 1.7	12.1

^aEffective magnetic anisotropy constant K_{eff}^N in -10^5 erg/cm³.

glass model that predicts a scaling of the T_m'' data by using a critical relaxation time τ must be considered.¹⁹ Such a model predicts a slowing down characteristic of classical spin-glass systems with intermediate to strong interparticle interactions and the relationship between τ , T_m'' , and T_g is given by

$$\tau = \tau_0 \left[\frac{T_m'' - T_g}{T_g} \right]^{-\alpha}, \quad (5)$$

where T_g is the glass transition temperature, τ_0 is the attempt time, and α is the dynamical exponent that varies between 4 and 12 for different spin glasses.¹⁷ This critical law has been successfully applied to test various NPs systems exhibiting spin-glasslike behavior.^{2,16,20} Although the fitting of Eq. (5) to our χ_{ac} data resulted in reasonable values for both T_g and α (listed in Table II), the ones of the pre-exponential τ_0 , displayed in Fig. 4(b) and roughly varying from 4.0×10^{-4} to 1.5×10^{-1} s, are orders of magnitude higher than expected (10^{-10} – 10^{-14} s),²¹ eliminating the hypothesis of a spin-glasslike transition in our samples. Besides, the fitted parameters α and τ_0 appear to be independent of x , as inferred from the data shown in Fig. 4(b).

Returning to the results displayed in Fig. 3 and listed in Table II, one is also leading to conclude that (i) the Néel-Arrhenius law, given by Eq. (1), seems to be inappropriate to describe the results for the more concentrated samples and (ii) that the scenario of classical spin glasses is improper to describe the dynamic properties of this series. The obtained values of the parameters τ_0^N , as displayed in Fig. 4(a), and the effective anisotropy constant K_{eff}^N (see Table II) are essentially Ni content independent in samples with $x=1.9, 2.7$, and 4.0 wt % Ni. On the other hand, these parameters decrease/increase abruptly for the samples with 7.9 and 12.8 wt % Ni, or, in other words, increasing the magnetic interaction results in a clear break down of the applicability of the Néel-Arrhenius law.

To take into account the magnetic interaction between NPs, we have used the Vogel-Fulcher law [Eq. (3)] to fit the same set of the $\ln(\tau)$ vs $1/T_m''$ curves, which are also displayed in the Fig. 3. The resulting fit parameters τ_0^V , K_{eff}^V , and T_0^V are displayed in Table III. The excellent agreement between the fitting result and the experimental data indicates that considering the dipolar interaction between granules is necessary and adequate for describing the dynamical proper-

ties of our samples. The very small values of $T_0^V \sim 1$ K in samples with $1.9, 2.7$, and 4.0 wt % Ni further suggest that the strength of the dipolar interaction is weak in the limit of low Ni concentration (below $x \sim 4$ wt % Ni). This result is expected since the dynamical properties of the NPs were well described by the simple Néel-Arrhenius law (see Table II), indicating that systems in the limit of very weak or negligible dipolar interactions may be described by both laws. Analyzing the data displayed in Table III and Fig. 4(a), we notice that τ_0^V is now independent of x for all the series and assumes values within the expected range 10^{-12} – 10^{-9} s. The difference between the dependence of τ_0^N and τ_0^V with x , obtained from the Néel-Arrhenius and Vogel-Fulcher laws, are clearly seen in Fig. 4(a). A similar feature is observed in the effective anisotropy K_{eff}^V (see Table III), in which values are Ni content x independent, and assumes essentially the same magnitude of the cubic anisotropy constant of bulk Ni ($K_1 = -8 \times 10^5$ erg/cm³).

As displayed in Table III and Fig. 5, similar results for the strength of the dipolar interaction were obtained from the fittings using the Vogel-Fulcher law (T_0^V) and Eq. (2) (T_0^{Eq}). A monotonically increase in T_0^{Eq} with increasing Ni content was obtained and T_0^V seems to be Ni concentration independent, at least for $x < 4$ wt % Ni. For higher Ni concentrations, T_0^V further increases with increasing Ni concentration. Based on these results, one can define a kind of threshold limit value for the Ni concentration in which the dipolar interactions can

 TABLE III. Attempt time τ_0^V , effective anisotropy constant $K_{eff}^V = E_a/V$, and T_0 extracted from the Vogel-Fulcher law (T_0^V). Another estimated values of T_0^{Eq} , obtained by using Eq. (2) with $M_S(0) = 509$ emu/cm³ of bulk Ni, are also displayed.

Sample x (wt % Ni)	Vogel-Fulcher ^a		Eq. (2)	
	τ_0^V (s)	K_{eff}^V (K)	T_0^V	T_0^{Eq} (K)
1.9	1.7×10^{-9}	4.8 ± 1.2	0.9 ± 1.2	0.8 ± 0.1
2.7	2.1×10^{-10}	4.1 ± 0.4	1.3 ± 0.5	1.5 ± 0.2
4.0	1.4×10^{-10}	5.1 ± 1.0	0.8 ± 1.2	2.8 ± 0.4
7.9	1.2×10^{-9}	4.2 ± 0.4	4.1 ± 0.7	5.0 ± 0.6
12.8	6.3×10^{-10}	4.9 ± 0.7	9.4 ± 1.5	8.8 ± 0.9

^aEffective magnetic anisotropy constant K_{eff}^V in -10^5 erg/cm³.

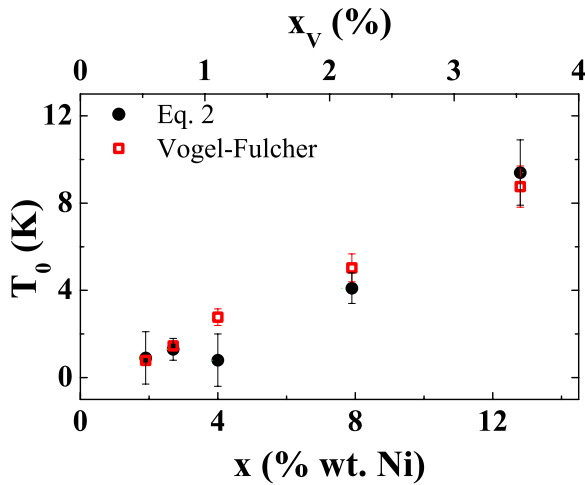


FIG. 5. (Color online) Strength of the dipolar interaction T_0 as a function of the Ni NP concentration. Values of T_0 were obtained from both Eq. (2) (T_0^{Eq} , closed circles) and from the Vogel-Fulcher law (T_0^V , open squares). The volume concentration x_v as well as the weight concentration x dependence of T_0 are displayed in the figure. The error bars are also indicated.

be considered negligibly small. Such a limit was found here to be ~ 4 wt % Ni, in excellent agreement with others found in different systems where, at sufficiently low volume fraction ($x_v < 1\%$),²² the NPs assemblies exhibit ideal SPM behavior and the relaxation is only governed by the thermally activated dynamics of the individual NPs.^{6,20} In addition to this, the strength of the dipolar interactions in samples with $x=7.9$ and 12.8 wt % Ni seems to be not strong enough to lead to a collective spin-glass state. Although all the samples studied here have very low Ni concentrations, in the range of $0.5 \leq x_v \leq 3.5\%$ by volume, the dipolar interaction becomes important to be considered in samples with concentrations higher than 4 wt % Ni (or $x_v > 1\%$). Such a value is frequently found in other magnetic systems considered in the limit of weak interaction.^{2,7,16}

It is important to remark that although the Ni concentration of 4 wt % Ni be a value in which the dipolar interaction can be considered negligibly small, we have seen that the dipolar interparticle interaction is actually present and systematically observed in the magnetic properties throughout the series. We finally mention that the magnetic dynamics in

very diluted Ni NPs discussed here may be of interest for other systems, ranging from artificial spin ice²³ to particulate magnetic carriers in biological tissues,²⁴ where the occurrence and strengthening of the dipolar interactions are important.

IV. CONCLUSION

From the results and discussions made above it is possible to conclude that dipolar interactions throughout nanoparticles modify their magnetic properties. The net result of the increasing dipolar interaction is mirrored in several features of the magnetic system as: (i) unphysical values of the attempting time τ_0 ; (ii) an increase in both T_m' and T_m'' (for a fixed f); (iii) a decrease in the relative variance of both T_m' and T_m'' per decade frequency; (iv) an increase in the anisotropy energy constant as a consequence of an apparent increasing energy barrier; and (v) a clear deviation from linearity in classical Néel-Arrhenius plots of $\ln(\tau)$ vs $1/T_m''$. We have also found that, in the limit of weak dipolar interactions, the Vogel-Fulcher law has been successfully applied to account for the dipolar interactions of an ensemble of Ni NPs with random uniaxial anisotropy and particles volume distribution. From the ac magnetic susceptibility data an upper limit value of ~ 4 wt % Ni has been estimated to be the concentration where dipolar interactions can be neglected. On the other hand, we have also noticed that the effect of increasing dipolar interaction may be seen throughout the series even below this upper limit. Although the characteristics of randomness and polydispersity presented in our samples, features of glassy behavior were not observed probably due to the weak interparticle dipolar interactions between granules.

ACKNOWLEDGMENTS

The authors acknowledge support from the Brazilian agencies Fundação de Amparo à Pesquisa do Estado São Paulo (FAPESP) under Grant No. 2005/53241-9, Conselho Nacional de Desenvolvimento Científico e Tecnológico (CNPq) under Grant No. 473932/2007-5, and Coordenação de Aperfeiçoamento de Pessoal de Nível Superior (CAPES). One of us (R.F.J.) was supported by CNPq under Grant No. 308706/2007-2.

*rjardim@if.usp.br

¹C. Kittel, Rev. Mod. Phys. **21**, 541 (1949).

²S. Bedanta and W. Kleemann, J. Phys. D **42**, 013001 (2009).

³C. Kittell, J. K. Galt, and W. E. Campbell, Phys. Rev. **77**, 725 (1950).

⁴L. Néel, Ann. Geophys. (C.N.R.S.) **5**, 99 (1949).

⁵P. E. Jönsson, Adv. Chem. Phys. **128**, 191 (2003).

⁶T. Jonsson, J. Mattsson, C. Djurberg, F. A. Khan, P. Nordblad, and P. Svedlindh, Phys. Rev. Lett. **75**, 4138 (1995).

⁷J. L. Dormann, F. D'Orazio, F. Lucari, E. Tronc, P. Prené, J. P.

Jolivet, D. Fiorani, R. Cherkaoui, and M. Noguès, Phys. Rev. B **53**, 14291 (1996).

⁸S. Shtrikman and E. P. Wohlfarth, Phys. Lett. **85A**, 467 (1981).

⁹J. L. Tholence, Solid State Commun. **35**, 113 (1980).

¹⁰J. L. Dormann, D. Fiorani, and E. Tronc, Adv. Chem. Phys. **98**, 283 (1997).

¹¹G. F. Goya, F. C. Fonseca, R. F. Jardim, R. Muccillo, N. L. V. Carreño, E. Longo, and E. R. Leite, J. Appl. Phys. **93**, 6531 (2003).

¹²F. C. Fonseca, G. F. Goya, R. F. Jardim, R. Muccillo, N. L. V.

- Carreño, E. Longo, and E. R. Leite, Phys. Rev. B **66**, 104406 (2002).
- ¹³E. R. Leite, N. L. V. Carreño, E. Longo, A. Valentini, and L. F. D. Probst, J. Nanosci. Nanotechnol. **2**, 89 (2002).
- ¹⁴The SPM behavior of the Ni NPs has been confirmed by the data collapse of M/M_S vs H/T curves extracted from several M vs H data taken at temperatures $100 \leq T \leq 350$ K, as discussed in Ref. [12](#).
- ¹⁵L. Néel, Adv. Phys. **4**, 191 (1955).
- ¹⁶J. L. Dormann, L. Bessais, and D. Fiorani, J. Phys.: Condens. Matter **21**, 2015 (1988).
- ¹⁷J. A. Mydosh, *Spin Glasses: An Experimental Introduction* (Taylor & Francis, London, 1993).
- ¹⁸J. I. Gittleman, B. Abeles, and S. Bozowski, Phys. Rev. B **9**, 3891 (1974).
- ¹⁹N. Bontemps, J. Rajchenbach, R. V. Chamberlin, and R. Orbach, Phys. Rev. B **30**, 6514 (1984).
- ²⁰M. F. Hansen, P. E. Jonsson, P. Nordblad, and P. Svedlindh, J. Phys.: Condens. Matter **14**, 4901 (2002).
- ²¹J. Souletie and J. L. Tholence, Phys. Rev. B **32**, 516 (1985).
- ²²C. Binns, K. N. Trohidou, J. Bansmann, S. H. Baker, J. A. Blackman, J.-P. Bucher, D. Kechrakos, A. Kleibert, S. Louch, K.-H. Meiwes-Broer, G. M. Pastor, A. Perez, and Y. Xie, J. Phys. D **38**, R357 (2005).
- ²³R. F. Wang, C. Nisoli, R. S. Freitas, J. Li, W. McConville, B. J. Cooley, M. S. Lund, N. Samarth, C. Leighton, V. H. Crespi, and P. Schiffer, Nature (London) **439**, 303 (2006), and references therein.
- ²⁴A. López, L. Gutiérrez, and F. J. Lázaro, Phys. Med. Biol. **52**, 5043 (2007), and references therein.