



OPEN LETTER

REVISED **To live and age as who we really are: Perspectives from older LGBT+ people in Ireland [version 2; peer review: 3 approved]**

Previously titled: To live and age as who we really are

Lorna Roe ^{1,3}, Miriam Galvin ^{1,4}, Laura Booi ^{1,5}, Lenisa Brandao^{1,6}, Jorge Leon Salas¹, Eimear McGlinchey^{1,7}, Dana Walrath¹¹Global Brain Health Institute, Trinity College Dublin, the University of Dublin, Dublin, Ireland²Centre for Health Policy and Management, Trinity College Dublin, the University of Dublin, Dublin, Ireland³The Irish Longitudinal Study on Ageing, Trinity College Dublin, the University of Dublin, Dublin, Ireland⁴Academic Unit of Neurology, School of Medicine, Trinity College Dublin, the University of Dublin, Dublin, Ireland⁵Discipline of Clinical Medicine, School of Medicine, Trinity College Dublin, the University of Dublin, Dublin, Ireland⁶Department of Health and Human Communication, Psychology Institute, Federal University of Rio Grande do Sul, Porte Alegre, Brazil⁷School of Nursing and Midwifery, Trinity College Dublin, the University of Dublin, Dublin, Ireland**v2** First published: 12 Feb 2020, 3:6
<https://doi.org/10.12688/hrbopenres.12990.1>Latest published: 21 May 2020, 3:6
<https://doi.org/10.12688/hrbopenres.12990.2>**Abstract**

This Open Letter discusses the theme of ‘diversity in brain health’ in research, practice and policy for older LGBT+ people. It is written by a multidisciplinary group of Atlantic Fellows for Equity in Brain Health at the Global Brain Health Institute in Trinity College Dublin (TCD), from a variety of disciplines (health economics, human geography, anthropology, psychology, gerontology) and professions (researcher, clinicians, writers, practicing artists). The group developed a workshop to explore the theme of ‘Diversity and Brain Health’ through the lens of lesbian, gay, bisexual, transgender/transsexual plus (LGBT+). . Guided by two advisors (Prof Agnes Higgins, TCD; Mr Ciaran McKinney, Age and Opportunity), we invited older LGBT+ people and those interested in the topic of LGBT+ and ageing, healthcare providers, policy makers and interested members of the research community. We partnered with colleagues in the School of Law to include socio-legal perspectives. Following the workshop, Roe and Walrath wrote an opinion editorial, published in the *Irish Times* during the 2019 PRIDE festival, and were subsequently invited by HRB Open Research to provide a more detailed expansion of that work. In this Open Letter we describe the theme of ‘diversity and brain health’ and some of the lessons we learned from listening to the lived experience of older LGBT+ people in Ireland today. We illustrate why it’s important to understand the lived experience of older LGBT+ people and highlight the failure of the State to evaluate the experience of LGBT+ people in policy implementation. We call on researchers, clinicians, service planners and policy makers, to recognize and address diversity as an important way to address health inequities in Ireland.

Open Peer Review**Reviewer Status**

	Invited Reviewers		
	1	2	3
version 2 (revision) 21 May 2020	 report	 report	 report
version 1 12 Feb 2020	 report	 report	 report

- Jessica Marsack** , University of Michigan, Ann Arbor, USA
- Caroline Dorsen** , New York University, New York, USA
- Gloria Gutman** , Simon Fraser University, Vancouver, Canada

Any reports and responses or comments on the article can be found at the end of the article.

Keywords

Ageing, diversity, brain health, LGBT+, health inequity



This article is included in the [Ageing Populations](#) collection.

Corresponding author: Lorna Roe (loroe@tcd.ie)

Author roles: **Roe L:** Conceptualization, Project Administration, Writing – Original Draft Preparation, Writing – Review & Editing; **Galvin M:** Conceptualization, Writing – Review & Editing; **Booi L:** Writing – Review & Editing; **Brandao L:** Writing – Review & Editing; **Leon Salas J:** Writing – Review & Editing; **McGlinchey E:** Writing – Review & Editing; **Walrath D:** Conceptualization, Writing – Review & Editing

Competing interests: No competing interests were disclosed.

Grant information: Health Research Board Ireland [ARPP-A-2018-017]. The authors were Atlantic Fellows for Equity in Brain Health at the Global Brain Health Institute (GBHI) and were supported with funding from GBHI.

The funders had no role in study design, data collection and analysis, decision to publish, or preparation of the manuscript.

Copyright: © 2020 Roe L *et al.* This is an open access article distributed under the terms of the [Creative Commons Attribution License](#), which permits unrestricted use, distribution, and reproduction in any medium, provided the original work is properly cited.

How to cite this article: Roe L, Galvin M, Booi L *et al.* **To live and age as who we really are: Perspectives from older LGBT+ people in Ireland [version 2; peer review: 3 approved]** HRB Open Research 2020, 3:6 <https://doi.org/10.12688/hrbopenres.12990.2>

First published: 12 Feb 2020, 3:6 <https://doi.org/10.12688/hrbopenres.12990.1>

REVISED Amendments from Version 1

Following the peer review process a number of minor amendments were made to the text. We updated the article title to make it more specific to the social group examined here. We refined some of the language describing certain social groups, to make the descriptions more easily understood for an international audience (e.g. 'rough sleepers' was changed to 'adults who are homeless'). We reviewed some of the language used to describe LGBT+ people in keeping with international norms (e.g. 'trans-woman' was changed in the text to 'transgender woman'). We illustrated where there may be examples of subconscious and conscious bias. We included some literature referencing the fact that globally not all LGBT+ people are currently safe. Finally, we improved the link between the lessons we learned from LGBT+ people, and the theme of brain health and diversity in our concluding paragraphs.

Any further responses from the reviewers can be found at the end of the article

Disclaimer

The views expressed in this article are those of the author(s). Publication in HRB Open Research does not imply endorsement by the Health Research Board of Ireland.

Introduction

Brain health is described as the ability to remember, learn, plan, concentrate and maintain a clear, active mind by being able to draw on the strengths of your brain such as information management, logic, judgement, perspective and wisdom¹. A healthy brain functions quickly and automatically. But when problems occur, the results can be devastating. Some of the major types of disorders affecting brain health include: neurogenetic diseases (e.g. Huntington's disease), developmental disorders (e.g. autism spectrum disorder), degenerative diseases of adult life (e.g. Parkinson's disease and Alzheimer's disease), metabolic diseases (e.g. Gaucher's disease), cerebrovascular diseases (e.g. stroke and vascular dementia), trauma (e.g. spinal cord and head injury), convulsive disorders (e.g. epilepsy), infectious diseases (e.g. AIDS dementia), and brain tumors².

The Global Brain Health Institute (GBHI) was established to promote equity in brain health, specifically to address the risk and impact of dementia globally. Dementia - an umbrella term for a variety of diseases of the brain which cause cognitive decline and loss of function - is incurable, but, a range of non/pharmacological therapies exist to manage the condition³. Dementia is determined by a complex range of risk factors including genetic (e.g. ApoE e4 gene), lifestyle (e.g. smoking, exercise), health (e.g. cardiovascular risks, depression, hearing loss), social (e.g. loneliness, isolation) and environment (e.g. pollutants)³. It's been estimated that 1 in 3 dementia cases could potentially be prevented by addressing risk factors⁴.

Diversity and brain health

Differential exposure to social, economic, and environmental risks factors between individuals lead to health inequities,

which are defined as differences in health which are systematic, socially produced (and therefore modifiable), and unfair⁵. Such inequities are not occasional or random, rather they are significant, frequent, or persistent associations⁶. For example, in Ireland an additional 10.2 infant deaths per 1,000 live births are found in the Irish Traveller community (an Irish ethnic minority group) compared to the general population⁷; 30 year differences in mortality are found in adults who are homeless in Dublin compared to the general population⁸, and a 2.80 beats per minute higher resting heart rate (a risk factor for cardiovascular disease in older adults) are found in older adults in the lowest compared to the highest income quintile⁹. Systematic differences in brain health have also been found. For example, a higher prevalence of cognitive impairment has been found among adults who are homeless in California compared to the general population¹⁰.

In seeking to address health inequities, epidemiologist Sir Michael Marmot, Chair of the Commission on the Social Determinants of Health (SDH), urged us to address the 'causes of causes' by tackling the conditions of life for people as they are born, live, work and age¹¹.

In 2018, Sir Marmot presiding over the Pan American Health Organization's (PAHO) Commission on Equity and Health Inequalities in the Americas report, expanded the SDH framework to include structural drivers (e.g. institutional racism) and the intersection of various drivers as factors which adversely increase the experience of the social determinants of health, see [Figure 1](#)¹².

Structural drivers, or structural violence, is a term coined by anthropologists, which describes how oppressive social structures or institutions can result in death, injury, illness, subjugation, stigmatization, and even psychological terror for specific social groups or populations¹³. Structural factors are borne out as determinants in the brain health literature, such as level of education attainment, which is impacted by many factors, including the quality of education. For example, in the United States, schools in the South were racially segregated up to 1954, with schools for African American students on average receiving fewer resources (e.g. shorter school term length, higher pupil-teacher ratio) than schools for white students¹⁴. Attendance at schools in southern states was subsequently found to be associated with years of completed education and late-life cognitive decline¹⁴. Structural factors are also important in the context of healthcare systems which can also influence health outcomes. For example, long waiting times in the Emergency Department can be a barrier for individuals with addiction issues or attention deficit hyperactivity disorder, common within the homeless population¹⁵. Access to health care is defined as the opportunity to reach and obtain appropriate health care services in situations of perceived need for care¹⁶. Components of access include 'approachability' (people can identify their health needs and the services needed to meet these needs) 'acceptability' (people accept the socio-cultural aspects of the service); 'availability' (an adequate supply of services relative to needs); 'accommodation' (health services can be reached both physically

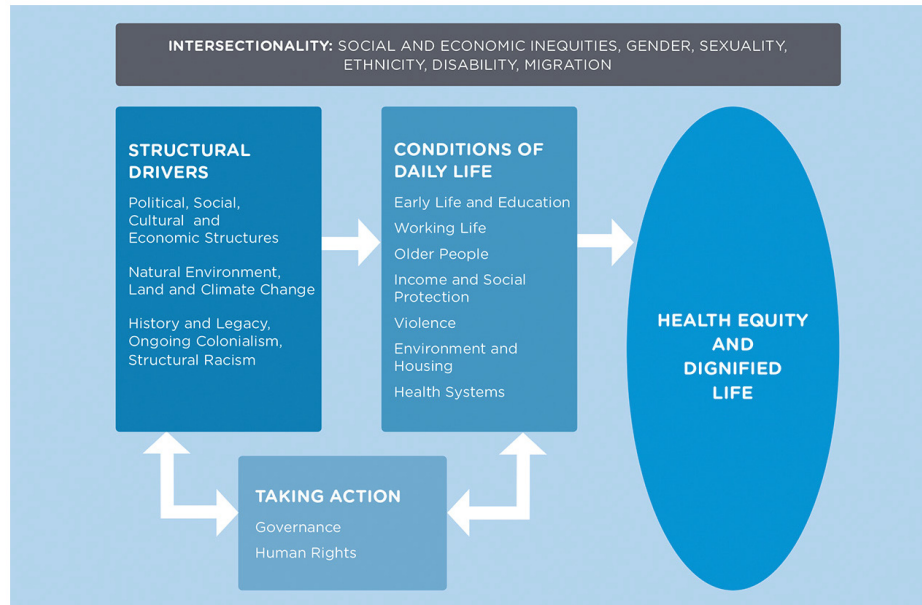


Figure 1. Conceptual Framework of the Pan American Health Organization (PAHO) Commission on Equity and Health Inequalities in the Americas report (Marmot 2018). Figure reprinted from The Lancet, 392(10161) Marmot M, Just societies, health equity, and dignified lives: the PAHO Equity Commission., Pages No. 2247-2250, Copyright (2018), with permission from Elsevier.

and in a timely manner); ‘affordability’ (the in/direct cost implications to the person in relation to need); and ‘appropriateness’ (fit between services and person’s needs), see [Figure 2](#)¹⁶.

Intersectionality refers to the complexities of how people experience disadvantage based on a broad array of social group memberships (e.g. race, class, religion, sexual orientation, ability and gender)¹⁷. Cultural and political processes produce each of these aspects of identity. Each person has a social location where their identities overlap, which determines their existence in the social and political world, their relationship to others and to dominant cultures, and the kinds of power and privilege they have access to and can exercise¹⁷. Across the world, identity is used to influence the distribution of power and privilege and both sub/conscious oppressive actions maintain the status quo. Oppressive actions are expressed by individuals (e.g. attitudes and behaviours), institutions (e.g. policies, practices and norms), and society/culture (e.g. values, beliefs and customs). These actions do not ‘just happen’, rather they are reproduced in a process of normalization and reinforced in a cycle of ‘business as usual’. It’s possible to interrupt oppressive cycles by calling into question the truth of what is learned about the power relationships among different social groups and our own social position¹⁷.

Diversity and brain health: Perspectives from older LGBT+ people

In this context, the workshop was developed by a group of Fellows who were aware that lesbian, gay, bisexual, transgender/transsexual plus (LGBT+) people were and are not always

accepted both within and across countries. In 2019 being LGBT+ was illegal in 68 countries worldwide and punishable by death in 12 countries¹⁸. Furthermore, researchers have reported experiencing barriers to publication with an LGBT focus without severe risk of harm to themselves, their colleagues, and their families¹⁹. We were also aware these identities can go unseen in healthcare settings. Through our clinical rotations (as part of the Fellowship programme), we were cognizant that for some people, changes in cognition associated with dementia (affecting an estimated 55,000 older Irish adults), could result in a disclosure of their true gender or sexuality for the first time. We agreed that the older LGBT+ community would be a valuable lens through which to look at diversity and to learn about how diverse identities impact the experience of ageing, interactions with healthcare services, and the ability to ‘age in place’. Ireland provided an interesting case example having transitioned recently and rapidly from a State in which homosexuality was a crime, to one which welcomed marriage equality and gender recognition legislation. Together with two advisors¹ and with partners in the School of Law at TCD², we developed a workshop held on June 4th at TCD, to examine diversity and

¹ *Advisors:* Prof Agnes Higgins, Professor in Mental Health, School of Nursing & Midwifery at TCD and the author of Visible Lives report (Higgins *et al.*, 2011), Ciaran McKinney, Engage Programme Manager (Promoting active citizenship and lifelong learning) at Age & Opportunity, formerly Director of Gay HIV Strategies at Gay and Lesbian Equality Network.

² *Partners:* From the School of Law in TCD, Prof Mark Bell and Prof Mary Rogan contributed to workshop planning, while Prof Ivana Bacik presented during the workshop.

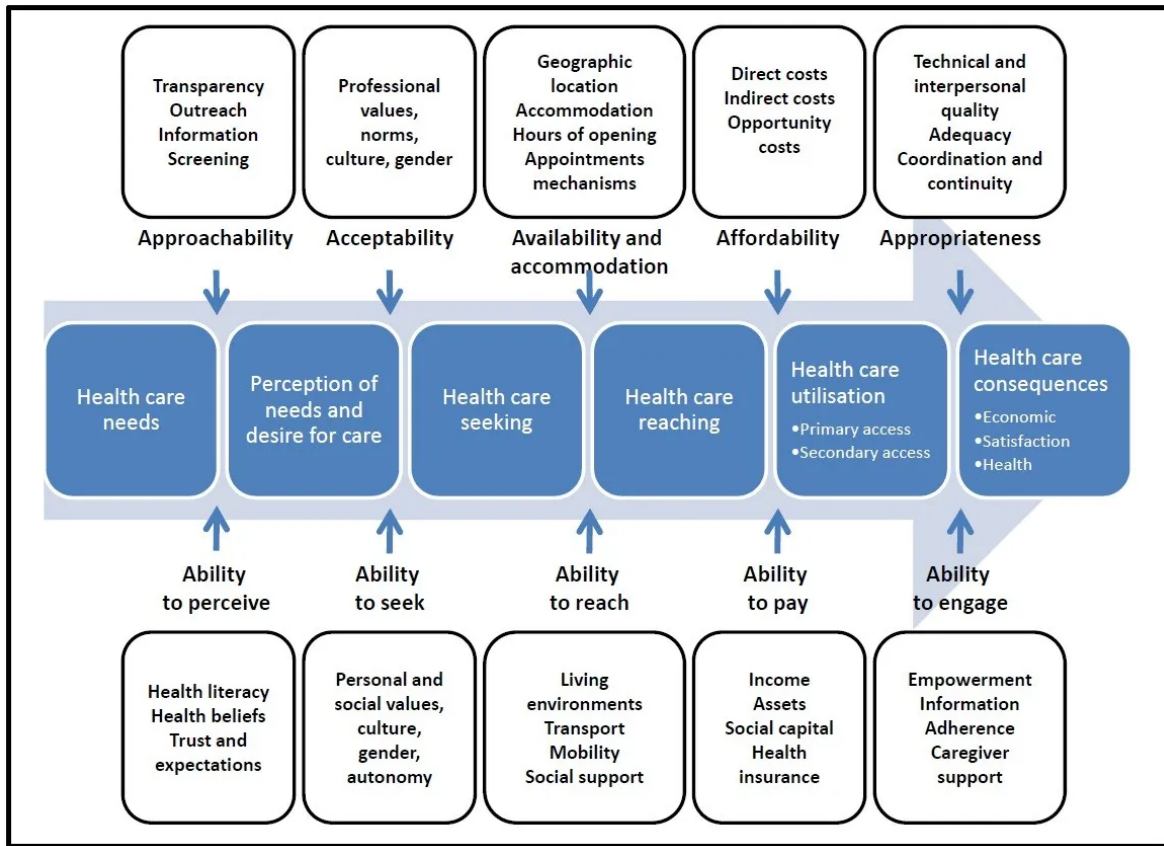


Figure 2. A conceptual framework of access to health care (Levesque et al. 2013). Figure reproduced from (Levesque et al. 2013) under the terms of the [Creative Commons Attribution 2.0 Generic License \(CC BY 2.0\)](https://creativecommons.org/licenses/by/2.0/) which permits unrestricted use, distribution, and reproduction in any medium, provided the original work is properly cited.

brain health through the lens of the LGBT+ community³. Following the workshop, Roe and Walrath wrote an opinion editorial, published in the *Irish Times* during the 2019 PRIDE festival²⁰ and were subsequently invited by HRB Open Research to provide a more detailed expansion of that work.

³ 85 people registered for the workshop on June 4th 2019 from organisations representing the LGBT+ community e.g Gay and Lesbian Equality Network, Older Women Lesbians and Transgender Equality Network, Running Amach, and LGBT Ireland. Delegates also came from the Department of Health, charities representing older adults and academia. Research Ast. Prof Roe and Dr Walrath led the workshop with contributions invited from: Senator Davis Norris, Marianne McGiffin (Older Wiser Lesbians), Claire Farrell (Transgender Equality Network Ireland), Ciaran McKinney (Age and Opportunity), Prof Agnes Higgins (School of Nursing, TCD), Prof Victor Valcour (GBHI- UCSF), Prof Brian Lawlor (GBHI- TCD), Prof Mark Bell (School of Law, TCD), Prof Ivana Bacik (School of Law, TCD), Amanda Dunsmore (Limerick School of Art & Design, LIT), Karl Duff (Department of Health, Ireland). During the workshop, Dr Laura Booi (GBHI-TCD) and Ast. Prof Eimear McGlinchey (GBHI-TCD) took written feedback from attendees on post-its and Prof Mary Rogan (School of Law, TCD) and Prof Miriam Galvin (GBHI-TCD) took notes on the workshop themes and provided a synthesizing wrap up.

Below, we outline 10 things we learned about diversity and brain health, by listening to the lived experience of older LGBT+ people and their advocates.

1. **The ‘LGBT+’ experience:** It’s easy to think there is a common ‘LGBT+ experience’, when we view this identity through a heteronormative lens. In reality, variation exists between different sexualities and gender identities, which intersect with other factors, such as social class. For example, some attendees spoke about the psychological stress of needing to hide their identities in their workplaces. For some, their identity would have led to expulsion due to the explicit rules of the organization, while others felt the stigma would have serious repercussions for their jobs or businesses. By contrast, other participants spoke with pride about being part of a community which supported one another and a social movement which brought about positive change. It became clear that LGBT+ specific protective factors (e.g. increased resilience) and risk factors (e.g. internalized stigma or disenfranchised grief²¹) to general health and brain health, were not experienced universally within this community. Therefore; while we need to examine the experiences and outcomes of LGBT+ people as a social group within the general population, it is important to examine the

within-group variation with respect to the nature and distribution of protective and risk factors.

2. Dissonant identities: Some LGBT+ people experienced dissonance between their LGBT+ identity and other identities. For example, an attendee described coming under pressure to ‘drop’ her LGBT+ identity to be accepted as grandmother to her new grandchild. Sociologists describe this as a ‘psychological colonization’ where oppressed group members knowingly, but not necessarily voluntarily, go along with their own mistreatment to survive or to maintain some status, livelihood, or other benefit¹⁷. Her narrative of hidden identity, resonates with a story recently published in the *Irish Times*, of a closeted gay man who internalized stigma, and kept secret from his family his (required) love for another man until his death²².

3. The attitudes of healthcare providers: We learned how healthcare services can be ill prepared to accommodate LGBT+ people. For example, a transgender woman described receiving a single room in hospital, although she didn’t have private health insurance, something she felt was because health care staff felt she did not fit into the ‘male’ or ‘female’ wards. This could be seen as an example of a subconscious (i.e. implicit) bias if organisations such as hospitals fail to develop policies to guide staff. For others, issues of discrimination at the societal level and lack of adequate training for health care professionals may lead to negative experiences which colour future interactions with healthcare practitioners. Attendees noted a particular strain regarding homecare workers whose personal beliefs interfered with providing respectful compassionate care to members of the LGBT+ community. This could be seen as an example of conscious (i.e. explicit) bias, where a staff member knowingly commented in a stigmatising or derogatory way to a service user. Workshop attendees also called for the presence of LGBT+ individuals as well as allies at every level of health services.

4. Source of social support and caregiving: For some attendees a ‘chosen family’ comprising emotional and social ties, is as important as a biological or legal family. This was especially the case before the legal recognition of same sex marriage, as networks of peers, friends and non-relatives are a major source of support and, importantly, know the person’s care and the end of life preferences. These individuals or chosen families need to be recognized and included by clinicians and care providers in decision-making discussions. This could be done for example, by asking in a clinical encounter “Is there anyone important to you that you would like involved now?” instead of assuming that the biological family is the only or most appropriate source.

5. History and healthy ageing: For some workshop attendees, previous negative experiences in society, or simply their preference to be with people from the LGBT+ community, makes services such as day centres or even care homes which have a predominantly heteronormative culture, an uncomfortable space. This is important, as by failing to appreciate the effects

of historical stigma and discrimination, we are in danger of “seeing the puddles, but not the rainstorms and certainly not the gathering thunderclouds”¹³, and running the risk of creating barriers to care which will perpetuate health inequities²³. By this we mean failing to address how older LGBT+ people may not feel accepted in these spaces due to fear or stigma.

6. Access to homecare: In Ireland, homecare is wedded to the nuclear family, particularly the role of women who make up the majority of our informal or family carers. The State’s role in homecare is defined by the principle of subsidiarity in care and social matters - family first and State second - a legacy of our socially conservative history²⁴. Consequently, State provided homecare often only supplements informal care, offering enough hours to support an older adult, only if informal care can cover the remainder hours^{24,25}. All this means those with non-traditional family arrangements, typical within the LGBT+ community, are less likely to receive homecare and the only option becomes costly residential care.

7. Ageing and health policy: To address health inequities and social exclusion, strategic commitments must be supported by mechanisms such as target setting, monitoring and evaluation underpinned by adequate data collection to measure progress. However, in Ireland, though the Government identifies older LGBT+ people as a group at risk of social exclusion, it has yet to monitor their experiences or develop bespoke policy solutions which support their inclusion. For example, while LGBT+ people are identified as a group vulnerable to social exclusion in the National Positive Ageing Strategy²⁶, their experiences are not captured by the national indicators to monitor the strategies’ implementation^{27,28}.

8. Social inclusion and LGBT+ communities: We learned how activities designed for geographically-based communities fail to address the needs of dispersed communities without spatial boundaries. For example, geographically-based initiatives such as [Men’s Sheds](#) have been enormously successful in supporting healthy ageing among men. However, older lesbians across the country who historically met-up to support each other, are now at risk of isolation and loneliness in old age as they cannot secure physical spaces in urban areas because of the competition for those resources.

9. Harnessing the strength of diverse social groups: The successful fight for social recognition of diverse gender and sexual identities highlights the skills, knowledge, and vocabulary that this community can bring to the identity politics of ageing. This community knows how to support one another through the formation of community groups such as [OWLS](#), [GOLD](#), [Running Amach](#), and [Outhouse](#), how to fight for services that do not exist, how to coin terms for concepts society only knows subconsciously.

10. Being inclusive: Attendees remarked the needs of older LGBT+ people will change over time. The experience of being LGBT+ people today is different to what it was

historically, with shifts in social attitudes, legal rights and the language. Thus, the solutions to create an inclusive society are not neat interventions. Rather inclusivity needs to be a value, and 'being inclusive' recognized as a process which focuses on what is meaningful to people, what facilitates people to be themselves in the world, to age as they are and to leave it as who they are. For LGBT+ people this means being able to maintain their identity through ageing and end of life. Learning how to be inclusive to LGBT+ people will teach us how to be inclusive to all forms of diversity, including those living with diseases of the brain²⁹.

Conclusion

We learned the older LGBT+ community experience healthcare services and ageing in place in different ways. This community comprises several sub-communities which play an important role in the lives of its members by providing social outlet and support; containing a rich reservoir of history and identity; and being highly resourced in advocacy and self-expression. As older LGBT+ people age, they are finding ways to harness the opportunities which ageing brings, while learning to adapt to their changing personal circumstances. Some of the challenges faced by this community can include negative interactions with healthcare workers and the design of societal structures and policies which fail to address their specific needs. These factors can negatively affect older LGBT+ people in terms of a heightened risk of loneliness and discrimination in old age, their ability to access inclusive person-centred care where they feel safe and accepted, and their ability to continue to fully participate in society while maintaining their identity.

The issues raised by the workshop participants challenge our societal responsiveness on a number of levels. At the level of the healthcare system, issues such as these speak to the *appropriateness* of healthcare services and delivery, rather than simply to the *availability* of services, often the most commonly spoken about barrier to accessing care in the Irish context. At the level of social policies, these issues speak to the need for the design of policies for the population, not blind to the specific needs of sub-groups, such as older LGBT+ people. At the individual level, these issues speak to the lack of skills and language which would make everyday interactions more accommodating, inclusive and welcoming for older LGBT+ people.

In conclusion, by learning how to become more inclusive of the LGBT+ community and their needs, we learn the skill of being an accepting and inclusive society to all forms of diversity. And if we can be respectful of differences of whatever kind and develop inclusive services and policies, we can address structural and intersectional factors that impact on healthy ageing. We call on researchers, clinicians, service planners and policy makers to recognize the importance of knowing their own 'social location' and how it might blind them to the needs and experiences of diverse groups in their work.

Recommendations

We call specifically for the research, policy and health care community to:

- Collect data to identify LGBT+ people in quantitative studies on ageing and consider how this identity intersects with other factors to create health inequities in old age. Undertake qualitative research to understand the ways in which discrimination and stigma affects older LGBT+ people at individual, institutional, societal and cultural levels.
- Provide diversity-awareness training programmes⁴ which gives healthcare professionals the language and skills to identify and support older LGBT+ people in clinical practice; including the identification and inclusion of an individuals' 'chosen family' in medical and social decisions.
- Develop policies which harness the existing strengths and skills (i.e. intrinsic capacity) of diverse groups, which are socially rather than geographically defined, in the promotion of healthy ageing.
- Evaluate strategies designed to improve access to healthcare and to address social exclusion by monitoring the experiences and outcomes of diverse social groups, such as older LGBT+ people.
- Consider how best to support older LGBT+ people with homecare where no informal care is available.
- Recognise that 'inclusivity' is not a standalone intervention, but an ongoing process, allowing people to live, age and die as who they wish to be.

Data availability

Underlying data

No data are associated with this article

Acknowledgements

The authors acknowledge the contribution made by colleagues to the running of this workshop including Prof Victor Valcour and Prof Brian Lawlor, Executive Director and Deputy Executive Director, at the Global Brain Health Institute; Prof Mark Bell and Prof Mary Rogan in the School of Law at Trinity College Dublin; and Prof Agnes Higgins from the School of Nursing at Trinity College Dublin and Ciaran McKinney from Age and Opportunity. Finally, we are grateful to our colleague Sarah D'Alessio, an Atlantic Fellow at GBHI, for her comments on an earlier draft of this Letter.

⁴ (Note: Since the workshop, LGBT Ireland have been awarded funding from the Slaintecare Integration Fund Project for their training programme for health and social care professionals working in older age services.)

References

1. National Institute of Ageing: **What is brain health?** 2019 [cited 2019 17th September]. [Reference Source](#)
2. National Institute of Neurological Disorders and Stroke: **Brain Basics: Know your Brain.** 2019 [cited 2019 20th September]. [Reference Source](#)
3. Erkinen MG, Kim MO, Geschwind MD: **Clinical Neurology and Epidemiology of the Major Neurodegenerative Diseases.** *Cold Spring Harb Perspect Biol.* 2018; 10(4): pii: a033118. [PubMed Abstract](#) | [Publisher Full Text](#)
4. Livingston G, Sommerlad A, Orgeta V, *et al.*: **Dementia prevention, intervention, and care.** *Lancet.* 2017; 390(10113): 2673–2734. [PubMed Abstract](#) | [Publisher Full Text](#)
5. Whitehead MA, Dahlgren G: **Concepts and principles for tackling social inequities in health: Levelling up Part 1.** 2006; World Health Organisation: Copenhagen. [Reference Source](#)
6. Braveman P, Gruskin S: **Defining equity in health.** *J Epidemiol Community Health.* 2003; 57(4): 254–258. [PubMed Abstract](#) | [Publisher Full Text](#) | [Free Full Text](#)
7. All Ireland Traveller Health Study Team: **All Ireland Traveller Health Study Summary of Findings.** 2010. [Reference Source](#)
8. Ivers JH, Zgaga L, O'Donoghue-Hynes B, *et al.*: **Five-year standardised mortality ratios in a cohort of homeless people in Dublin.** *BMJ Open.* 2019; 9(1): e023010. [PubMed Abstract](#) | [Publisher Full Text](#) | [Free Full Text](#)
9. McCrory C, Finucane C, O'Hare C, *et al.*: **Social Disadvantage and Social Isolation Are Associated With a Higher Resting Heart Rate: Evidence From The Irish Longitudinal Study on Ageing.** *J Gerontol B Psychol Sci Soc Sci.* 2016; 71(3): 463–73. [PubMed Abstract](#) | [Publisher Full Text](#)
10. Hurstak E, Johnson JK, Tieu L, *et al.*: **Factors associated with cognitive impairment in a cohort of older homeless adults: Results from the HOPE HOME study.** *Drug Alcohol Depend.* 2017; 178: 562–570. [PubMed Abstract](#) | [Publisher Full Text](#) | [Free Full Text](#)
11. Marmot M: **Social justice, epidemiology and health inequalities.** *Eur J Epidemiol.* 2017; 32(7): 537–546. [PubMed Abstract](#) | [Publisher Full Text](#) | [Free Full Text](#)
12. Marmot M: **Just societies, health equity, and dignified lives: the PAHO Equity Commission.** *Lancet.* 2018; 392(10161): 2247–2250. [PubMed Abstract](#) | [Publisher Full Text](#)
13. Farmer P: **An Anthropology of Structural Violence.** *Curr Anthropol.* 2004; 45(3): 305–325. [Publisher Full Text](#)
14. Liu SY, Glymour MM, Zahodne LB, *et al.*: **Role of Place in Explaining Racial Heterogeneity in Cognitive Outcomes among Older Adults.** *J Int Neuropsychol Soc.* 2015; 21(9): 677–687. [PubMed Abstract](#) | [Publisher Full Text](#)
15. Ní Cheallaigh C, Cullivan S, Sears J, *et al.*: **Usage of unscheduled hospital care by homeless individuals in Dublin, Ireland: a cross-sectional study.** *BMJ Open.* 2017; 7(11): e016420. [PubMed Abstract](#) | [Publisher Full Text](#) | [Free Full Text](#)
16. Levesque JF, Harris MF, Russell G: **Patient-centred access to health care: conceptualising access at the interface of health systems and populations.** *Int J Equity Health.* 2013; 12(1): 18. [PubMed Abstract](#) | [Publisher Full Text](#) | [Free Full Text](#)
17. Hardiman R, Jackson B, Griffin P: **Conceptual frameworks.** In: *Readings for Diversity and Social Justice.* Adams M, *et al.*: Editors. 2013, Routledge: New York.
18. ILGA World: Lucas Ramon Mendos: **State-Sponsored Homophobia 2019: Global Legislation Overview Update.** Geneva, International Lesbian, Gay Bisexual, Trans and Intersex Association. 2019. [Reference Source](#)
19. Goldsen KF, de Vries B: **Global Aging With Pride: International Perspectives on LGBT Aging.** *Int J Aging Hum Dev.* 2019; 88(4): 315–324. [PubMed Abstract](#) | [Publisher Full Text](#) | [Free Full Text](#)
20. Walrath D, Roe L: **A basic human right to age as we are.** In: *Irish Times.* 2019: Dublin.
21. Higgins A, Sharek DB, Mccann E, *et al.*: **Visible Lives Identifying the experiences and needs of older Lesbian, Gay, Bisexual and Transgender (LGBT) people in Ireland.** G.a.L.E.N. (GLEN), Editor. 2011; Dublin. [Reference Source](#)
22. O'Connell J: **He had loved this man in secret for years. Now it fell to her to find him.** In: *Irish Times.* 2019; Dublin. [Reference Source](#)
23. O'Donovan MM, McCallion P, McCarron M, *et al.*: **A narrative synthesis scoping review of life course domains within health service utilisation frameworks [version 1; peer review: 2 approved].** *HRB Open Res.* 2019; 2. [Publisher Full Text](#)
24. Timonen V, Doyle M: **From the workhouse to the home: evolution of care policy for older people in Ireland.** *Int J Social Soc Policy.* 2008; 28: 76–89. [Publisher Full Text](#)
25. McNamara A, Normand C, Whelan B: **Patterns and determinants of healthcare utilisation in Ireland.** The Irish Longitudinal Study on Ageing: Dublin. 2013. [Reference Source](#)
26. Department of Health: **The National Positive Ageing Strategy.** G.o. Ireland, Editor. The Stationary Office, Dublin. 2013. [Reference Source](#)
27. Department of Health: **Health and Positive Ageing Initiative: Positive Ageing 2016 National Indicators Report.** 2016. [Reference Source](#)
28. Department of Health: **Positive Ageing in Age Friendly Cities and Counties: Local indicators for Ireland findings from the HaPAI Survey.** 2018. [Reference Source](#)
29. Walrath D, Lawlor B: **Dementia: towards a new republic of hope.** *Lancet.* 2019; 394(10203): 1002–1003. [PubMed Abstract](#) | [Publisher Full Text](#)

Open Peer Review

Current Peer Review Status:   

Version 2

Reviewer Report 03 June 2020

<https://doi.org/10.21956/hrbopenres.14162.r27431>

© 2020 Marsack J. This is an open access peer review report distributed under the terms of the [Creative Commons Attribution License](#), which permits unrestricted use, distribution, and reproduction in any medium, provided the original work is properly cited.



Jessica Marsack 

Department of Health Behavior and Biological Sciences, School of Nursing, University of Michigan, Ann Arbor, MI, USA

No additional comments.

Competing Interests: No competing interests were disclosed.

Reviewer Expertise: Health disparities, Sexual and gender minority health, Internal medicine, Kidney failure & dialysis, End of life care.

I confirm that I have read this submission and believe that I have an appropriate level of expertise to confirm that it is of an acceptable scientific standard.

Reviewer Report 28 May 2020

<https://doi.org/10.21956/hrbopenres.14162.r27432>

© 2020 Dorsen C. This is an open access peer review report distributed under the terms of the [Creative Commons Attribution License](#), which permits unrestricted use, distribution, and reproduction in any medium, provided the original work is properly cited.



Caroline Dorsen 

Rory Meyers College of Nursing, New York University, New York, NY, USA

I have no further comments. Thank you again for the opportunity to review this manuscript. Looking forward to future collaborations.

Competing Interests: No competing interests were disclosed.

Reviewer Expertise: LGBTQ health disparities with a focus on stigmatizing and affirming care from healthcare providers and how they impact sexual risk and substance use behaviors among sexual and gender minority persons.

I confirm that I have read this submission and believe that I have an appropriate level of expertise to confirm that it is of an acceptable scientific standard.

Reviewer Report 21 May 2020

<https://doi.org/10.21956/hrbopenres.14162.r27433>

© 2020 Gutman G. This is an open access peer review report distributed under the terms of the [Creative Commons Attribution License](#), which permits unrestricted use, distribution, and reproduction in any medium, provided the original work is properly cited.



Gloria Gutman 

Gerontology Department, Simon Fraser University, Vancouver, Canada

No further comments.

Competing Interests: I have no financial conflict of interest and have not published with any of the authors nor have I had any prior contact with any except L. Booi. During the years she was studying for her PhD at Simon Fraser University and held a fellowship from the Canadian Frailty Network, while not a member of her dissertation committee I did serve as an academic mentor. I do not believe this affected my ability to review impartially.

Reviewer Expertise: Health promotion and aging, LGBT aging, gerontechnology, aging and the built environment, disasters and aging, elder abuse prevention and mitigation.

I confirm that I have read this submission and believe that I have an appropriate level of expertise to confirm that it is of an acceptable scientific standard.

Version 1

Reviewer Report 07 April 2020

<https://doi.org/10.21956/hrbopenres.14076.r27175>

© 2020 Gutman G. This is an open access peer review report distributed under the terms of the [Creative Commons Attribution License](#), which permits unrestricted use, distribution, and reproduction in any medium, provided the original work is properly cited.



Gloria Gutman 

Gerontology Department, Simon Fraser University, Vancouver, Canada

I agree with reviewer 1 that if this open letter is directed to an international readership it would be helpful if terms known mainly to the Irish population were explained. I needed to go to Google to determine that Travellers were an ethnic minority and to learn that “rough sleepers” were what I believe elsewhere are referred to as the homeless population. My main recommendation however is that consideration be given to modifying the title, which is a bit misleading. The main argument of the letter, which is an important one, is the need for inclusivity in research, practice and policy related to brain health. We need the voices of marginalized groups such as the LGBT population to be heard, and their lived experiences to be recognized but also we need hard data i.e. numbers with respect to incidence and prevalence of neurodegenerative diseases such as dementia affecting this population – which is what at first I thought I might find in the article. We also need to recognize the “diversity within diversity” reflected in learnings #1 and #10. In the case of research, this requires data collection and analysis to explore and to “slice and dice” the LGBT population. Although not stated in the letter, to date the preponderance of research is on gay men. Services and service providers need to be reminded, as the letter suggests, that this is not a homogeneous group. In general, the learnings part of the letter are excellent and concordant with research from elsewhere. They could be tied back a bit more to the theme and to dementia and other of the conditions the research group specializes in but otherwise, the authors are to be congratulated for conducting the workshop and sharing their findings via the open letter.

Is the rationale for the Open Letter provided in sufficient detail?

Partly

Does the article adequately reference differing views and opinions?

Yes

Are all factual statements correct, and are statements and arguments made adequately supported by citations?

Yes

Is the Open Letter written in accessible language?

Partly

Where applicable, are recommendations and next steps explained clearly for others to follow?

Yes

Competing Interests: I have no financial conflict of interest and have not published with any of the authors nor have I had any prior contact with any except L. Booi. During the years she was studying for her PhD at Simon Fraser University and held a fellowship from the Canadian Frailty Network, while not a member of her dissertation committee I did serve as an academic mentor. I do not believe this affected my ability to review impartially.

Reviewer Expertise: Health promotion and aging, LGBT aging, gerontechnology, aging and the built environment, disasters and aging, elder abuse prevention and mitigation.

I confirm that I have read this submission and believe that I have an appropriate level of expertise to confirm that it is of an acceptable scientific standard.

Author Response 15 May 2020

Lorna Roe, Trinity College Dublin, the University of Dublin, Dublin, Ireland

Thank you for your time in reviewing our article. We recognize that the term 'travellers' needs to be described for an international audience and have amended the text with reference to the meaning of the term in the Irish context. We are grateful for your suggestion to change the title to reflect the article content more clearly, the revised title is '*To live and age as who we really are: Perspectives from older LGBT+ people in Ireland*'.

It was beyond the scope of the workshop to collect any self-reported or objective measures of brain health from those attending. However, we intend to pursue this in our future work on diversity and brain health. Finally, we added a section examining the higher level learnings from this workshop in relation to the theme of brain health and diversity. And we intend to continue to contribute to this area, given the gaps in knowledge you have outlined.

Competing Interests: No competing interests were disclosed.

Reviewer Report 31 March 2020

<https://doi.org/10.21956/hrbopenres.14076.r27226>

© 2020 Dorsen C. This is an open access peer review report distributed under the terms of the [Creative Commons Attribution License](#), which permits unrestricted use, distribution, and reproduction in any medium, provided the original work is properly cited.



Caroline Dorsen 

Rory Meyers College of Nursing, New York University, New York, NY, USA

Thank you for the opportunity to review your paper 'To live and age as who we really are'. This is a very timely and important topic as we face the global ageing of the population, with relatively little understanding of the unique culture and special health and social needs of older LGBTQ+ persons. I hope my comments below are helpful as you prepare your manuscript.

Please note that as this is not a research report, my review does not follow the usual protocol.

1. Overall, I liked the paper content and structure very much, and found it was informative and written in a useful way for both health and social care providers. Well done. Most of my revision suggestions are small.
2. I found the writing clear, although there are a few places that the authors use language that is perhaps not understood by non-Irish readers. For example, 'rough sleepers' is not a term we use in the US. I raise this issue to make sure that you are understood by the maximum number of readers, especially because you give examples from the US, specifically making the paper of interest to North Americans.
3. Similarly, you use a number of terms in the paper that would not be acceptable to readers from the US. The clearest example of this is describing LGBTQ+ persons as 'non-normative.' This is reflective of a very heteronormative view of sexual orientation and edgier identity and would be quite offensive to some LGBTQ+ people and allies.
4. There is a sentence fragment 'While a lesbian...'

5. I would like to see you differentiate between subconscious bias (or implicit) and conscious (or explicit) bias in the attitudes section. This is essential for understanding the nuances of the barriers to access to and utilization of care among LGBTQ+ persons.
6. I am glad that you mentioned the historical moment and subsequent shifts in social and legal norms. I think it is important to say something here about the fact that we experience significant controversies around the globe about LGBTQ rights, and that patients and families may have had a huge variation of experiences previously, and sense of safety currently. There are over 70 countries in the world where it is still illegal to be LGBTQ, in about 15 of them LGBTQ is a crime punishable by death.
7. Excellent recommendations for the future.

Is the rationale for the Open Letter provided in sufficient detail?

Yes

Does the article adequately reference differing views and opinions?

Yes

Are all factual statements correct, and are statements and arguments made adequately supported by citations?

Partly

Is the Open Letter written in accessible language?

Partly

Where applicable, are recommendations and next steps explained clearly for others to follow?

Yes

Competing Interests: No competing interests were disclosed.

Reviewer Expertise: LGBTQ health disparities with a focus on stigmatizing and affirming care from healthcare providers and how they impact sexual risk and substance use behaviors among sexual and gender minority persons.

I confirm that I have read this submission and believe that I have an appropriate level of expertise to confirm that it is of an acceptable scientific standard, however I have significant reservations, as outlined above.

Author Response 15 May 2020

Lorna Roe, Trinity College Dublin, the University of Dublin, Dublin, Ireland

Thank you for your time in reviewing our article. We have addressed the issues you have raised and amended the original text. The term 'rough sleepers' is changed to 'adults who are homeless'; we have deleted 'non-normative'. We have addressed the sentence fragment identified in the text. We illustrated where there may be examples of subconscious and conscious bias in some of the issues described by workshop participants. However this requires further work exploring the attitudes and behaviours of people towards older LGBT+ people to fully understand sub/conscious

bias. We recognise that being LGBT+ is unsafe in many countries around the world and have included additional text to explicitly refer to this issue.

The authors appreciate your contribution and feel that the article is stronger because of the points that you raised and the amendments in the text.

Competing Interests: No competing interests were disclosed.

Reviewer Report 16 March 2020

<https://doi.org/10.21956/hrbopenres.14076.r27229>

© 2020 Marsack J. This is an open access peer review report distributed under the terms of the [Creative Commons Attribution License](#), which permits unrestricted use, distribution, and reproduction in any medium, provided the original work is properly cited.



Jessica Marsack 

Department of Health Behavior and Biological Sciences, School of Nursing, University of Michigan, Ann Arbor, MI, USA

This open letter is a wonderful expanded discussion of an opinion piece published in the Irish Times. The open letter as a whole discusses the authors' "lessons learned" from a workshop held around the aging LGBT+ community. The rationale for this article is clearly stated with good background information and relevant citations, so the factual statements made in the article are covered. However, the criteria "does the article adequately reference differing views and opinions?" is only partly covered. While the article does mention some opposing opinions, e.g. under #3 where the attitudes of healthcare providers are described, the majority of the article is about one viewpoint. Obviously the article is going to focus on this viewpoint because it is discussing a workshop around a singular viewpoint, but it may be worthwhile to lend some citations to the opposition rather than just case evidence. My only comment about language being "accessible" is really in relation to description of transgender individuals - for example, the use of the phrase "trans-woman" in #3. Wording such as "transfeminine person" might be more inclusive, or "transgender woman" more formal. The next steps and recommendations are clearly laid out, reasonable, and described in some detail.

Is the rationale for the Open Letter provided in sufficient detail?

Yes

Does the article adequately reference differing views and opinions?

Partly

Are all factual statements correct, and are statements and arguments made adequately supported by citations?

Yes

Is the Open Letter written in accessible language?

Yes

Where applicable, are recommendations and next steps explained clearly for others to follow?

Yes

Competing Interests: No competing interests were disclosed.

Reviewer Expertise: Health disparities, Sexual and gender minority health, Internal medicine, Kidney failure & dialysis, End of life care.

I confirm that I have read this submission and believe that I have an appropriate level of expertise to confirm that it is of an acceptable scientific standard.

Author Response 15 May 2020

Lorna Roe, Trinity College Dublin, the University of Dublin, Dublin, Ireland

Thank you for your time in reviewing our article. We reviewed some of the language used to describe LGBT+ people in keeping with international norms and your suggestion regarding the accessibility of the term 'trans-woman'. This has been changed to 'transgender woman' in the text. In relation to including opposing perspectives and arguments in this article, we feel that the article as currently constructed reports on the workshop proceedings and views expressed therein. We agree that alternative perspectives are important in order to get a more comprehensive view of LGBT communities and brain health. This was beyond the scope of this particular piece of work, but we aim to conduct a systematic literature review in our future work in this topic area which will capture divergent views and alternative perspectives.

Competing Interests: No competing interests were disclosed.