

# NOVA CASA DO ESTUDANTE PARA O CENTRO

CENTRO - CIDADE BAIXA, PORTO ALEGRE



LOCALIZAÇÃO  
esc 1/1500



edifícios altos em frente ao terreno



viaduto da av. João Pessoa



campus central da UFRGS



Gen. Lima e Silva e seu comércio



edifício Edel Trade Center na quadra ao lado

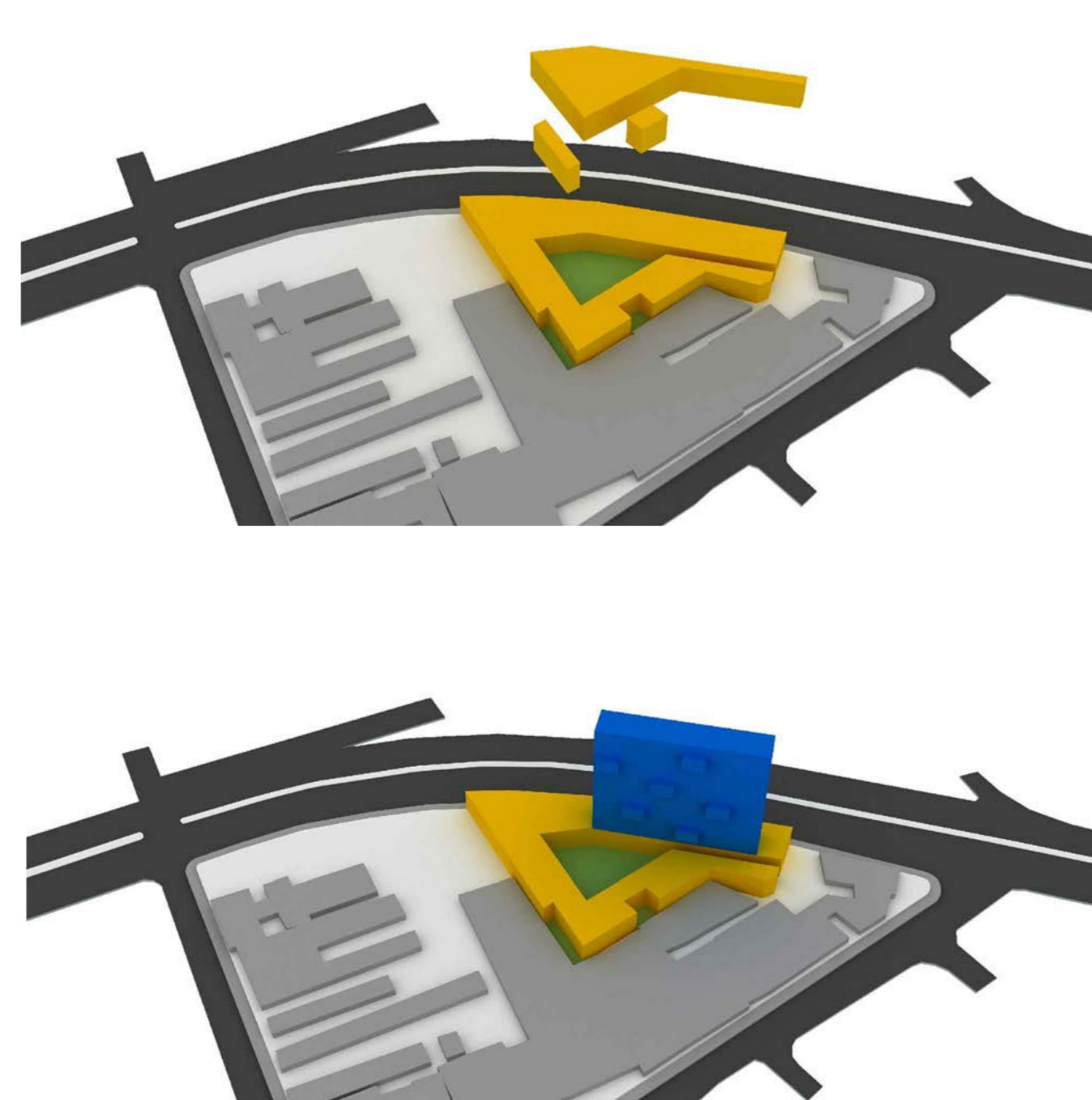
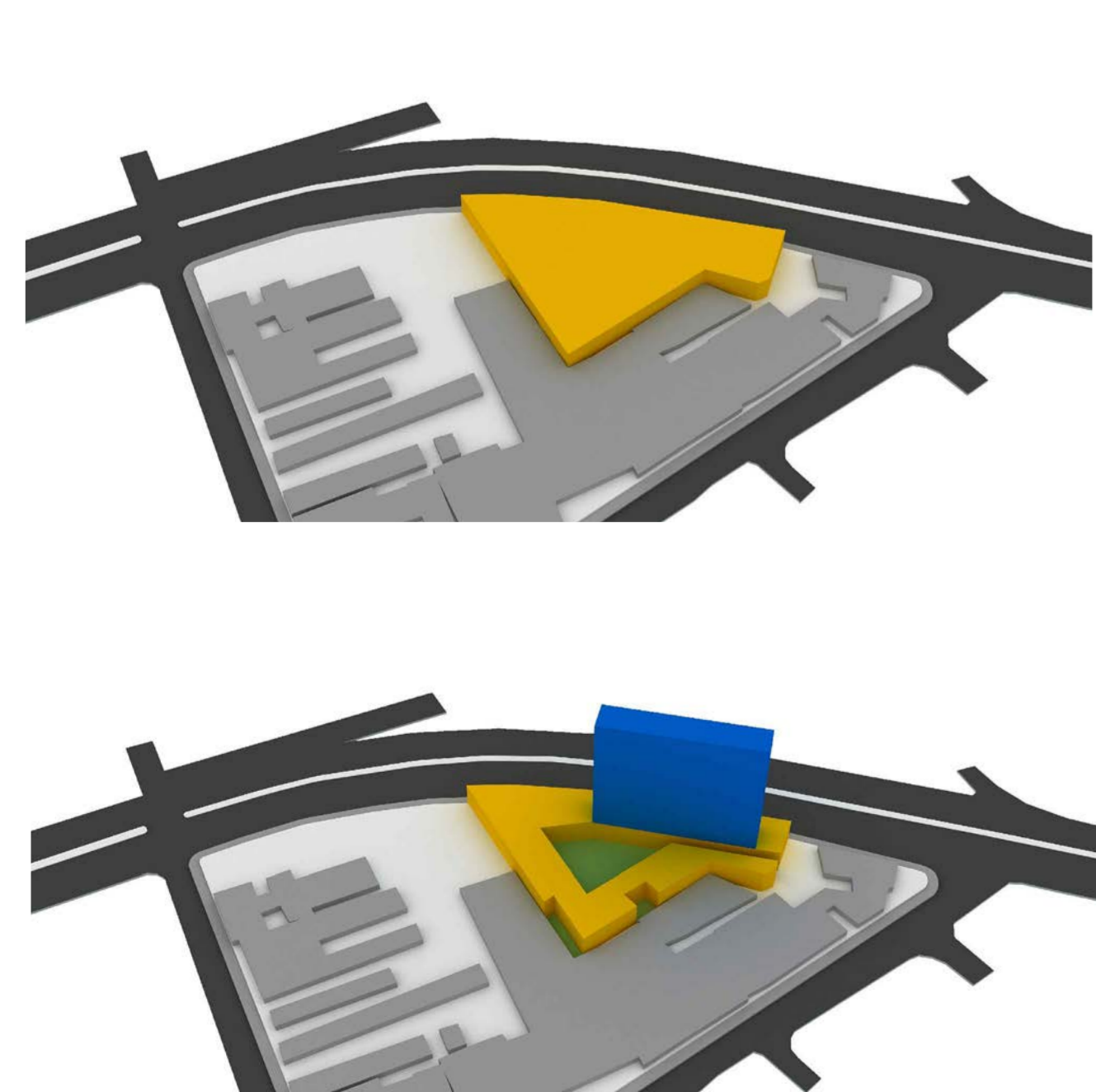


estacionamento em frente ao terreno

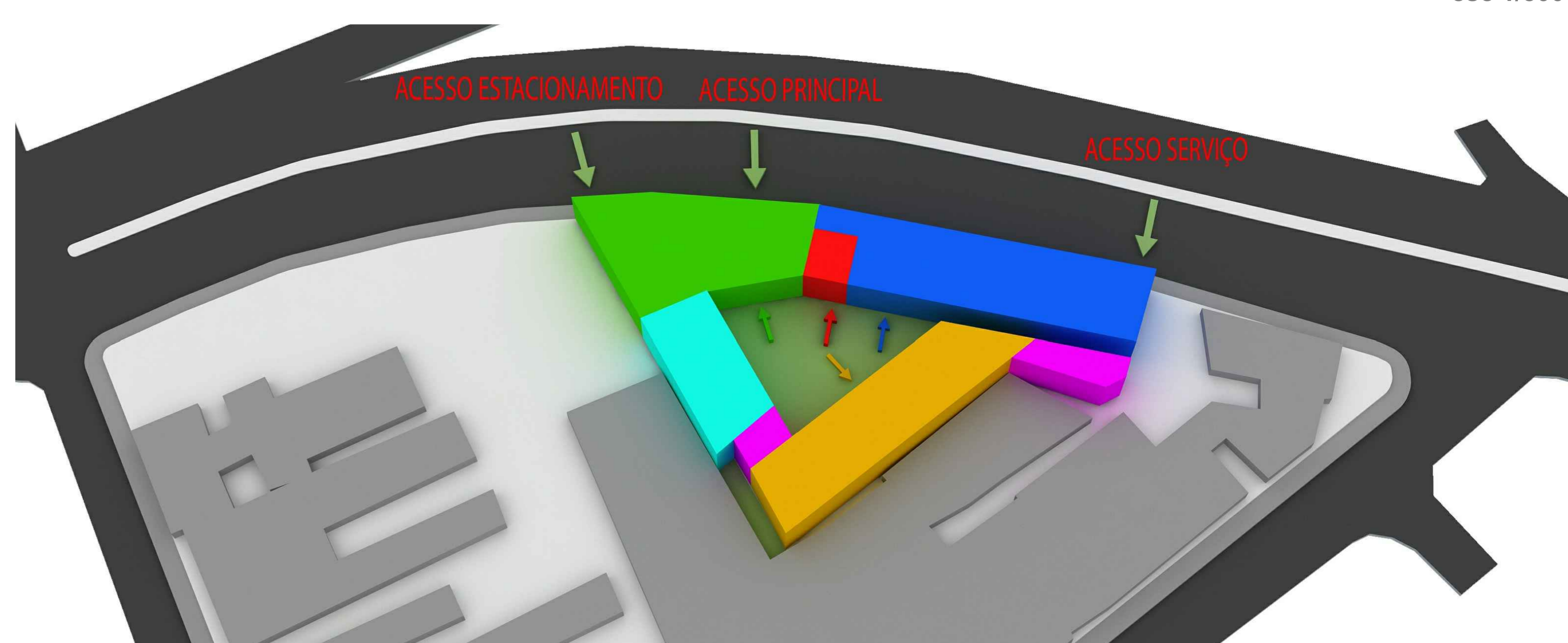
LEVANTAMENTO FOTOGRÁFICO DO LOCAL



IMPLANTAÇÃO  
esc 1/500

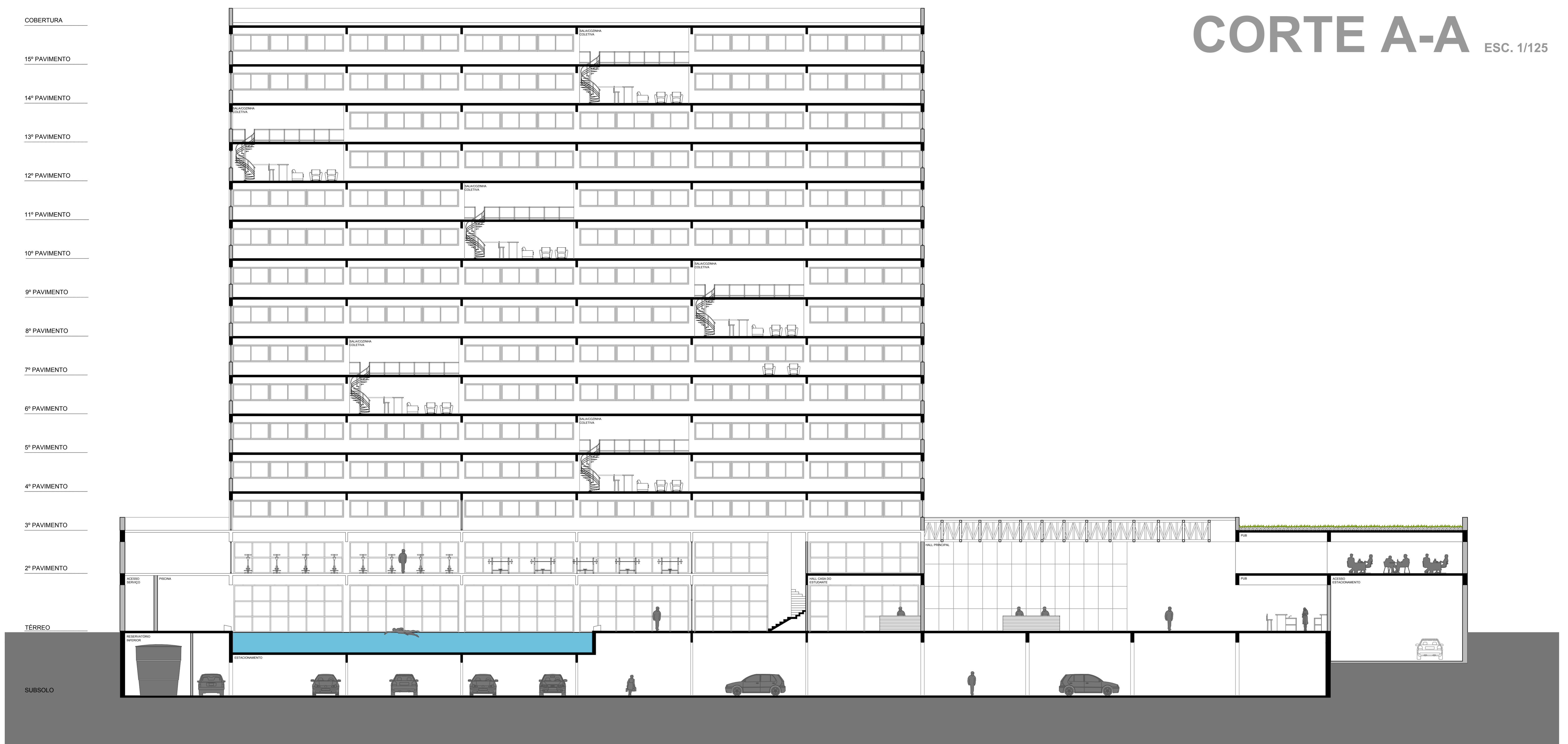


EVOLUÇÃO



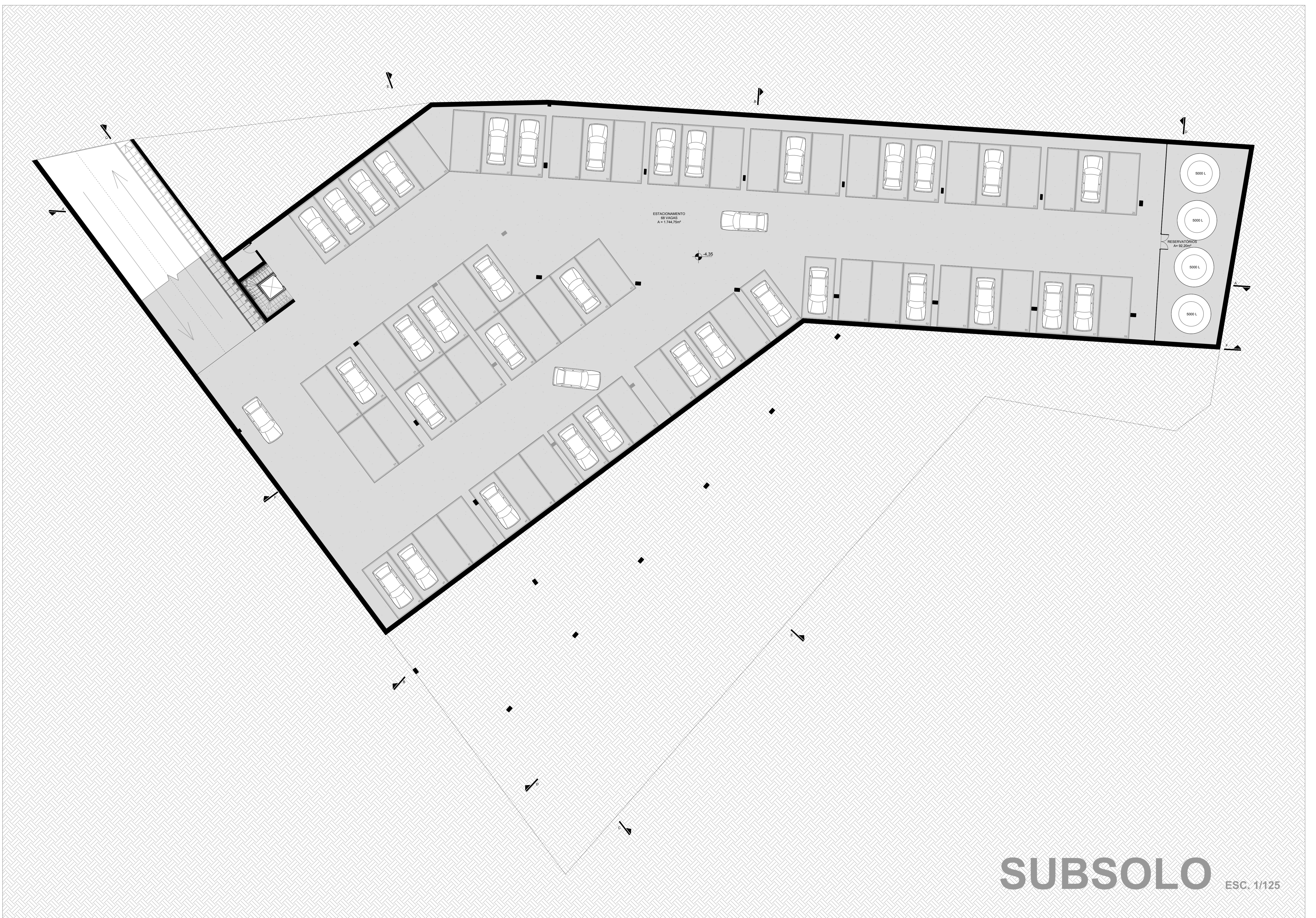
ZONEAMENTO

# CORTE A-A ESC. 1/125





**PLANTA 2º PAVIMENTO** ESC. 1/125



**SUBSOLO** ESC. 1/125

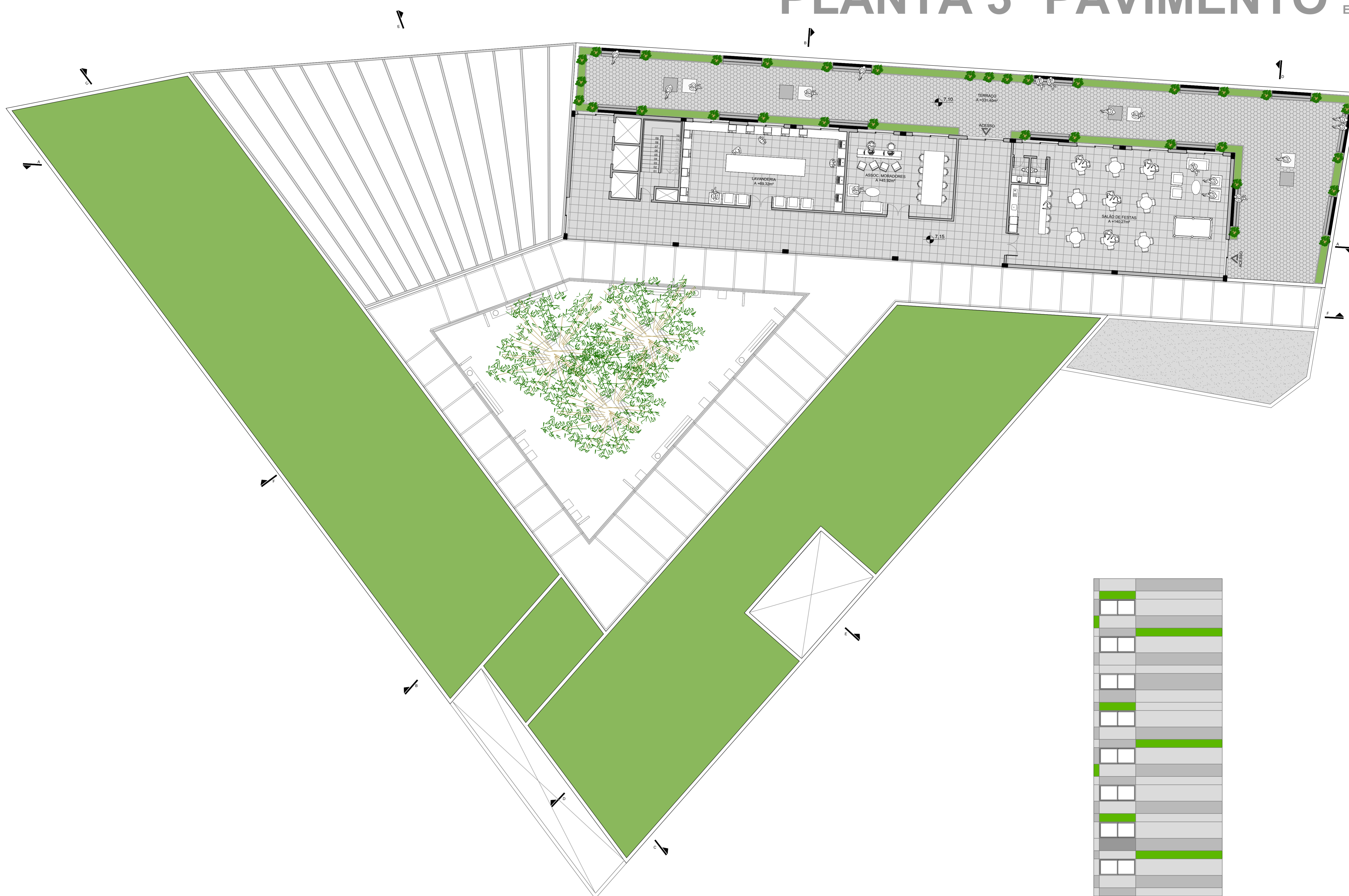
# CORTE F-F

ESC. 1/125



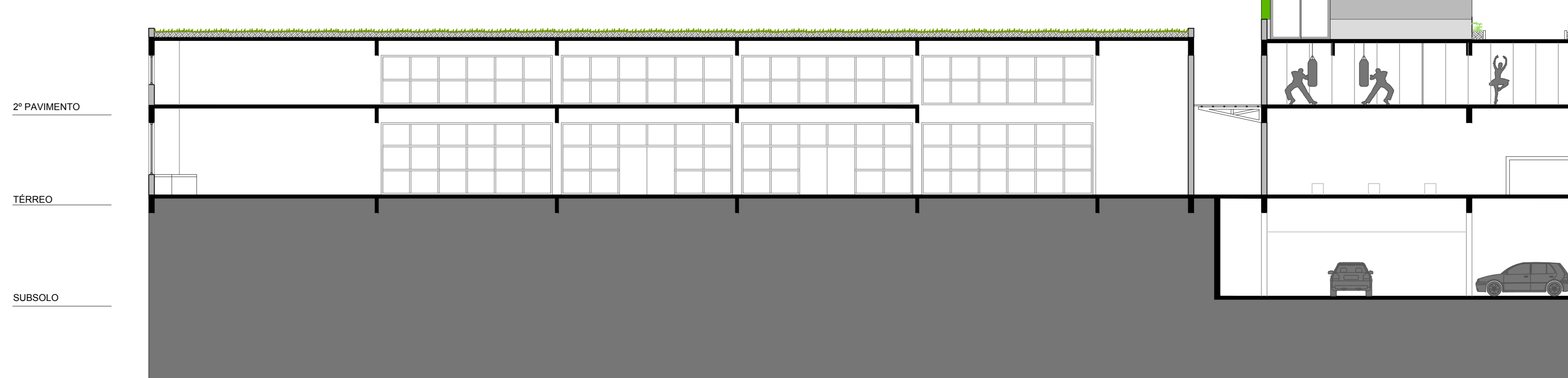
# PLANTA 3º PAVIMENTO

ESC. 1/125

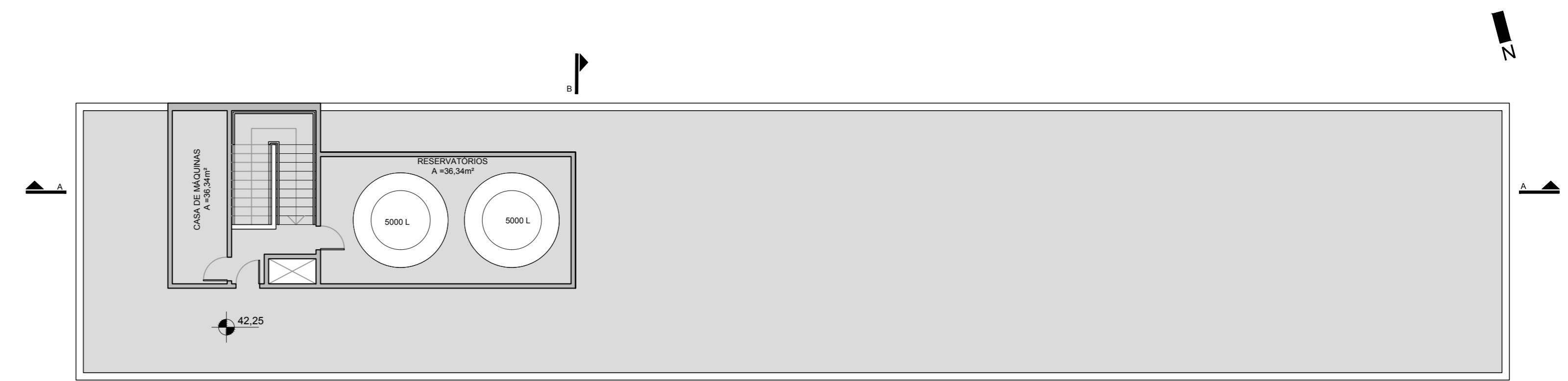


# CORTE D-D

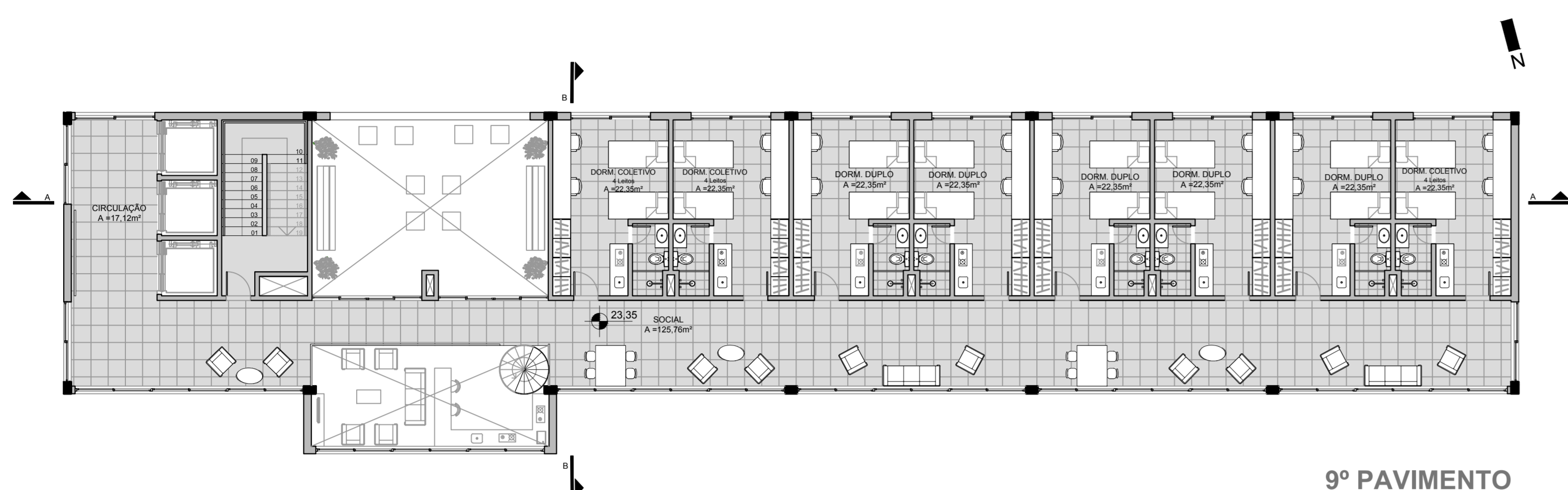
ESC. 1/125



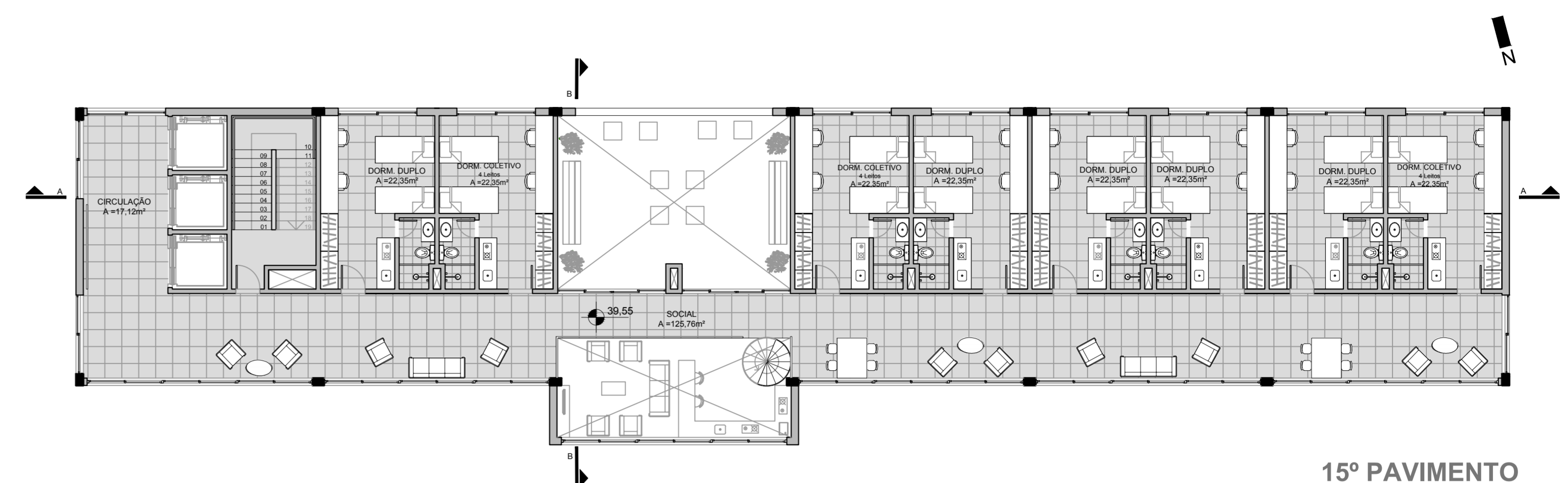
# PAVIMENTO TIPO ESC. 1/125



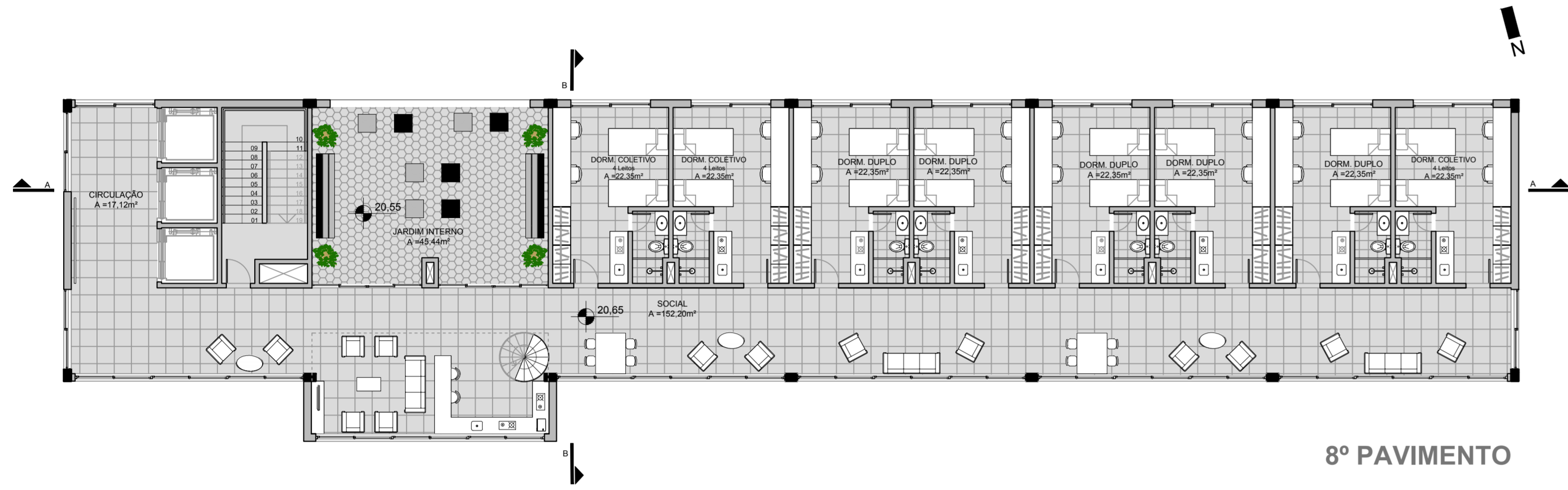
COBERTURA



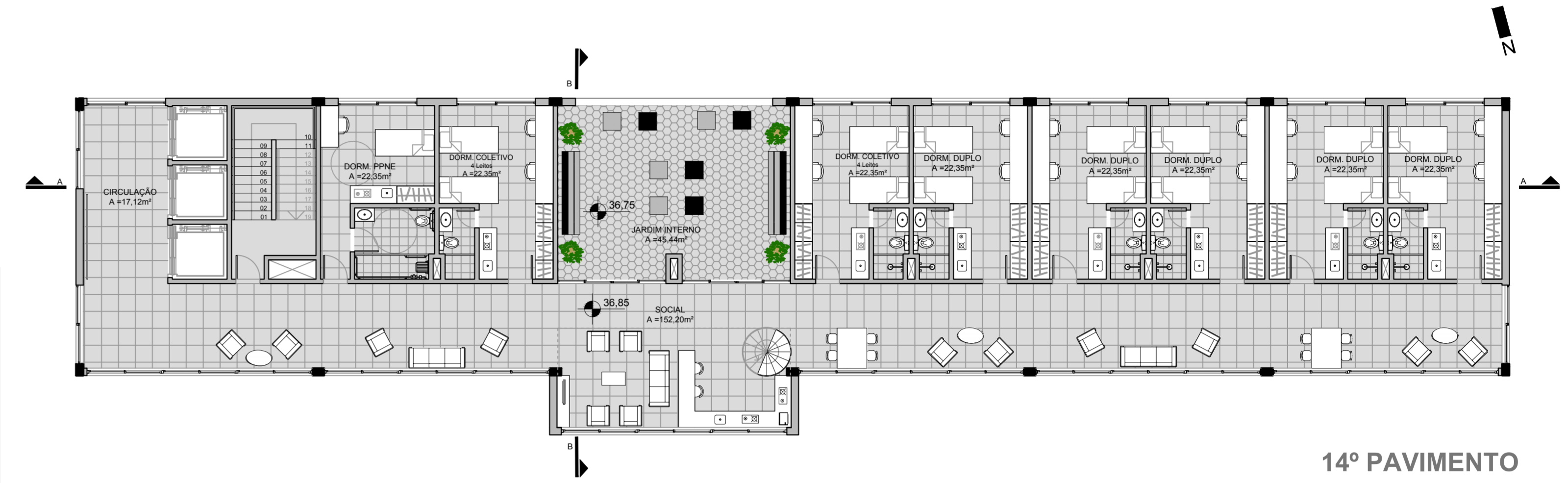
9º PAVIMENTO



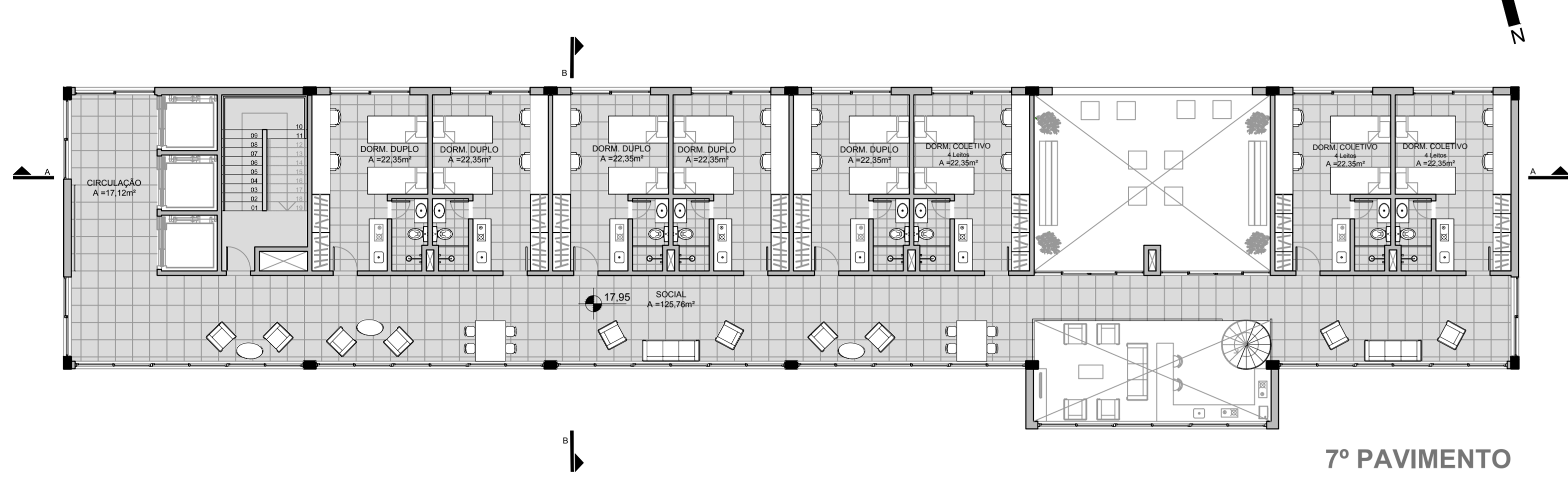
15º PAVIMENTO



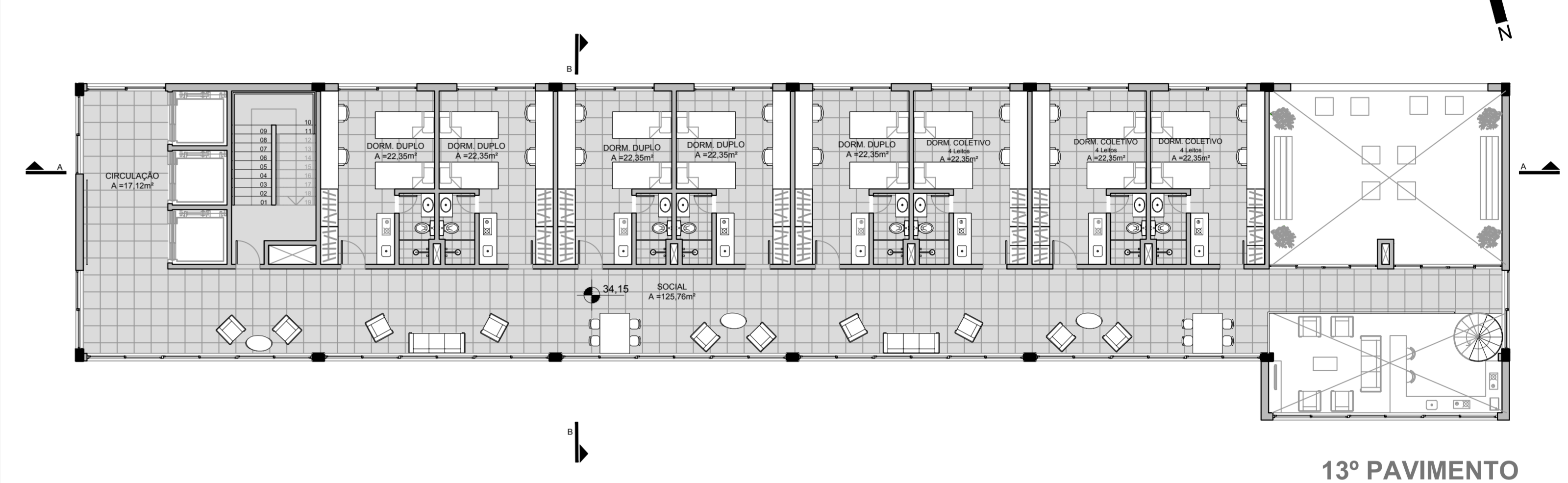
8º PAVIMENTO



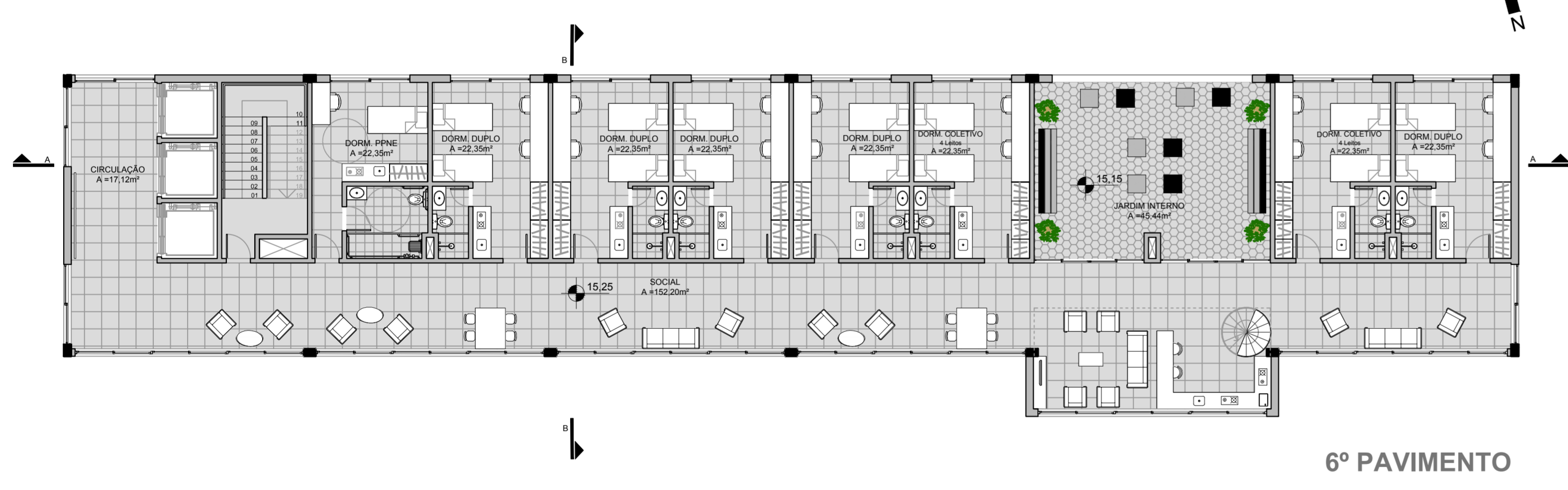
14º PAVIMENTO



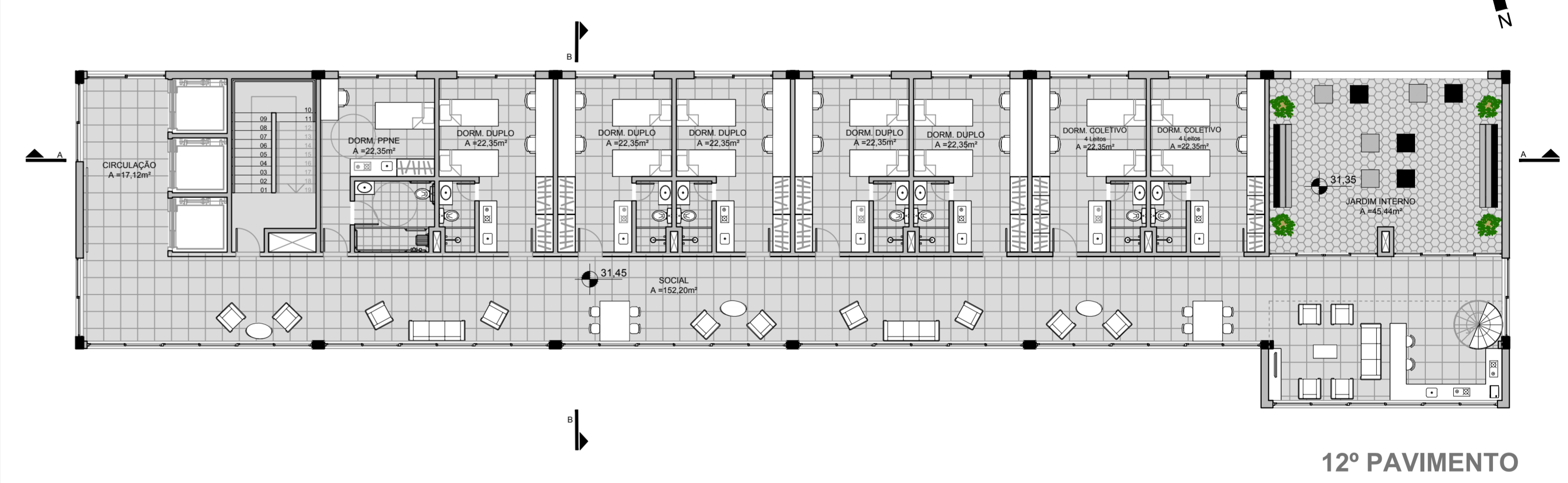
7º PAVIMENTO



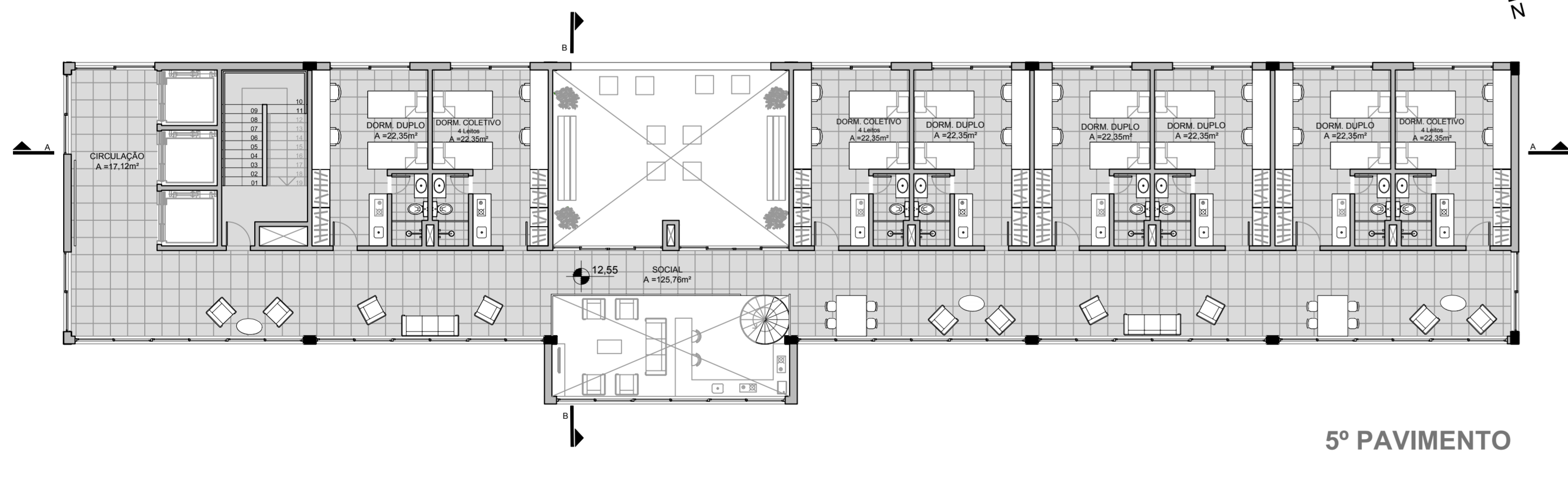
13º PAVIMENTO



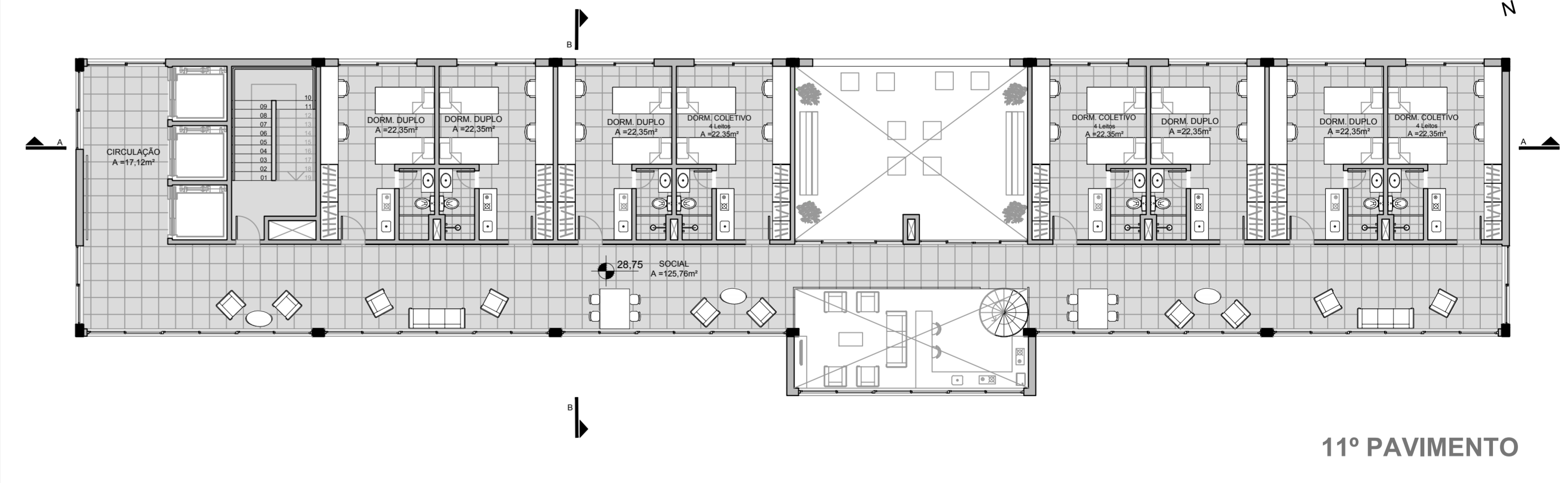
6º PAVIMENTO



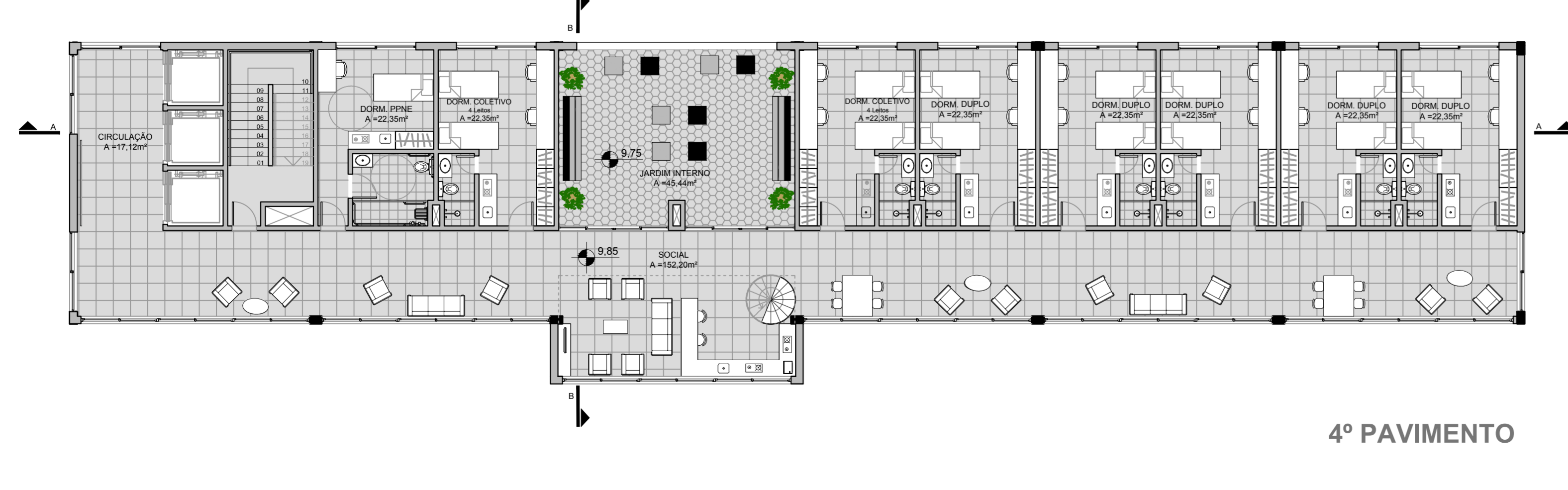
12º PAVIMENTO



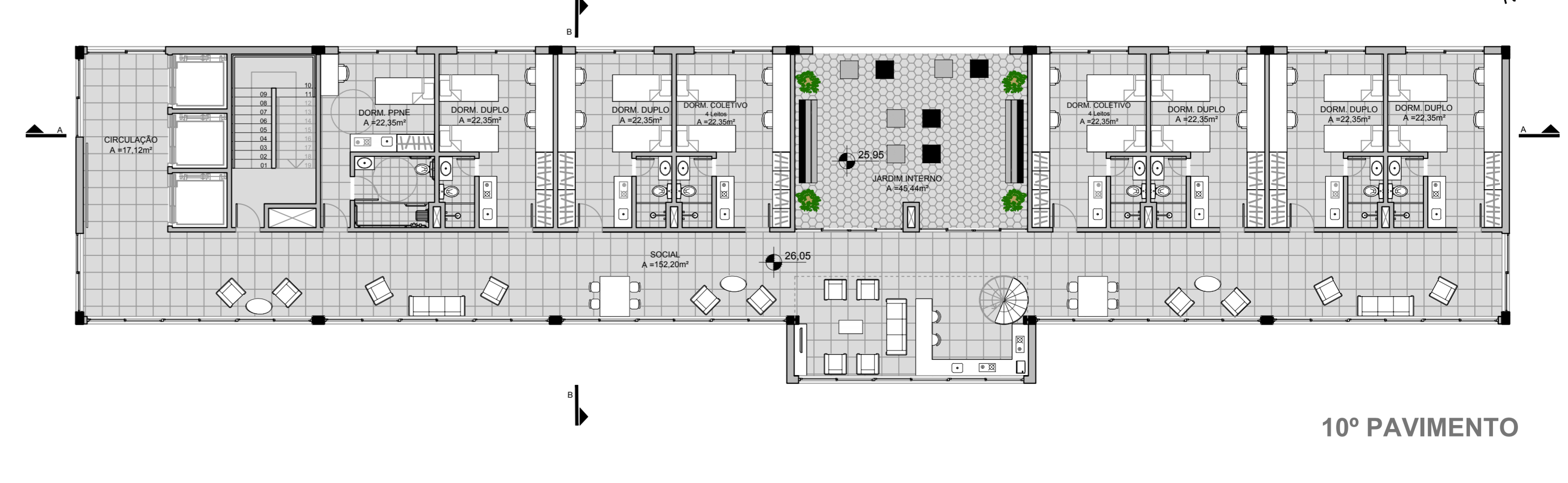
5º PAVIMENTO



11º PAVIMENTO



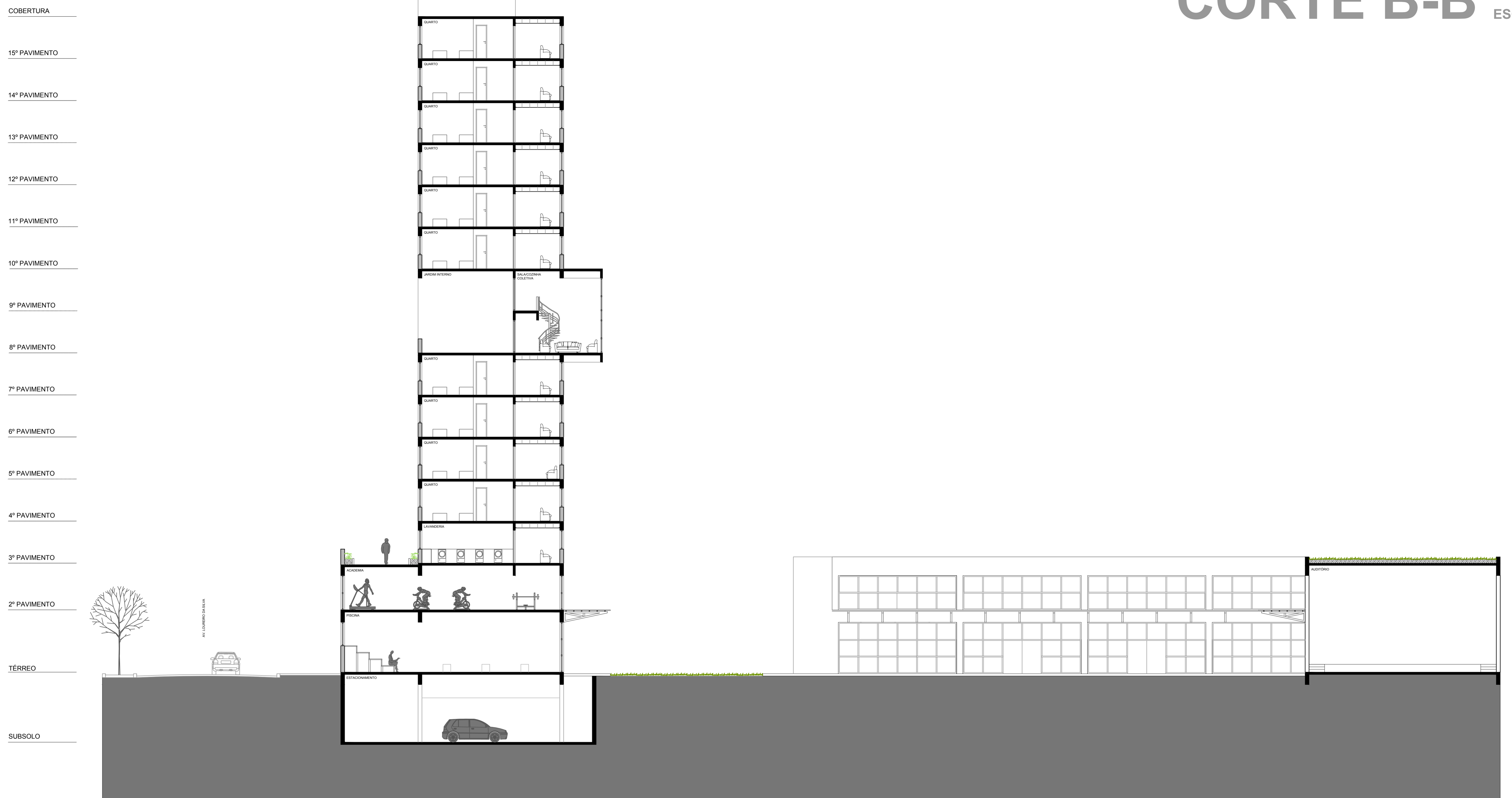
4º PAVIMENTO



10º PAVIMENTO

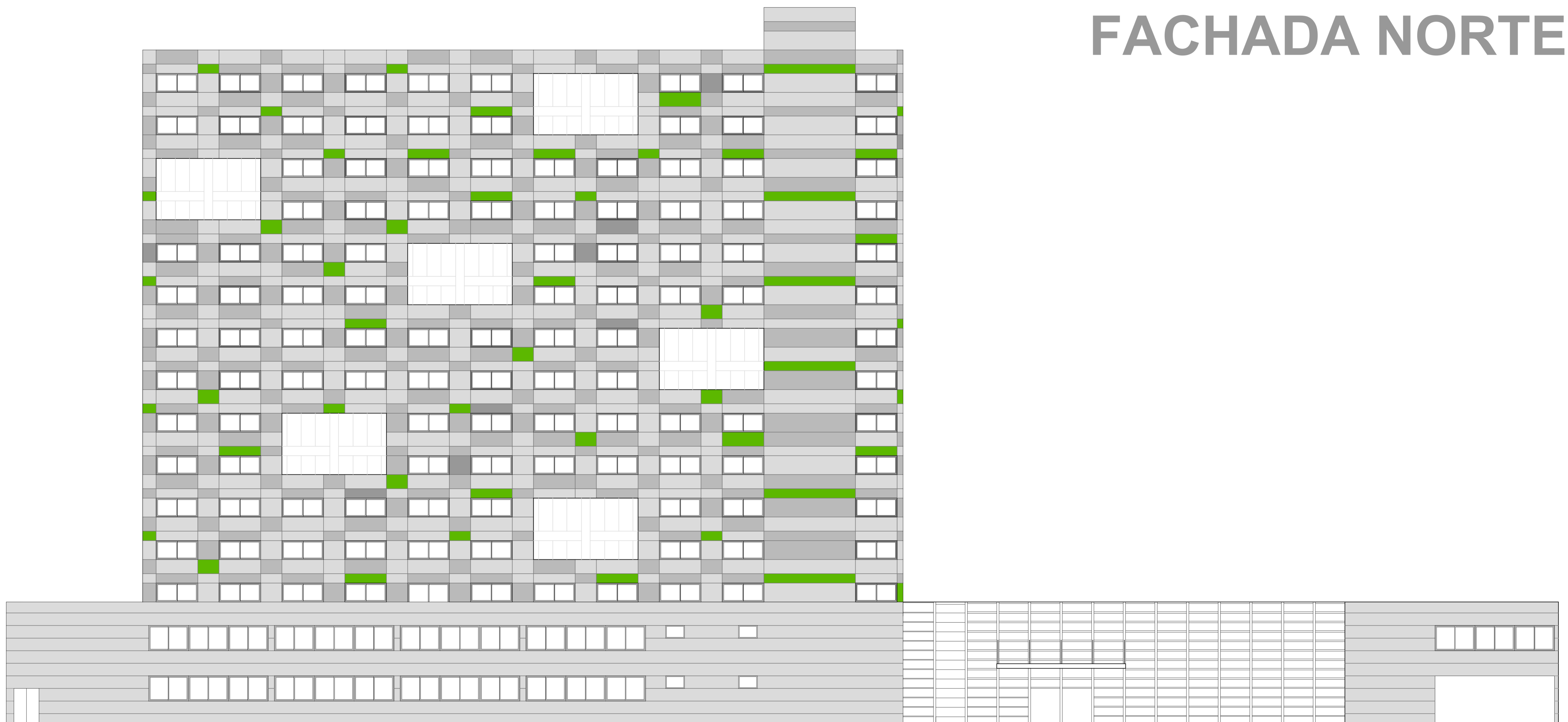
# CORTE B-B

ESC. 1/125



# FACHADA NORTE

ESC. 1/125



# CORTE E-E

ESC. 1/125





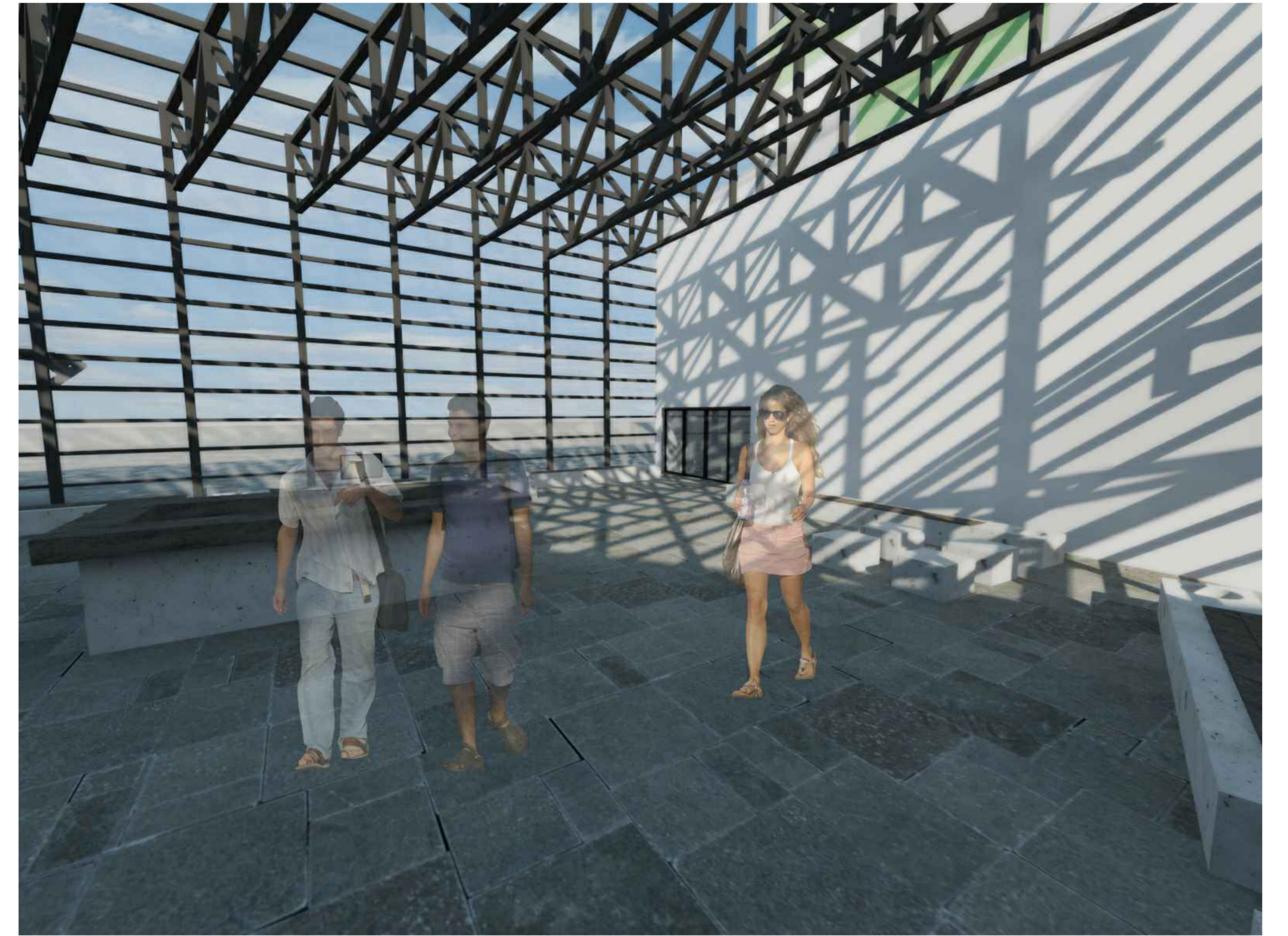
PERSPECTIVA PÁTIO INTERNO



PERSPECTIVA HALL



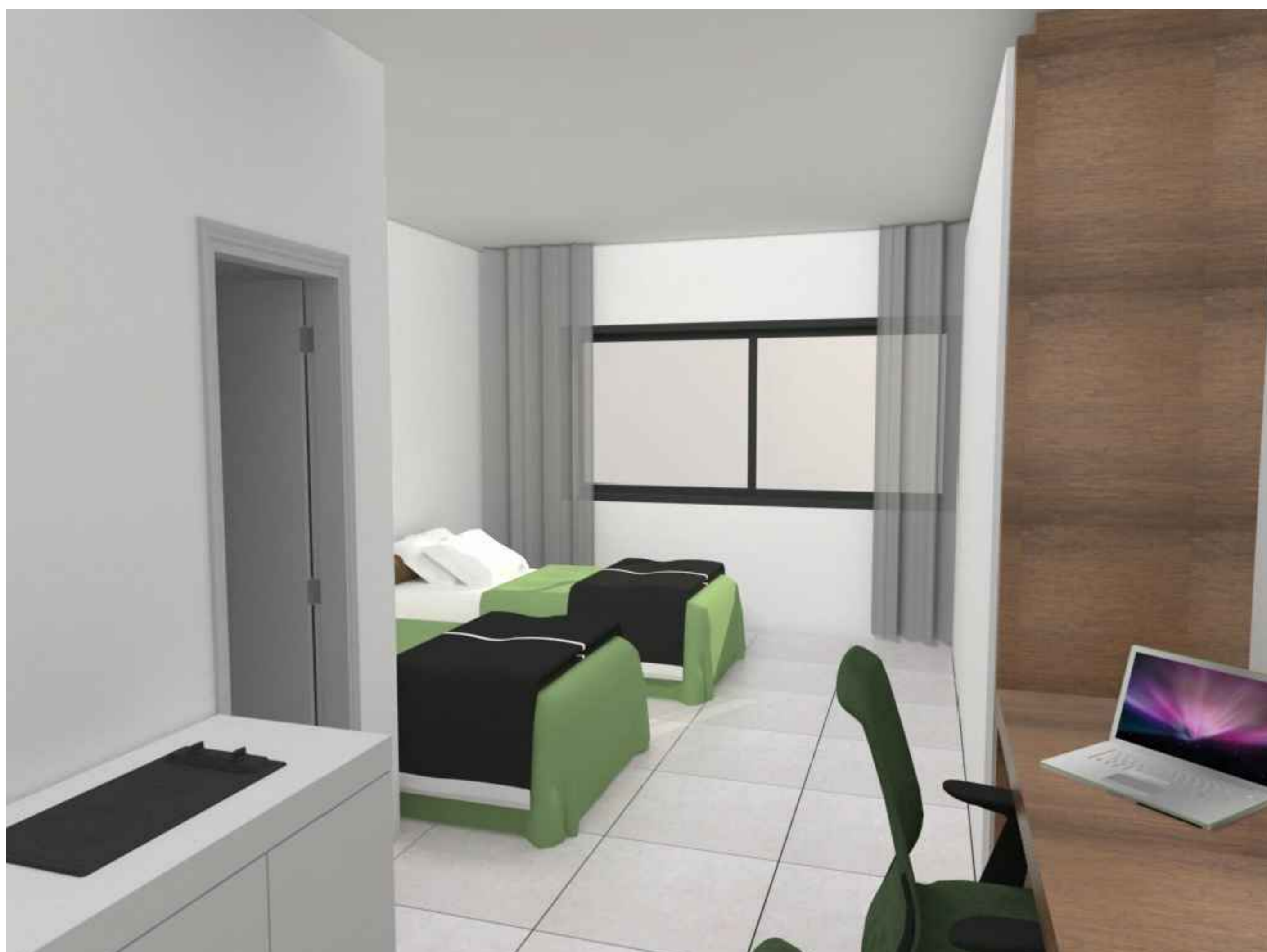
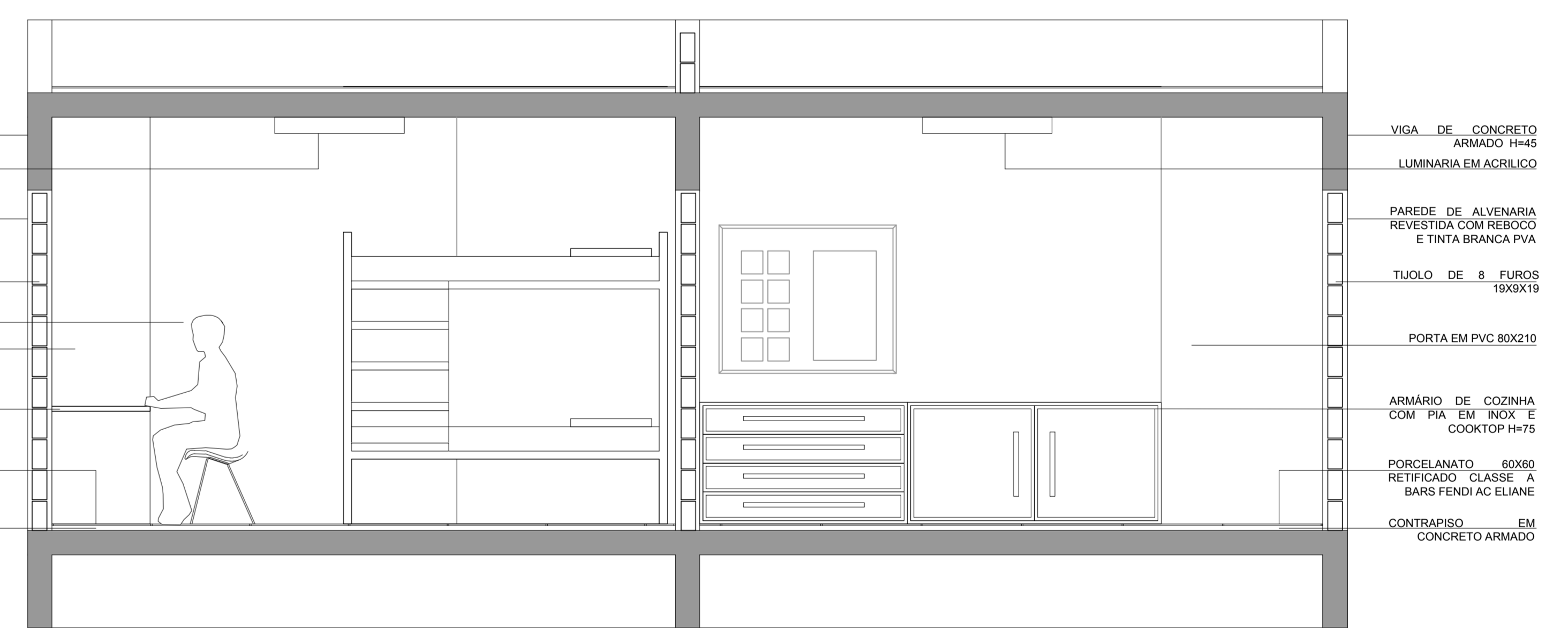
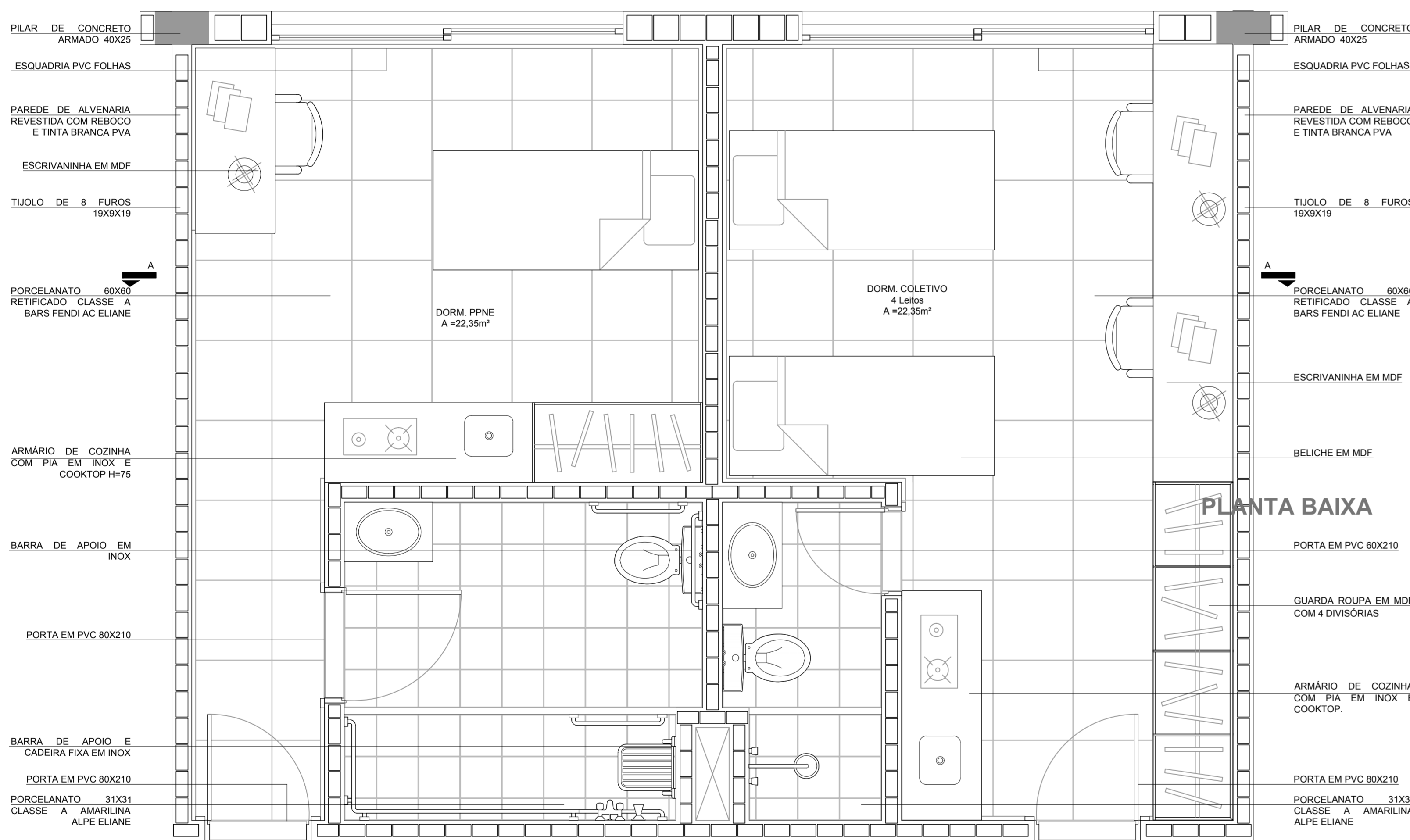
PERSPECTIVA PÁTIO INTERNO



PERSPECTIVA HALL

# SETOR AMPLIADO

ESC. 1/25



PERSPECTIVA DORMITÓRIO DUPLO



PERSPECTIVA DORMITÓRIO PPNE

