

# Asymmetric Effects of Monetary Policy in Brazil

▪ EDILEAN KLEBER DA SILVA BEJARANO ARAGÓN\*

▪ MARCELO SAVINO PORTUGAL\*\*

## RESUMO

*Neste trabalho, examinamos se os efeitos das ações de política monetária sobre o produto são assimétricos no Brasil. Para isto, estimamos modelos Markov-switching que permitem que choques positivos e negativos afetem a taxa de crescimento do produto de forma assimétrica nos estados de expansão e recessão econômica. Em geral, os resultados mostram que: i) os efeitos reais de choques monetários negativos são maiores do que os de choques positivos em uma expansão; ii) em uma recessão, os efeitos reais de choques positivos e negativos são iguais; iii) não há evidência de assimetria entre os efeitos de políticas monetárias contracíclicas; iv) não se pode afirmar que os efeitos de choques positivos (ou negativos) dependem da fase do ciclo econômico.*

## PALAVRAS-CHAVE

*política monetária, assimetrias, choques negativos e positivos, ciclo de negócios, modelos Markov-switching*

## ABSTRACT

*In this paper, we check whether the effects of monetary policy actions on output in Brazil are asymmetric. Therefore, we estimate Markov-switching models that allow positive and negative shocks to affect the growth rate of output in an asymmetric fashion in expansion and recession states. In general, results show that: i) the real effects of negative monetary shocks are larger than those of positive shocks in an expansion; ii) in a recession, the real effects of positive and negative shocks are the same; iii) there is no evidence of asymmetry between the effects of countercyclical monetary policies; and iv) it is not possible to assert that the effects of a positive (or negative) shock are dependent upon the phase of the business cycle.*

## KEYWORDS

*monetary policy, asymmetries, positive and negative shocks, business cycle, Markov-switching models*

## JEL CLASSIFICATION

*E52, E32, C32*

---

\* Professor of Economics at UFPB. Endereço para contato: Universidade Federal da Paraíba – CCSA – Departamento de Economia – Cid. Universitária – João Pessoa – PB – Brasil. CEP: 58059-900. Fone: (83)3216-7482. Email: eks\_cme@yahoo.com.br

\*\* Professor of Economics at UFRGS and CNPq researcher. E-mail: msp@ufrgs.br.  
(Recebido em setembro de 2007. Aceito para publicação em maio de 2008).

## 1 INTRODUCTION

In recent times, the literature on asymmetric real effects of monetary policy has focused essentially on two types of asymmetry: (1) asymmetry related to the direction of the monetary policy action; and (b) asymmetry related to the phase of the business cycle in place at the time at which this policy was adopted.<sup>1</sup> The asymmetry related to the direction of the monetary policy action is found in models that yield a convex aggregate supply curve due to a stronger nominal rigidity to reduce the price and/or wage levels.<sup>2</sup> In these models, positive monetary shock leads to a higher frequency of price adjustments, while a negative monetary shock produces a major effect on the output level of firms.<sup>3</sup> This implies that the real effects of a contractionary monetary policy are larger than those of an expansionary one. On the other hand, the asymmetry related to the phase of the business cycle may be observed in models with credit market frictions generated by asymmetric information between lenders and borrowers.<sup>4</sup> Since the amount of collaterals is smaller in a recession, the financial stance of economic agents is weaker and the supply of credit by commercial banks is smaller than during an expansion, and the external finance premium is higher in this phase of the business cycle. As a result, monetary policy shocks may have greater effects on output during a recession.

Several works have provided empirical evidence of different types of asymmetry in the effects of monetary policy on output. For example, Lemgruber (1980) points out that the real effects of a contractionary monetary policy are larger than those of an expansionary policy in Brazil. For the United States, Cover (1992), De Long and Summers (1988), Rhee and Rich (1995) and Karras and Stokes (1999) also found that negative monetary shocks had larger real effects than did positive shocks. Garcia and Schaller (2002), Dolado and Maria-Dolores (2001, 2006), Peersman and Smets (2001) and Kaufmann (2002) assessed asymmetry in the business cycle phase and found evidence that monetary policy actions have stronger effects on output in a recession in the U.S., Austrian, German, Spanish, Italian, French, and Belgian economies.

---

1 There exists a third type of asymmetry, which is related to large and small monetary shocks (BALL; ROMER, 1989). It was not within the scope of the present paper to look into this type of asymmetry.

2 The Keynesian model with downward nominal wage rigidity and the asymmetric adjustment cost models analyzed by Caballero and Engel (1993), Tsiddon (1993) and Ball and Mankiw (1994) are included in this class of models.

3 Positive monetary shocks can be defined as unanticipated increases in money supply or unanticipated decreases in the interest rate of the monetary policy. Conversely, negative monetary shocks are unanticipated decreases in money supply or unanticipated increases in the interest rate of the monetary policy.

4 Gertler and Hubbard (1988), Bernanke and Gertler (1989, 1995) provide an in-depth analysis of credit market imperfections.

The major aim of the present work is to investigate whether the effects of monetary policy on output are asymmetric in Brazil. Specifically, we seek to answer the following questions: i) in a given state of the business cycle, are the real effects of a contractionary monetary policy different from the effects of an expansionary one? ii) do the real effects of a countercyclical monetary policy depend on the state of the business cycle in place at the time at which the policy was implemented? iii) are the real effects of a contractionary (or expansionary) policy different between the phases of the business cycle?

In order to achieve our goal, we first measured monetary policy shocks and then we built positive and negative monetary shock series. Thereafter, we assessed the different types of asymmetry by extending the Markov-switching model developed by Hamilton (1989). In particular, we considered a specification of the Markov-switching model that allows positive and negative shocks to asymmetrically affect the rate of GDP growth during expansions and recessions. To check whether the real effects of monetary shocks are asymmetric, we performed a set of Wald tests and imposed different restrictions on the estimated parameters.

An important aspect of the analysis of monetary policy effects is the choice of the monetary policy instrument and consequently of the measure of policy actions. We chose the Selic rate as policy instrument because we believe this variable properly shows the main monetary policy actions taken by the Central Bank in the post-Real Plan period. After that, we measured monetary policy actions based on the innovations of a vector autoregressive model in which the Selic rate is included as one of the system variables. To check the robustness of results, we estimated the Markov-switching model using structural monetary shocks obtained from the estimation of different VAR model specifications and the Selic rate variation as a monetary policy instrument.

Two were our contributions to the existing empirical literature. First, we assessed the asymmetry related to the direction of the shock and also the asymmetry during expansions and recessions. Several macroeconomists tend to conflate these two types of asymmetry, thinking that monetary policy actions are typically countercyclical, in such a way that an analysis of the asymmetry between an expansionary and contractionary policy allows inferring on the asymmetry between expansions and recessions. However, Kaminsky *et al.* (2004) provide a body of evidence suggesting that monetary policy is procyclical in emerging economies (e.g.: Brazil).

Our second contribution consists in providing evidence of asymmetric real effects of monetary policy in Brazil for the period following the Real Plan. Many authors, such as Moreira *et al.* (1998), Rabanal and Schwartz (2001), Minella (2003), Cysne

(2005), Céspedes *et al.* (2005) and Fernandes and Toro (2005) have provided empirical evidence that monetary policy actions affect the real side of the Brazilian economy. Nevertheless, none of these studies considered that such effects were likely to be asymmetric in terms of economic conditions and/or nature of the policy action.

Besides the introduction, this paper is organized into four sections. Section 2 outlines the empirical model and the statistical tests we are going to use to assess the different types of asymmetry in the real effects of the monetary policy. Section 3 describes the time series used. Section 4 presents and analyzes the results. Section 5 concludes.

## 2 EMPIRICAL METHODOLOGY

### 2.1 Econometric Model

To check whether the real effects of monetary policy are asymmetric, we extend Hamilton's (1989) model, which allows positive and negative monetary shocks to asymmetrically affect the output growth rate between expansions and recessions. This model has the following advantages: i) the selection of states is jointly determined with the estimation of the model parameters; ii) a greater relative weight is placed upon the observations that correspond more clearly to this state when estimating the coefficients of a given state; iii) the model allows jointly assessing the different types of asymmetric effects of monetary policy on output.

A more general specification of the Markov-switching model is given by:

$$\begin{aligned} \Delta y_t - \mu_{s_t} &= \phi_1 (\Delta y_{t-1} - \mu_{s_{t-1}}) + \dots + \phi_p (\Delta y_{t-p} - \mu_{s_{t-p}}) + \\ &\quad \gamma_{s_{t-1},1}^- \mathbf{u}_{t-1}^- + \dots + \gamma_{s_{t-p},p}^- \mathbf{u}_{t-p}^- + \gamma_{s_{t-1},1}^+ \mathbf{u}_{t-1}^+ + \dots + \gamma_{s_{t-p},p}^+ \mathbf{u}_{t-p}^+ + \varepsilon_t \\ \varepsilon_t &\sim i.i.d. N(0, \sigma^2) \\ \mu_{s_t} &= \mu_0 (1 - s_t) + \mu_1 s_t \\ \gamma_{s_{t-1},1}^- &= \gamma_{0,1}^- (1 - s_{t-1}) + \gamma_{1,1}^- s_{t-1} \\ \gamma_{s_{t-1},1}^+ &= \gamma_{0,1}^+ (1 - s_{t-1}) + \gamma_{1,1}^+ s_{t-1} \end{aligned} \tag{1}$$

where  $\Delta y_t$  is the growth rate of the real Brazilian GDP,  $\mu_{S_t}$  is the mean state-dependent growth rate of output,  $u_{t-i}^-$  is a negative monetary shock,  $\gamma_{S_{t-i},i}^-$  is the state-dependent coefficient measuring the response of  $\Delta y_t$  to a negative monetary shock,  $u_t^+$  is a positive monetary shock and  $\gamma_{S_{t-i},i}^+$  is the state-dependent coefficient measuring the response of  $\Delta y_t$  to a positive monetary shock. The state variable  $S_t$  supposedly assumes value 0 when the economy is in a recession and value 1 when it is in an expansion. Thus, the model parameters in a recession are  $\mu_0$ ,  $\gamma_{0,i}^-$  and  $\gamma_{0,i}^+$ , whereas, in an expansion, these parameters are given by  $\mu_1$ ,  $\gamma_{1,i}^-$  and  $\gamma_{1,i}^+$ . The generating process of regimes  $S_t$  involves a first-order Markov-switching process and two states, whose supposedly ergodic and irreducible transition probability matrix is given by:

$$P = \begin{bmatrix} p & 1-q \\ 1-p & q \end{bmatrix} \quad (2)$$

where

$$\begin{aligned} p &= \Pr[S_t = 0 | S_{t-1} = 0] \\ 1-p &= \Pr[S_t = 1 | S_{t-1} = 0] \\ q &= \Pr[S_t = 1 | S_{t-1} = 1] \\ 1-q &= \Pr[S_t = 0 | S_{t-1} = 1] \end{aligned} \quad (3)$$

We assume transition probabilities to be constant in time and determined by the following logistic functions:

$$p = \Pr[S_t = 0 | S_{t-1} = 0] = \frac{\exp(\theta_0)}{1 + \exp(\theta_0)} \quad (4)$$

$$q = \Pr[S_t = 1 | S_{t-1} = 1] = \frac{\exp(\theta_1)}{1 + \exp(\theta_1)} \quad (5)$$

where  $\theta_0$  and  $\theta_1$  are unrestricted parameters. Based on the probabilities in (4) and (5), one can calculate the mean duration ( $d_{st}$ ) of economic recession and expansion regimes by using expressions  $1/(1-p)$  and  $1/(1-q)$ , respectively. The duration of each regime can be different, but it will be constant in time since the transition probability matrix is fixed.<sup>5</sup>

<sup>5</sup> Model (1)-(2) is estimated by the use of the filter described in detail in Hamilton (1989).

### 2.1.1 Determination of the Number of Regimes

For the specification of the Markov-switching model, it is important to know whether it provides a more adequate characterization of data comparatively to a model with constant coefficients. A formal procedure is to use the likelihood ratio (LR) statistic to test the null hypothesis that a one-regime process generates data that run counter to the alternative hypothesis that these data are generated by a two-regime model. However, this test is problematic because regularity conditions are not maintained under the null hypothesis due to the presence of nuisance parameters and singularity of the information matrix (HANSEN, 1992). An alternative to the formal test of hypothesis is to choose the number of Markov states based on information criteria, such as Akaike (AIC), Schwarz (SC), Hannan-Quinn (HQ) and Markov-switching criterion (MSC).<sup>6</sup>

In this paper, we use three procedures to check whether the Markov-switching model is more appropriate than the linear model. The first two use the AIC and MSC, expressed by:

$$AIC = \frac{-2L(\Delta y_t, \hat{\lambda})}{T} + \frac{2N}{T} \quad (6)$$

$$MSC = -2L(\Delta y_t, \hat{\lambda}) + \sum_{l=0}^1 \frac{\hat{T}_l(\hat{T}_l + 2K)}{\hat{T}_l - 2K - 2} \quad (7)$$

where  $L(\Delta y_t, \hat{\lambda})$  is the value of the log-likelihood function in  $\lambda = \hat{\lambda}$ ,  $N$  is the number of parameters of the model,  $T$  is the number of observations,  $T_0 = \sum_t \Pr(S_t = 0 | I_T)$ ,  $T_1 = \sum_t \Pr(S_t = 1 | I_T)$ ,  $\Pr(S_t = s_t | I_T)$  is the smoothed probability of regime  $s_t$  (0,1) and  $K$  is the number of explanatory variables plus the constant term. The third procedure consists of the approximation to the asymptotic distribution of the LR statistics proposed by Ang and Bekaert (1998). As shown by these authors, the asymptotic distribution of the LR statistic between 1 and 2 regimes can be approximated by a chi-square distribution, where the number of degrees of freedom is given by the number of nuisance parameters of the two-regime model plus the number of linear restrictions imposed on the one-regime model by the two-regime model.

<sup>6</sup> Psaradakis and Spagnolo (2003) show that the selection process based on AIC succeeds in determining the correct number of states if the sample size and the changes in parameters are not too small. Smith *et al.* (2006) demonstrate that the MSC criteria have a good performance in regression and autoregressive models, with one and several states in large and small samples and with low and high noise.

## 2.2 Symmetry Tests for the Real Effects of Monetary Shocks

After estimating model (1), we tested the possible asymmetries in the real effects of the monetary policy by imposing restrictions on the sum of parameters  $\gamma_{S_i,i}^j$ , where  $j=-,+$  and  $i=1,\dots,p$ . In particular, we test the following null hypotheses of symmetry:

symmetry in the effects of positive and negative monetary shocks

$$H_0 : \sum_{i=1}^p \gamma_{0,i}^- = \sum_{i=1}^p \gamma_{0,i}^+ \quad (8)$$

$$H_0 : \sum_{i=1}^p \gamma_{1,i}^- = \sum_{i=1}^p \gamma_{1,i}^+ \quad (9)$$

symmetry in the effects of countercyclical monetary shocks

$$H_0 : \sum_{i=1}^p \gamma_{0,i}^+ = \sum_{i=1}^p \gamma_{1,i}^- \quad (10)$$

symmetry in the effects of monetary shocks between recessions and expansions

$$H_0 : \sum_{i=1}^p \gamma_{0,i}^- = \sum_{i=1}^p \gamma_{1,i}^- \quad (11)$$

$$H_0 : \sum_{i=1}^p \gamma_{0,i}^+ = \sum_{i=1}^p \gamma_{1,i}^+ \quad (12)$$

The statistical significance of the restrictions imposed on the model is assessed by the usual Wald test. Under null hypotheses (8) through (12), the Wald test has a chi-square distribution with 1 degree of freedom.

## 3 DATA

Model (1) is estimated using monthly frequency data for the period between July 1995 and August 2006. As the monthly data for the real GDP are not available for the study period, we used the seasonally adjusted monthly industrial production index as proxy for the real GDP and then calculated the growth rate of output ( $\Delta y_t$ )

as  $\ln(y_t/y_{t-1}) \times 100$ , where  $\ln$  denotes the natural logarithm. The series of the seasonally adjusted industrial production index was obtained from IBGE.<sup>7</sup>

The series of monetary shocks ( $u_t$ ) is obtained through the estimation of a vector autoregressive (VAR) model of order  $p$ . We estimate the VAR model using three variables: i) the natural logarithm of the industrial production index; ii) the monthly inflation rate defined by  $\ln(IPCA_t/IPCAt_{-1}) \times 100$ , where IPCA is the Brazilian consumer price index calculated by IBGE; iii) monthly overnight interest rate (SELIC), regarded as a monetary policy instrument. The data used were obtained from the Central Bank of Brazil and from IBGE. The VAR is estimated using monthly data for the period between January 1995 and August 2006. We followed the recommendation of Sims (1980) and Doan (1992) and included all the variables in levels in the VAR model.<sup>8</sup>

The selection of order  $p$  was based on the multivariate AIC, SC and HQ criteria and also on the results of multivariate LM tests for autocorrelation of the system residuals, White test for the heteroskedasticity of system residuals and of each equation, LM-ARCH test for autoregressive conditional heteroskedasticity (ARCH) in the residuals of each equation and the Jarque-Bera (JB) test for normality of residuals. Given that the VAR(1) through VAR(4) models present autocorrelation and/or heteroskedasticity problems, we decided to use VAR(5) in order to obtain the monetary shock series ( $u_t$ ).

The residuals of the Selic rate equation do not necessarily represent a true monetary shock, since they can be correlated with the residuals of other equations in the VAR model. Thus, to estimate structural monetary shocks, we followed the recursive identification framework proposed by Sims (1980) – Choleski's orthogonalization. The ordering of variables in the VAR model was output, inflation, and Selic rate. Since monthly data are used, it is reasonable to assume that the output and inflation rate are not contemporaneously affected by the Selic rate. The imposition that the monetary policy reacts contemporaneously to output shocks and to shocks to the inflation rate is quite arguable since the data on inflation and output are made publicly available with some delay. Nevertheless, it is plausible to assume that by deciding on the value of the Selic rate in a given month the Central Bank has access to some current indicators of aggregate output and inflation.

7 IBGE – Brazilian Institute of Geography and Statistics.

8 Sims *et al.* (1990), Hendry (1996) and Bernanke and Mihov (1997) underscore that the specification of the VAR model with the variables in levels yields consistent estimates regardless of the existence of a cointegration relationship, where the specification in the first differences is inconsistent if the variables are cointegrated.



After obtaining the structural monetary shock series ( $u$ ), the next step involved obtaining different types of the shocks taken into consideration in model (1). We followed Cover (1992) and obtained the series of positive and negative monetary shocks using the following definitions:

$$\begin{aligned} u_t^+ &= \min(u_t, 0) \\ u_t^- &= \max(u_t, 0) \end{aligned} \quad (13)$$

where  $u_t^+$  is a positive monetary shock and  $u_t^-$  is a negative monetary shock.

To check the robustness of results, we did two exercises. The first one was obtaining  $u_t$  from the estimation of VAR models with different variables and from the ordering of variables in the system. Table 2 shows the characteristics of the estimated specifications. In the first specification, we assume that the Selic rate reacts with delay to shocks on output and inflation and that monetary shocks contemporaneously affect output and prices. In specifications 2 and 3, we measured inflation using the IGP-DI (General Price Index – Internal Supply). In order to capture the effects of external restrictions on monetary policy decisions, specifications 4 through 7 include the natural logarithm of the nominal exchange rate (average buying price) and a dummy variable (Desval) that assumes value 1 in the floating exchange rate period (1999:1-2006:8). Finally, we estimated VAR models for subsamples 1995:1-1998:12 and 1999:1-2006:8. External restrictions were captured by the inclusion of the natural logarithm of international reserves (concept of liquidity) in the first subsample and of the exchange rate in the second subsample.

TABLE 1 – ESTIMATED SPECIFICATIONS OF THE VAR MODEL

Specification	Variables	Ordering	p
1	Y, IPCA, Selic	Selic, Y, IPCA	5
2	Y, IGP-DI, Selic	Y, IGP-DI, Selic	5
3	Y, IGP-DI, Selic	Selic, Y, IGP-DI	5
4	Y, IPCA, Selic, Exchange rate	Y, IPCA, Exchange rate, Selic	5
5	Y, IGP-DI, Selic, Exchange rate, Desval	Y, IGP-DI, Exchange rate, Selic	5
6	Y, IPCA, Selic, Exchange rate, Desval	Exchange rate, Selic, Y, IPCA	5
7	Y, IGP-DI, Selic, Exchange rate, Desval	Exchange rate, Selic, Y, IGP-DI	5
	Y, IPCA, Selic, Reserves	Y, IPCA, Reserves, Selic;	1
8	Y, IPCA, Selic, Exchange rate	Y, IPCA, Exchange rate, Selic	2
	Y, IGP-DI, Selic, Reserves	Y, IGP-DI, Reserves, Selic	1
9	Y, IGP-DI, Selic, Exchange rate	Y, IGP-DI, Exchange rate, Selic	2

In the second exercise, we used the variation in the Selic rate as an alternative method to measure monetary policy. This variable is not appropriate for measuring monetary policy shocks since it is partially endogenous. However, its use is acceptable given that the monetary shocks detected in the VAR model are generated regressors in (1). As pointed out by Pagan (1984), the presence of generated regressors may imply inconsistent standard deviations of the estimated parameters, as well as of the tests based on these standard deviations. Therefore, the use of a monetary policy instrument that is not a generated regressor is an important way to test the robustness of results. Since we considered the variation in the Selic rate a monetary policy measure, the negative “monetary shock” series (positive variations in the interest rate) and the positive ones (negative variations in the interest rate) were obtained according to the definitions described in (13).

#### 4 RESULTS

In this section, we report the results of the Markov-switching models estimated to check whether the effects of the monetary policy on output are asymmetric. All estimates were made using the Optimum procedure of the Gauss software. The numerical optimization was made using the BFGS (Broyden, Fletcher, Goldfarb and Shanno) algorithm described in Gill *et al.* (1981).

A common difficulty in estimating Markov-switching models lies in the fact that the log-likelihood function does not have a global maximum (HAMILTON, 1991). Additionally, there are often several local maxima that yield similar values for the log-likelihood function, but different parameter estimates. Owing to these problems, we used different initial values and we chose the model with the largest log-likelihood function value. When we estimated the Markov-switching specification using variations in the Selic rate as monetary policy measure, we noted that the local maximum with the largest log-likelihood function value was characterized by a transition probability  $p$  close to zero and by filtered probabilities of recession (regime 0) that captured only outliers in the data. Since the models with these characteristics imply that only one state practically persists throughout the sample period, we consider an alternative local maximum whose estimate of the parameter vector allows assessing the periods of recession and expansion more properly.

##### 4.1 Estimates for the MS Model with VAR Shocks

Initially, model (1) was estimated by taking into account positive and negative monetary shocks obtained from the VAR model. We refer to this model as MS(2)-

ARX1(p).<sup>9</sup> We use a set of LR tests to determine the autoregressive order of the model. The results indicate that the optimal number of lags is  $p=7$ .

To check whether the selection of the MS(2)-ARX1(7) model is appropriate, we used two strategies. First, we used the AIC and MSC criteria and the LR test proposed by Ang and Bekaert (1998) in order to verify whether the Markov-switching model is more suitable than the model with constant coefficients. Second, we performed Ljung-Box (LB) and ARCH tests to check the absence of serial correlation and autoregressive conditional heteroskedasticity in the standardized prediction errors in the MS(2)-ARX1(7) model. The MSC and the LR tests carried out for a significance level of 2% suggest that the two-regime model represents the data more appropriately than the linear model. The specification test results suggest absence of significant autocorrelation and of ARCH effects in the prediction errors of the model.

Table 2 shows the maximum likelihood estimates for the parameters of the MS(2)-ARX1(7) model.<sup>10</sup> The estimated values for  $\mu_{st}$  indicate that the economy has a mean growth rate of -1.17% per month (-14.04% per annum) in recessions (state 0) and of 0.728% per month (8.74% per annum) in expansions (state 1). The probabilities of remaining in each regime are estimated at 0.735 for state 0 and at 0.946 for state 1. This implies that recessions last on average 3.8 months, whereas periods of expansion last on average 18.64 months. All of these results indicate that the estimated Markov-switching model captures asymmetries in the business cycles, characterizing recessions as short periods of sudden drops in output and expansions as periods of gradual and lasting increase in output.

9 MS(2)-ARX1(p) denotes a two-regime Markov-switching model and p lags of the endogenous variable and of the exogenous regressors (positive and negative monetary shocks) obtained from a VAR.

10 In order to reduce the table size, we omitted the estimates for coefficients  $\beta$ 's and  $\sigma$ . Results can be provided upon request.

TABLE 2 – PARAMETER ESTIMATION FOR THE MS(2)-ARX1(7) MODEL

Parameter	Regime 0		Regime 1	
	Estimate	Standard errors	Estimate	Standard errors
$\mu_{S_t}$	-1.1738*	0.3164	0.7280*	0.1523
$\gamma_{S_{t-1},1}^-$	-2.1926 <sup>n.s</sup>	1.5060	-5.2377*	0.8658
$\gamma_{S_{t-2},2}^-$	3.3960***	1.7855	-1.0456 <sup>n.s</sup>	0.9335
$\gamma_{S_{t-3},3}^-$	-4.8438*	1.7631	0.2106 <sup>n.s</sup>	0.9238
$\gamma_{S_{t-4},4}^-$	3.0367***	1.6720	-2.4248*	0.8434
$\gamma_{S_{t-5},5}^-$	-5.0492*	1.7717	-0.5419 <sup>n.s</sup>	0.8532
$\gamma_{S_{t-6},6}^-$	2.6511 <sup>n.s</sup>	1.8676	-0.6683 <sup>n.s</sup>	0.8427
$\gamma_{S_{t-7},7}^-$	2.1596 <sup>n.s</sup>	1.8285	-2.3243*	0.8598
$\gamma_{S_{t-1},1}^+$	-0.0909 <sup>n.s</sup>	1.2257	-0.3766 <sup>n.s</sup>	1.5483
$\gamma_{S_{t-2},2}^+$	-7.0426*	2.6244	-1.4112 <sup>n.s</sup>	1.5126
$\gamma_{S_{t-3},3}^+$	0.3926 <sup>n.s</sup>	2.8931	-3.8426*	1.4271
$\gamma_{S_{t-4},4}^+$	-6.8694*	2.2504	0.9764 <sup>n.s</sup>	1.5554
$\gamma_{S_{t-5},5}^+$	-4.2807***	2.5595	-2.1910 <sup>n.s</sup>	1.4725
$\gamma_{S_{t-6},6}^+$	4.4145***	2.3742	0.2470 <sup>n.s</sup>	1.4213
$\gamma_{S_{t-7},7}^+$	3.9618***	2.0644	3.1888**	1.5390
p/q	0.7351*	0.1019	0.9463*	0.0257
$\Sigma\gamma^-$	-0.84	-	-12.03	-
$\Sigma\gamma^+$	-9.51	-	-3.41	-
Log-likelihood	-213.85			

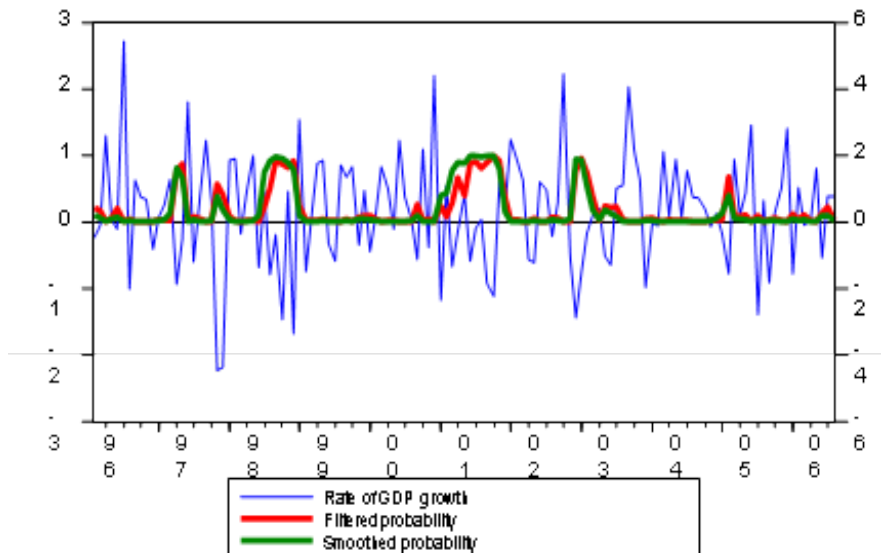
Note: \* Significant at 1%. \*\* Significant at 5%. \*\*\* Significant at 10%. <sup>n.s</sup> Not significant.

The behavior of the growth rate of output and of the probabilities of recession is shown in Figure 1. The filtered probability of recession can be understood as an optimal inference on this regime at time t using the information available up to time t, whereas the smoothed probability of recession is concerned with the inference on this state using all the available information.<sup>11</sup> By looking at Figure 1, one can perceive that the time paths of the filtered and smoothed probabilities are quite similar, suggesting that the estimates of recession periods can be obtained through recursive one-step ahead estimates (filtered probabilities) or by using all the available

11 The filtered probability of recession was obtained through Hamilton's filter (HAMILTON, 1989). The smoothed probability of recession was obtained through Kim's algorithm (KIM, 1994).

information (smoothed probabilities). The specific dating of recession periods can be obtained by the rule that connects observation  $t$  to state 0 if the smoothed probability of this regime is greater than 0.5 (HAMILTON, 1989). The application of this rule to the estimated model allows making a distinction between two periods of longer recessions (1998:7-1998:12 and 2001:3-2001:11) and two recessions with a duration no longer than three months (1997:4-1997:5 and 2002:12-2003:2). These results seem to be consistent with those obtained by Céspedes *et al.* (2006).<sup>12</sup>

FIGURE 1 – BEHAVIOR OF THE GDP GROWTH RATE AND OF FILTERED AND SMOOTHED PROBABILITIES OF RECESSION FOR THE MS(2)-ARX1(7) MODEL



The effects of monetary shocks on output are measured by the sum of coefficients of each type of shock for each regime ( $\sum_i \gamma_{0,i}^j$  and  $\sum_i \gamma_{1,i}^j$ , for  $j = -, +$ ). The results shown in Table 2 suggest that an unexpected increase in the Selic rate lowers the output in both states of the business cycle, whereas an unexpected decrease in the Selic rate increases the aggregate output. Moreover, output appears to be more sensitive to negative monetary shocks during an expansion and less sensitive to them in a recession.

12 These authors use quarterly data and estimate recession and expansion periods for Brazil using Bry-Boschan algorithm and Markov-switching models.

To determine the statistical significance of the effects of different monetary shocks, we performed a set of Wald tests and imposed different restrictions on the estimated parameters. The results of these tests are shown on the first eight lines of Table 3. On the first four lines, we test the null hypothesis that the coefficients related to a given monetary shock in a given regime are jointly equal to zero. In all cases, this null hypothesis is rejected at a 1% significance level. The subsequent four lines test whether the sum of the coefficients of each shock is equal to zero. Given a significance level of 10%, we can observe that this hypothesis is rejected only for the negative shocks in the state of expansion and positive shocks in the state of recession. This indicates that the effects of the procyclical monetary shocks on the output are neutral.

TABLE 3 – WALD TESTS FOR THE MS(2)-ARX1(7) MODEL

Null hypothesis	Value of $\chi^2$ statistic	No. of restrictions	P-value
$\gamma_{0,i}^- = 0, \forall i$	20.92	7	0.0039
$\gamma_{1,i}^- = 0, \forall i$	52.42	7	0.0000
$\gamma_{0,i}^+ = 0, \forall i$	23.44	7	0.0014
$\gamma_{1,i}^+ = 0, \forall i$	19.42	7	0.0070
$\Sigma\gamma_{0,i}^- = 0$	0.08	1	0.7773
$\Sigma\gamma_{1,i}^- = 0$	22.04	1	0.0000
$\Sigma\gamma_{0,i}^+ = 0$	2.80	1	0.0943
$\Sigma\gamma_{1,i}^+ = 0$	0.98	1	0.3221
$\Sigma\gamma_{0,i}^- = \Sigma\gamma_{0,i}^+$	2.17	1	0.1407
$\Sigma\gamma_{1,i}^- = \Sigma\gamma_{1,i}^+$	3.60	1	0.0578
$\Sigma\gamma_{0,i}^+ = \Sigma\gamma_{1,i}^-$	0.17	1	0.6801
$\Sigma\gamma_{0,i}^- = \Sigma\gamma_{1,i}^-$	8.26	1	0.0041
$\Sigma\gamma_{0,i}^+ = \Sigma\gamma_{1,i}^+$	1.19	1	0.2753

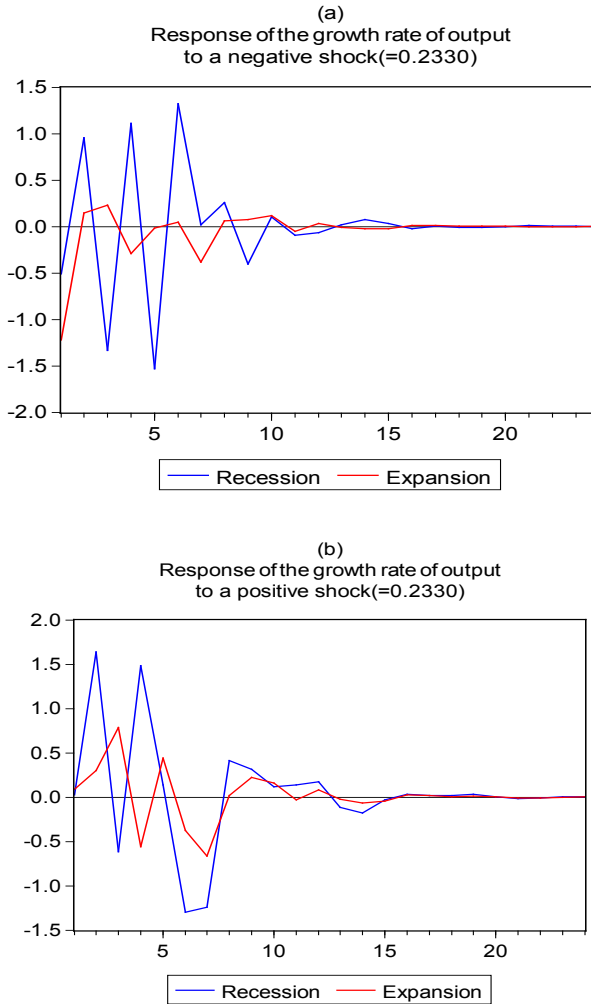
Now we check whether the effects of different monetary policy actions are asymmetric. To do that, we test the null hypotheses of symmetry explained in section 2.2. In Table 3, we highlight several results. First, the null hypothesis of symmetry between the effects of positive and negative shocks is not rejected at a 10% significance level in state 0, but it is rejected (in favor of  $\Sigma\gamma_{1,i}^- = -12.03 > \Sigma\gamma_{1,i}^+ = -3.41$ ) at a

6% significance level in state 1. This suggests that the real effects of negative monetary shocks are larger than the effects of positive shocks only in the expansion phase of the business cycle. Secondly, the non-rejection of the null hypothesis  $\Sigma\gamma_{0,i}^+ = \Sigma\gamma_{1,i}^-$  shows that the impact on the output of a given unexpected decrease in the Selic rate in a recession is equivalent to that of an increase during an expansion. This indicates that the real effects of a countercyclical monetary policy do not depend on the prevailing state of the business cycle when monetary shock occurs. Thirdly, the Wald test result strongly rejects the null hypothesis that the real effects of negative shocks are the same between the Markov states in favor of a larger effect of these shocks in the expansion state ( $\Sigma\gamma_{1,i}^- = -12.84 > \Sigma\gamma_{0,i}^- = -0.86$ ). Finally, we cannot reject the null hypothesis of symmetry of real effects of positive monetary shocks between the states of the business cycle.

The differences in the real effects of the monetary policy are shown in Figure 2. In Panel a, we show the paths of the growth rate of output in a recession and in an expansion in response to a negative shock (or to an unexpected increase in the Selic rate) equal to 0.233 percentage points implemented at  $t=0$ .<sup>13</sup> In Panel b, the responses of the growth rate of output to a positive shock of -0.233 percentage points are presented for the two Markov regimes. Initially, we can perceive that the oscillation in output in response to different types of monetary shocks is a common characteristic in both panels. This probably results from the high noise level in the monthly series of the industrial production growth rate. When we compare the paths of output across the different regimes, we also note that the response of output has a greater variability in the recession phase of the business cycle for any of the types of shocks considered.

13 The value 0.2330 is the estimate for the standard deviation of the structural monetary shock series  $u_t$  which was obtained from the VAR.

FIGURE 2 – STATE-DEPENDENT EFFECTS OF A MONETARY SHOCK IN THE VAR MODEL



With regard to the impact of specific monetary shocks, Figure 4 shows that the effect of an unexpected increase in the Selic rate is the reduction in output at  $t=1$ , whereas an unexpected decrease in this rate increases output level one month after the shock. The largest decrease in output in response to a negative shock occurs in the fifth month if the economy is in a recession and in the first month if it is in an expansion. With respect to a positive monetary shock, the increase in output rea-



ches its maximum in the second and third months during recession and expansion, respectively.

Finally, one can observe that the response of the growth rate of output accumulated in the 24 months after a negative (positive) shock is equal to -0.09% (1.02%) in the recession regime and to -1.3% (0.37%) in the expansion regime. The differences in these values suggest that: i) in the expansion regime, the negative shocks affect output more strongly than do positive shocks; ii) the real effect of a negative shock is larger during an expansion than in a recession; iii) in the recession regime, the real effect of a given positive shock outperforms, in absolute value, the effect of a negative shock; iv) the real effect of a positive shock is larger during an expansion; and v) the real effect of an unexpected increase in the Selic rate is larger than that of an unexpected decrease in this rate during recession. It is important that results iii through v be taken with caution, since the Wald tests did not reject the null hypotheses of symmetry for these cases.

#### *4.2 Checking the Robustness of Results*

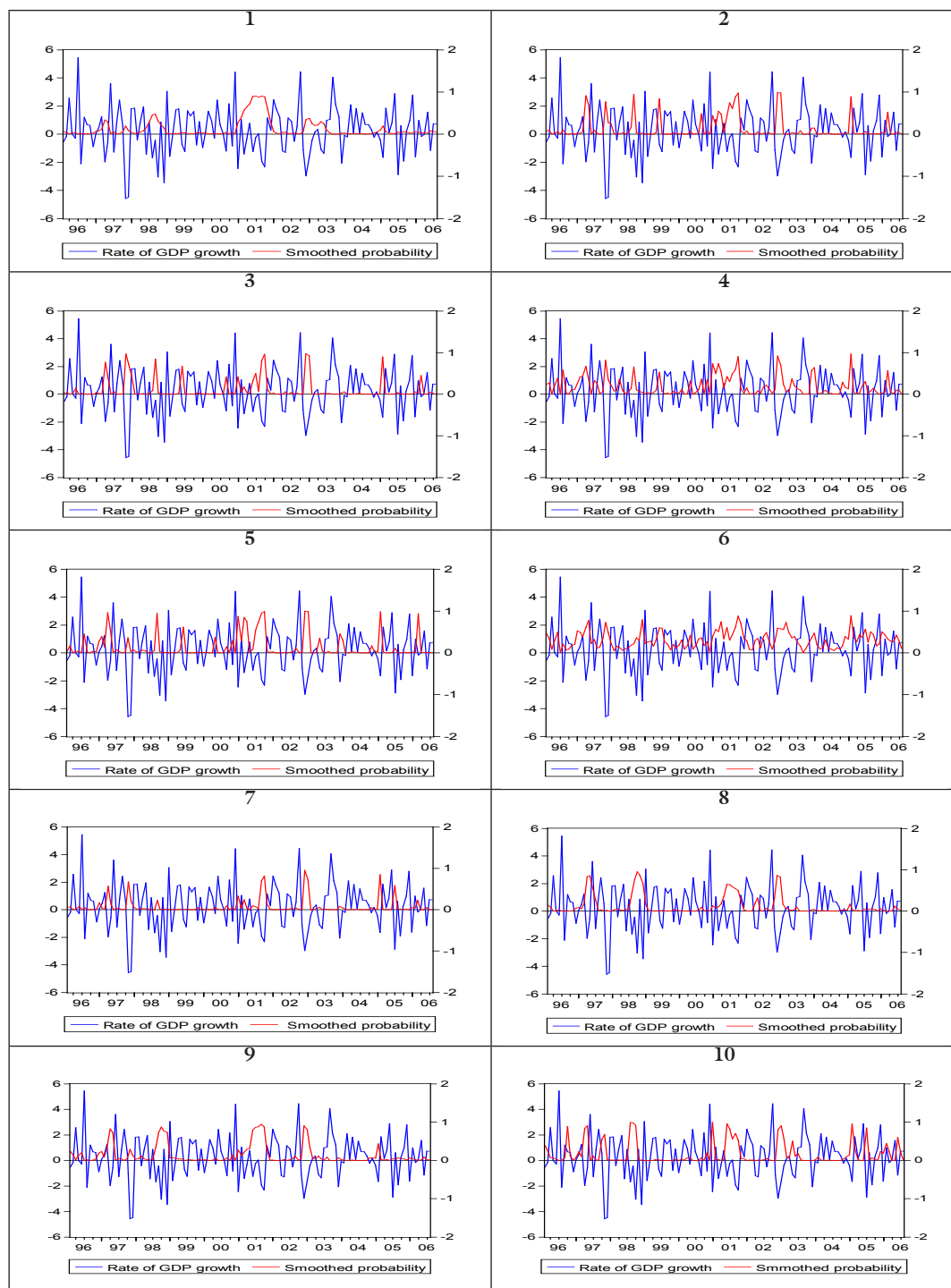
To check the robustness of the results above, we estimated 10 specifications of the Markov-switching model (1). In specifications 1 through 9, structural monetary shocks were obtained from the estimation of VAR models, described in Table 1. In specification 10, monetary policy actions were gauged by the variation in the Selic rate. Table 4 summarizes the results obtained showing the estimates of the mean growth rates, of transition probabilities and of the effects of each monetary policy action, as well as the p-values for the Wald tests.

TABLE 4 – MARKOV-SWITCHING MODEL ESTIMATION RESULTS

Parameters	Specifications									
	1	2	3	4	5	6	7	8	9	10
$\mu_0$	-0.69 (0.41)	-1.47 (0.35)	-1.96 (0.48)	-0.55 (0.30)	-1.38 (0.03)	-0.16 (0.24)	-1.72 (0.57)	-1.20 (0.46)	-0.96 (0.40)	-1.25 (0.21)
$\mu_1$	0.45 (0.13)	0.83 (0.16)	0.59 (0.10)	1.09 (0.24)	1.05 (0.19)	0.73 (0.17)	0.78 (0.21)	0.47 (0.16)	0.84 (0.14)	0.86 (0.09)
$p$	0.72 (0.16)	0.36 (0.13)	0.24 (0.16)	0.31 (0.11)	0.34 (0.11)	0.50 (0.06)	0.19 (0.15)	0.61 (0.13)	0.58 (0.13)	0.40 (0.03)
$q$	0.96 (0.03)	0.91 (0.03)	0.92 (0.03)	0.84 (0.05)	0.88 (0.03)	0.76 (0.07)	0.93 (0.04)	0.95 (0.02)	0.94 (0.03)	0.89 (0.11)
$\Sigma\gamma_0^-$	-7.24	-5.49	-4.91	-0.04	-0.85	-11.8	-2.78	-12.5	-6.07	-3.94
$\Sigma\gamma_0^+$	-12.4	-4.73	-17.2	3.46	1.44	-1.64	-7.10	-6.00	-4.11	-23.1
$\Sigma\gamma_1^-$	-10.0	-12.1	-11.3	-7.77	-10.0	3.17	-6.72	-3.17	-11.4	-16.7
$\Sigma\gamma_1^+$	-6.14	-2.84	-5.34	2.87	-0.13	4.53	3.70	-2.30	5.46	-0.87
Log-likelihood	-218.2	-209.3	-214.0	-210.9	-211.4	-214.3	-215.2	-218.1	-218.0	-201.7
Null hypothesis	Wald tests (p-value)									
$\Sigma\gamma_{0,i}^- = 0$	0.157	0.169	0.160	0.992	0.812	0.000	0.565	0.251	0.608	0.084
$\Sigma\gamma_{1,i}^- = 0$	0.000	0.000	0.000	0.002	0.000	0.375	0.049	0.217	0.001	0.000
$\Sigma\gamma_{0,i}^+ = 0$	0.334	0.500	0.137	0.485	0.751	0.803	0.666	0.340	0.472	0.001
$\Sigma\gamma_{1,i}^+ = 0$	0.103	0.309	0.082	0.376	0.965	0.179	0.366	0.576	0.150	0.610
$\Sigma\gamma_{0,i}^- = \Sigma\gamma_{0,i}^+$	0.662	0.916	0.299	0.591	0.674	0.138	0.790	0.535	0.872	0.003
$\Sigma\gamma_{1,i}^- = \Sigma\gamma_{1,i}^+$	0.280	0.016	0.062	0.009	0.010	0.809	0.082	0.864	0.005	0.000
$\Sigma\gamma_{0,i}^+ = \Sigma\gamma_{1,i}^-$	0.864	0.317	0.585	0.053	0.021	0.545	0.982	0.647	0.240	0.354
$\Sigma\gamma_{0,i}^- = \Sigma\gamma_{1,i}^-$	0.647	0.127	0.110	0.068	0.020	0.003	0.489	0.413	0.651	0.000
$\Sigma\gamma_{0,i}^+ = \Sigma\gamma_{1,i}^+$	0.633	0.783	0.287	0.912	0.746	0.305	0.512	0.630	0.181	0.002

Note that, in all estimated models, state 0 is characterized by a mean negative growth rate of output, whereas state 1 has a mean positive growth rate. Again, this allows classifying regimes 0 and 1 as recession and expansion. The estimated transition matrices show that the probability of remaining in the expansion state is always larger than doing so in the recession state. In addition, probability  $p$  estimates were equal to or less than 0.5 for seven of the estimated specifications. When compared to the model in the previous section, Figure 3 suggests that this smaller persistence and duration of state 0 observed herein results from the adjustments of the estimated models to sudden and transient decreases in output.

FIGURE 3 – BEHAVIOR OF THE GDP GROWTH RATE AND SMOOTHED PROBABILITIES OF RECESSION FOR THE MS MODELS



In regard to the real effects of structural monetary shocks, Table 4 shows that, in general, the estimates of the sum of coefficients associated with each type of shock have the expected sign. For specifications in which the effects of monetary shocks differ from those theoretically predicted, the Wald tests do not reject the null hypothesis that these effects are statistically equal to zero. Furthermore, note that null hypotheses  $H_0 : \Sigma\gamma_{0,t}^- = 0$  and  $H_0 : \Sigma\gamma_{1,t}^+ = 0$  are not rejected in most of the estimated specifications. This corroborates the result obtained in the previous section, indicating the neutrality of the real effects of procyclical monetary shocks. As to countercyclical monetary shocks, the Wald tests show that, in general, we can reject the null hypothesis of neutrality of negative shocks, but this is not true for positive shocks. The result of the neutrality of positive monetary shocks differs from that one obtained by the model in the previous section and this is observed in all Markov-switching specifications using structural monetary shocks.

When the Selic rate is used to measure monetary policy actions, we can observe that the sum of the coefficients related to each “shock” suggests that a positive variation in the Selic rate reduces output, whereas a negative variation increases output. The Wald test results support the non-neutrality of the effects of positive variations in the Selic rate in both states of the business cycle. As far as negative variations in the Selic rate are concerned, we found evidence that the sum of the coefficients related to this policy action is statistically different from zero only in the recession state.

The set of tests of hypotheses on the symmetry of the real effects of different types of monetary policy actions yields four results. First, we found strong evidence of asymmetry in the real effects of a contractionary and expansionary monetary policy in the expansion regime in six specifications of the Markov-switching model with structural monetary shocks, as well as in the specification with variation in the Selic rate. Secondly, for eight out of 10 specifications, we could not find evidence of asymmetry between the effects of countercyclical monetary shocks. Thirdly, in six specifications, the null hypothesis of symmetry between the real effects of negative monetary shocks in regimes 0 and 1 was not rejected at a significance level of 10%. Finally, we found out that the evidence of asymmetry between the real effects of positive and negative shocks in the recession state and between the effects of positive shocks in the different Markov states could only be confirmed when we used the variation in the Selic rate as a monetary policy instrument.

## 5 CONCLUSIONS

In this paper, we sought to empirically investigate whether the real effects of monetary policy in Brazil are asymmetric in terms of the direction of the monetary policy action and of the phase of the business cycle in place at the time at which the policy was implemented. The empirical strategy we used consisted of a two-step estimation procedure. First, we measured monetary policy actions based on the innovations of a vector autoregressive model in which output, inflation rate and Selic rate are included as system variables. After that, we estimated an extended specification of the Markov-switching model proposed by Hamilton (1989), which allows positive and negative monetary shocks to asymmetrically affect the growth rate of output during expansions and recessions. To check the robustness of results, we estimated the Markov-switching model using structural monetary shocks obtained from the estimation of different VAR model specifications and the Selic rate variation as a monetary policy instrument.

We assessed whether the effects of the monetary policy on output are asymmetric by using the Wald statistics to test a set of null hypotheses of symmetry in the effects of different shocks. For most of the estimated specifications, we found evidence of asymmetry between the real effects of contractionary and expansionary monetary policies in the expansion regime. This result is consistent with the existence of a convex aggregate supply curve resulting from downward price and wage rigidity. With regard to the recession state, there was no evidence of asymmetry between the effects of positive and negative monetary shocks. A possible explanation is that recession periods were frequently adjusted for months of sudden and transient decreases in output (e.g., 1998:09-10, 2001:09-10 and 2002:12-2003:1), which proves a major obstacle to the assessment and differentiation of the real effects of positive and negative monetary shocks in this Markov state.

When we checked for the existence of asymmetry related to the phase of the business cycle, we did not find compelling evidence that monetary shocks affect more severely an economy in recession than one in expansion. For positive monetary shocks, the null hypothesis that the real effects are the same in recession and expansion states was not rejected for all Markov-switching models that used structural monetary shocks obtained from VAR models. As to negative monetary shocks, asymmetry between recession and expansion could be observed in only five of the 11 models estimated. These results differ from those found by Garcia and Schaller (2002), Dolado and Maria-Dolores (2001, 2006) and Peersman and Smets (2001) for developed countries and may indicate a relatively low importance of the credit channel in the monetary policy transmission mechanism in Brazil. Finally, in nine out of 11 estimated specifications, no evidence could be found about asymmetries between

the effects of a contractionary monetary policy implemented during an expansion and those of an expansionary policy implemented during a recession.

## REFERENCES

- ANG, A.; BEKAERT, G. *Regime switches in interest rates*. Cambridge: National Bureau of Economic Research, 1998. (Working Paper, 6508).
- BALL, L.; ROMER, D. Are prices too sticky? *The Quarterly Journal of Economics*, v. 104, n.3, 1989.
- BALL, L.; MANKIW, N. G. Asymmetric price adjustment and economic fluctuations. *The Economic Journal*, v. 104, n. 423, 1994.
- BERNANKE, B.; GERTLER, M. Agency cost, net worth, collateral, and business fluctuations. *American Economic Review*, v. 79, n. 1, 1989.
- \_\_\_\_\_. Inside the black box: the credit channel of monetary policy transmission. *The Journal of Economic Perspectives*, v. 9, n. 4, 1995.
- BERNANKE, B.; MIHOV, I. What does the Bundesbank target? *European Economic Review*, v. 41, n. 6, 1997.
- \_\_\_\_\_. Measuring monetary policy. *The Quarterly Journal of Economics*, v. 113, n.3, 1998.
- CABALLERO, R. J.; ENGEL, E.M.R.A. Heterogeneity and output fluctuations in a dynamic menu-cost economy. *Review of Economic Studies*, v. 60, n. 202, 1993.
- CÉSPEDES, B. J. V. *Monetary policy, inflation and the level of economic activity in Brazil after the real plan: stylized facts from SVAR models*. Rio de Janeiro: IPEA, 2005. (Discussion Paper, 1101).
- \_\_\_\_\_. *et al.* Forecasting Brazilian output and its turning points in the presence of breaks: a comparison of linear and nonlinear models. *Estudos Econômicos*, v. 36, n. 1, 2006.
- COVER, J. P. Asymmetric effects of positive and negative money-supply shocks. *The Quarterly Journal of Economics*, v. 107, n. 4, 1992.
- DE LONG, J. B.; SUMMERS, L. H. How does macroeconomic policy affect output? *Brookings Papers on Economic Activity*, v. 1988, n. 2, 1988.
- DOAN, T. *RATS user's manual*. Evanston: Estima, 1992.
- DOLADO, J.J.; MARIA-DOLORES, R. An empirical study of the cyclical effects of monetary policy in Spain. *Investigaciones Económicas*, v. 25, n. 1, 2001.
- \_\_\_\_\_. State asymmetries in the effects of monetary policy shocks on output: some the new evidence of the Euro-Area. In: MILAS *et al.* *Nonlinear time series analysis of business cycles*. Amsterdam: Elsevier, 2006.

- DRIFFILL, J.; SOLA, M. Intrinsic bubbles and regime-switching. *Journal of Monetary Economics*, v. 42, n. 2, 1998.
- FERNANDES, M.; TORO, J. Mecanismo de transmissão monetária na economia brasileira pós-plano Real. *Revista Brasileira de Economia*, v.59, n. 1, 2005.
- GARCIA, R.; SCHALLER, H. Are the effects of monetary policy asymmetric? *Economic Inquiry*, v. 40, n. 1, 2002.
- GERTLER, M.; HUBBARD, R. G. *Financial factors in business fluctuations*. Cambridge: National Bureau of Economic Research, 1988. (Working Paper, 2758).
- GILL, P. E. *et al. Practical optimization*. London: Academic Press, 1981.
- GOODWIN, T. H. Business-cycle analysis with a Markov-switching model. *Journal of Business and Economic Statistics*, v. 11, n. 3, 1993.
- HAMILTON, J. A new approach to the economic analysis of nonstationary time series and the business cycle. *Econometrica*, v. 57, n. 2, 1989.
- \_\_\_\_\_. A quasi-Bayesian approach to estimating parameters for mixtures of normal distributions. *Journal of Business and Economic Statistics*, v. 9, n.1,1991.
- \_\_\_\_\_. *Time series analysis*. Princeton: Princeton University Press, 1994.
- HANSEN, B. E. The likelihood ratio test under nonstandard conditions: testing the Markov switching model of GNP. *Journal of Applied Econometrics*, v. 7, 1992.
- HENDRY, D. F. *Dynamic econometrics*. Oxford: Oxford University Press, 1996.
- KAMINSKY, G. L. *et al. When it rains, it pours: procyclical capital flows and macroeconomic policies*. Cambridge: National Bureau of Economic Research, 2004. (Working Paper, 10780).
- KARRAS, G.; STOKES, H. H. Why are the effects of money-supply shocks asymmetric? Evidence from prices, consumption, and investment. *Journal of Macroeconomics*, v. 21, n. 4, 1999.
- KAUFMANN, S. Is there an asymmetric effect of monetary policy over time? A Bayesian analysis using Austrian data. *Empirical Economics*, v. 27, n.2, 2002.
- KIM, C-J. Dynamic linear models with Markov-switching. *Journal of Econometrics*, v. 60, n. 1-2, 1994.
- \_\_\_\_\_. *et al.* Is there a positive relationship between stock market volatility and the equity premium? *Journal of Money, Credit, and Banking*, v. 36, n. 3, 2004.
- LEMGRUBER, A. C. Expectativas racionais e o dilema produto real/inflação no Brasil. *Revista Brasileira de Economia*, v. 34, n. 4, 1980.
- MAHEU, J. M.; McCURDY, T. H. Identifying bull and bear markets in stock returns. *Journal of Business and Economics Statistics*, v. 18, n. 1, 2000.
- MINELLA, A. Monetary policy and inflation in Brazil (1975-2000): a VAR estimation. *Revista Brasileira de Economia*, v. 57, n. 3, 2003.



- MOREIRA, A. *et al.* *Os impactos das políticas monetária e cambial no Brasil pós-Plano Real*. Rio de Janeiro: IPEA, 1998. (Texto para Discussão, 579).
- PAGAN, A. Econometric issues in the analysis of regressions with generated regressors. *International Economic Review*, v. 25, n. 1, 1984.
- PEERSMAN, G.; SMETS, F. *Are the effects of monetary policy in the Euro area greater in recessions than in booms?* Frankfurt: European Central Bank, 2001. (Working Paper, 52).
- PSARADAKIS, Z; SPAGNOLO, N. On the determination of the number of regimes in Markov switching autoregressive models. *Journal of Time Series Analysis*, v. 24, n. 2, 2003.
- RABANAL, P., SCHWARTZ, G. Testing the effectiveness of the overnight interest rate as a monetary policy instrument. *Brazil: selected issues and statistical appendix*. Washington D.C.: International Monetary Fund, 2001. (Country Report, 01/10).
- RAVN; M. O.; SOLA, M. Asymmetric effects of monetary policy in the United States. *Review of Federal Reserve Bank of ST. Louis*, v. 86, n. 5, 2004.
- RHEE, W.; RICH, R. W. Inflation and asymmetric effects of money on output fluctuations. *Journal of Macroeconomics*, v. 17, n. 4, 1995.
- SIMS, C. Macroeconomics and reality. *Econometrica*, v. 48, n. 1, 1980.
- \_\_\_\_\_. *et al.* Inference in linear time-series models with some unit roots. *Econometrica*, v. 58, n. 1, p. 113-144, 1990.
- SMITH, A. *et al.* Markov-switching model selection using Kullback–Leibler divergence. *Journal of Econometrics*, v. 134, n. 2, 2006.
- TSIDDON, D. The (mis) behaviour of the aggregate price level. *Review of Economic Studies*, v. 60, n. 4, 1993.